



Stunning luxury apartment

Flat 2, 2 Driffield Terrace, York YO24 1EJ

Leasehold



Open plan living and dining room • kitchen • 2 bedrooms • bathroom • w.c.

Local information

Driffild Terrace is an impressive address situated just off The Mount which leads out of the city centre past the racecourse. It is convenient for both the city centre, the train station (0.7 miles), and the historic city walls are just half a mile distant. There are restaurants, a convenience store and Everyman Cinema within a short distance (0.5 mile).

York is a popular city with excellent rail links including services to London, Manchester and Edinburgh.

There are regular services to Kings Cross in under 2 hours. The city centre has a diverse selection of shops and restaurants. In addition there are several local primary and secondary schools including All Saints (Ofsted Outstanding, June 2016), and private schools including The Mount, St Peters and Bootham.

About this property

Apartment 2 is one of only four apartments meticulously restored in this wonderful Grade II listed house.

This raised ground floor apartment offers extensive and well planned accommodation, with a good balance of formal and informal living space and an abundance of period features.

The living and dining area include an impressively proportioned living room with a wonderful bay window and contemporary kitchen with quality appliances

which flows into the living room, ideal for entertaining.

The two bedrooms are fabulous with the high ceilings giving a real sense of space and scale.

Tenure

Leasehold

Local Authority

City of York

EPC rating = D

Viewing

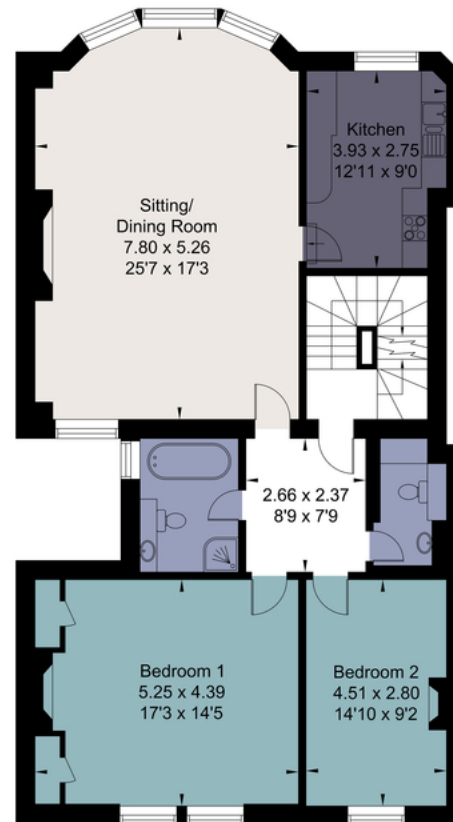
Strictly by appointment with Savills



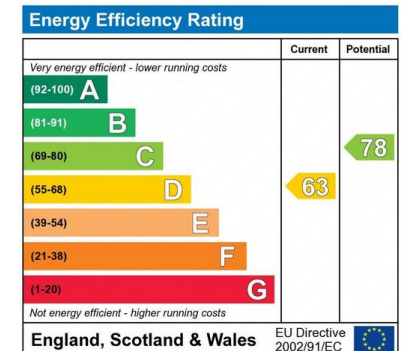


Flat 2, 2 Driffield Terrace

Gross internal area (approx) 107.14 sq m / 1153.24 sq ft
 Total 107.14 sq m / 1153.24 sq ft



For illustrative purposes only. Not to scale. Whilst every attempt was made to ensure the accuracy of the floor plan, all measurements are approximate and no responsibility is taken for any error.



Important notice: Savills, their clients and any joint agents give notice that 1: They are not authorised to make or give any representations or warranties in relation to the property either here or elsewhere, either on their own behalf or on behalf of their client or otherwise. They assume no responsibility for any statement that may be made in these particulars. These particulars do not form part of any offer or contract and must not be relied upon as statements or representations of fact. 2: Any areas, measurements or distances are approximate. The text, photographs and plans are for guidance only and are not necessarily comprehensive. It should not be assumed that the property has all necessary planning, building regulation or other consents and Savills have not tested any services, equipment or facilities. Purchasers must satisfy themselves by inspection or otherwise. 02023002 Job ID: 141479 User initials: JK