



Fantastic duplex penthouse with wonderful views

607 Westgate Apartments, Leeman Road, York YO26 4ZP

Leasehold



Entrance hall • Open plan kitchen, living and dining area
• master bedroom with en suite • second bedroom •
bathroom • roof terrace • 2 allocated parking space

Local information

Westgate Apartments is a sought-after development nestled between the River Ouse and the memorial gardens, just outside the historic walls of York centre, which provides the ultimate contemporary living experience.

The apartment building is set within easy reach of the city's attractions, shopping areas, restaurants, well renowned schools and two theatres. The York racecourse is about 1.8 miles distant.

York railway station, located close to the complex, offers regular services to major cities including Manchester, Edinburgh and London with some journeys taking less than 2 hours to Kings Cross.

About this property

607 Westgate is an impressive duplex penthouse occupying a superb position with views across the river, city, the bar walls and towards the Minster.

A concierge, parking, lifts, video entry system, CCTV cameras and underground storage for bicycles all provide functional luxury apartment living in this prestigious development.

The property has a good size entrance hall which leads to two sizeable bedrooms and a shower room. The master bedroom has a luxury en suite bathroom.

The second floor is accessed by a staircase to the superb open plan

kitchen, dining and living room with double doors leading out to the wonderful roof terrace, fantastic for modern day living and entertaining.

A wrap around terrace provides ample space for relaxing and enjoying the city views and the sun at different times of the day.

In addition the property has two secure parking spaces in the underground car park.

Please note all distances are approximate.

Tenure

Leasehold

Local Authority

City of York

EPC rating = C

Viewing

Strictly by appointment with Savills

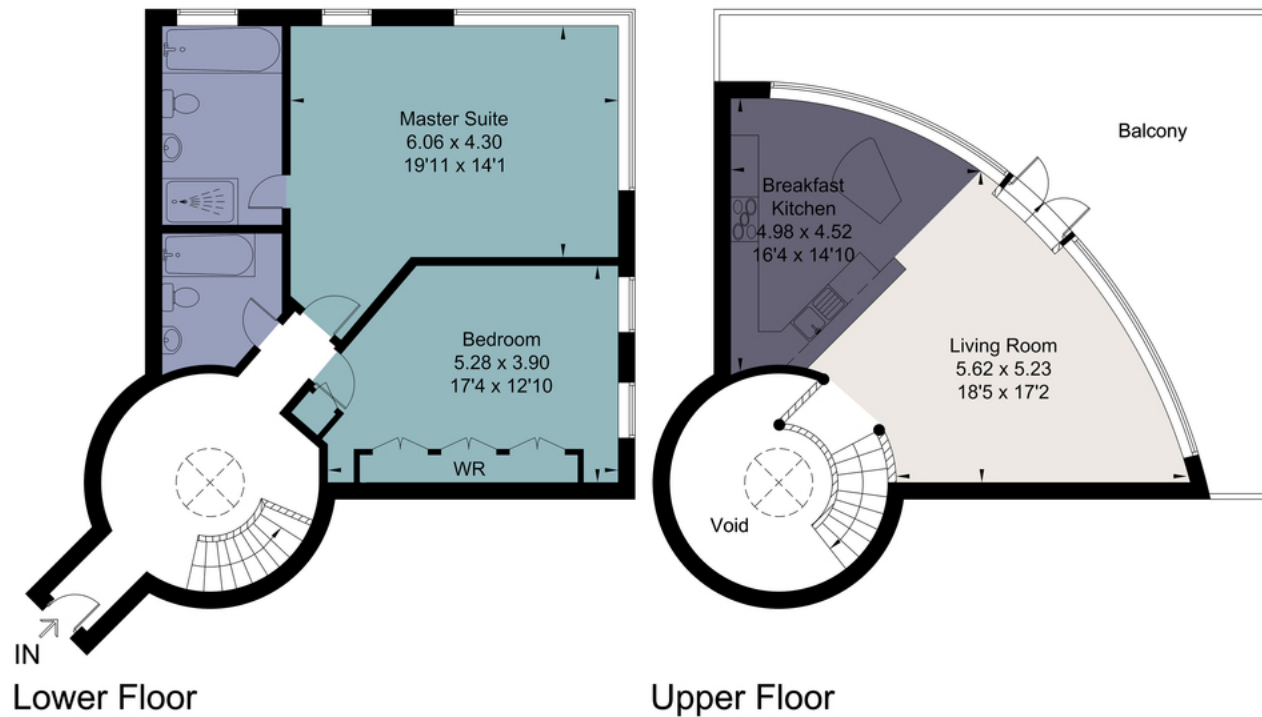




607 Westgate

Gross internal area (approx) 116.89 sq m / 1258.19 sq ft

Total 116.89 sq m / 1258.19 sq ft



For illustrative purposes only. Not to scale. Whilst every attempt was made to ensure the accuracy of the floor plan, all measurements are approximate and no responsibility is taken for any error.

Energy Efficiency Rating		Current	Potential
Very energy efficient - lower running costs			
(92-100) A			
(81-91) B			
(69-80) C			
(55-68) D		70	71
(39-54) E			
(21-38) F			
(1-20) G			
Not energy efficient - higher running costs			
England, Scotland & Wales		EU Directive 2002/91/EC	

Important notice: Savills, their clients and any joint agents give notice that 1: They are not authorised to make or give any representations or warranties in relation to the property either here or elsewhere, either on their own behalf or on behalf of their client or otherwise. They assume no responsibility for any statement that may be made in these particulars. These particulars do not form part of any offer or contract and must not be relied upon as statements or representations of fact. 2: Any areas, measurements or distances are approximate. The text, photographs and plans are for guidance only and are not necessarily comprehensive. It should not be assumed that the property has all necessary planning, building regulation or other consents and Savills have not tested any services, equipment or facilities. Purchasers must satisfy themselves by inspection or otherwise. 02023021 Job ID: 141489 User initials: JK