



## FANTASTIC RENOVATED PROPERTY

---

NEWINGTON GRANGE,  
149 NEWINGTON PLACE, MOUNT VALE, YORK, YO24 1DJ

Freehold

savills

## FANTASTIC RENOVATED PROPERTY

NEWINGTON GRANGE, 149  
NEWINGTON PLACE, MOUNT VALE,  
YORK, YO24 1DJ

**Freehold**

Family room ♦ sitting room ♦ kitchen dining room ♦ 5  
bedrooms, 2 en suite ♦ bathroom ♦ w.c. ♦ garden ♦ garage

### Situation

Mount Vale is a prestigious address offering convenient access to the Knavesmire, the city centre (city walls 0.6 mile) and the A64 (2.2 miles) in the opposite direction. The railway station is just 0.7 miles away, where there are regular mainline services across the country including to London Kings Cross in under 2 hours.

In the historic city centre there is excellent shopping, two theatres, galleries and many restaurants and bars. There are a number of well regarded schools, both private and state including St Peters, St Olaves, Bootham, All Saints R C Lower School ( outstanding July 2016), Scarcroft Primary (Outstanding March 2009 converted to an Academy 2016) and All Saints (outstanding July 2016).

### Description

Newington Grange is an elegant Regency townhouse recently restored and renovated within a prominent location near to York Racecourse and the city centre.

To the lower ground floor is a superb open plan contemporary kitchen dining room with French doors leading out to the garden. There are two impressive reception rooms on the ground floor with contemporary fireplaces.

To the first, second and third floors there are 5 bedrooms and three bathrooms. Of particular note is the stunning master bedroom suite comprising a walk in dressing room and modern bathroom beyond.

To the rear of the property is a walled garden with garage and parking in front.

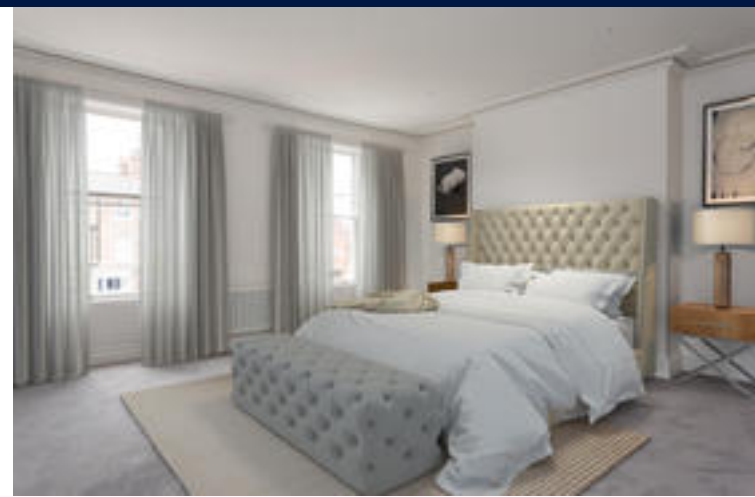
Photography from December 2018.

### Viewing:

Strictly by appointment with Savills



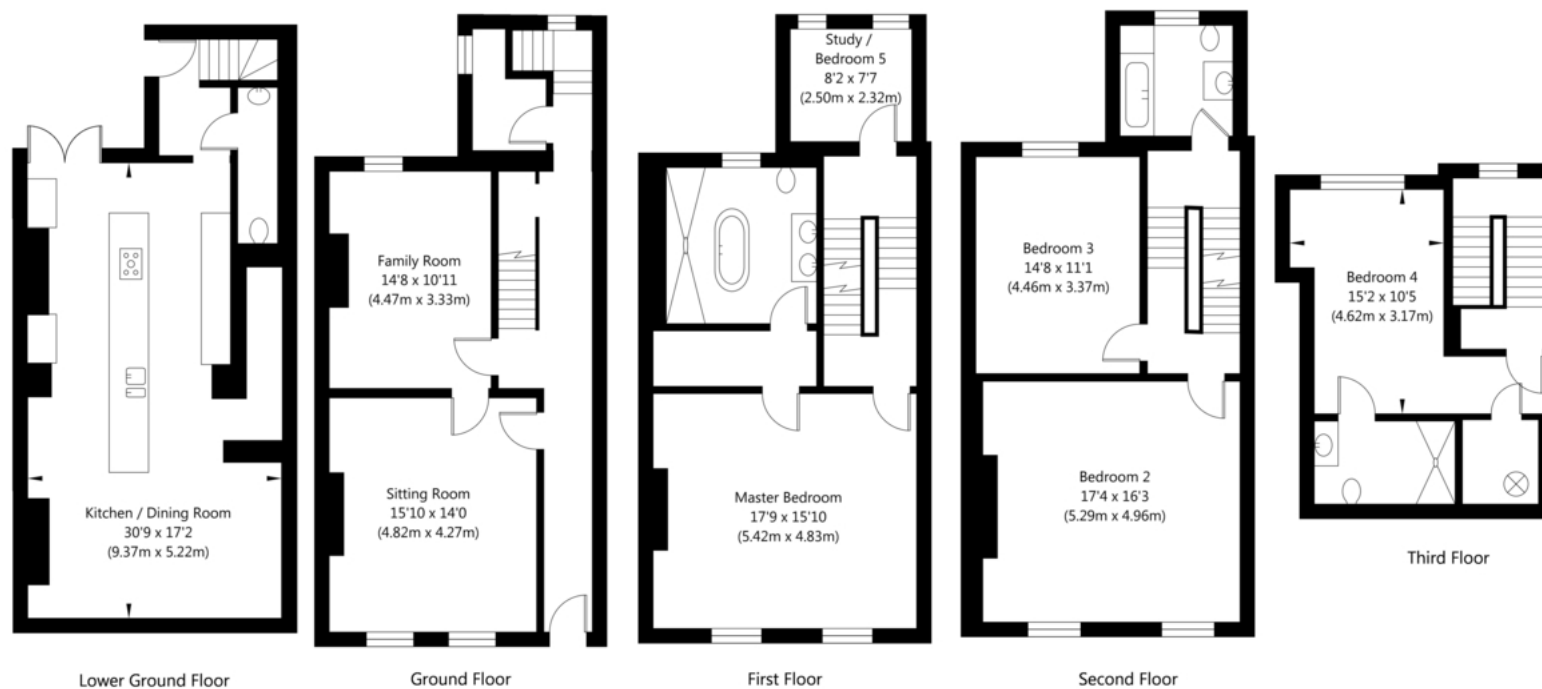




# 149, Newington Place, York, YO24 1DJ

APPROXIMATE GROSS INTERNAL FLOOR AREA

2793 SQ FT / 259.55 SQ M



NOT TO SCALE - FOR ILLUSTRATIVE PURPOSES ONLY  
 All Measurements and fixtures including doors and windows  
 are approximate and should be independently verified  
[www.exposurepropertymarketing.com](http://www.exposurepropertymarketing.com) © 2018



Savills York  
[york@savills.com](mailto:york@savills.com)  
 01904 617 820

[savills.co.uk](http://savills.co.uk)

Important notice: Savills, their clients and any joint agents give notice that 1: They are not authorised to make or give any representations or warranties in relation to the property either here or elsewhere, either on their own behalf or on behalf of their client or otherwise. They assume no responsibility for any statement that may be made in these particulars. These particulars do not form part of any offer or contract and must not be relied upon as statements or representations of fact. 2: Any areas, measurements or distances are approximate. The text, photographs and plans are for guidance only and are not necessarily comprehensive. It should not be assumed that the property has all necessary planning, building regulation or other consents and Savills have not tested any services, equipment or facilities. Purchasers must satisfy themselves by inspection or otherwise. 91026001 Job ID: 132594 User initials: SL