

A beautiful Grade II listed Victorian house

Victoria Square, London, SW1W

6 3 3

£4,200,000



A beautiful Grade II listed Victorian house

Victoria Square, London, SW1W

 6  3  3 | £4,200,000



About this property

A wonderful opportunity to buy an undermodernised Freehold, Grade II listed, Victorian house with many original details such as monkey tails and fireplaces. Victoria Square is just five minutes from Buckingham Palace and features a Reception Room, Kitchen, Dining Room, Drawing Room, six Bedrooms, three Bathrooms, a Terrace and storage. Victoria Square was designed by architect Sir Matthew Wyatt. It is one of the few houses left intact from the original project of Victoria Square.

Historically, the square has been home to many famous residents such as Ian Fleming (author of James Bond), John Ella (musician) and Mike Oldfield (musician and composer of Tubular Bells); it has also featured in the 1991 adaptation of *Howards End*. The family house of the late well-known designer James Irvine.



A beautiful Grade II listed Victorian house

Victoria Square, London, SW1W

6 3 3

£4,200,000



A beautiful Grade II listed Victorian house

Victoria Square, London, SW1W



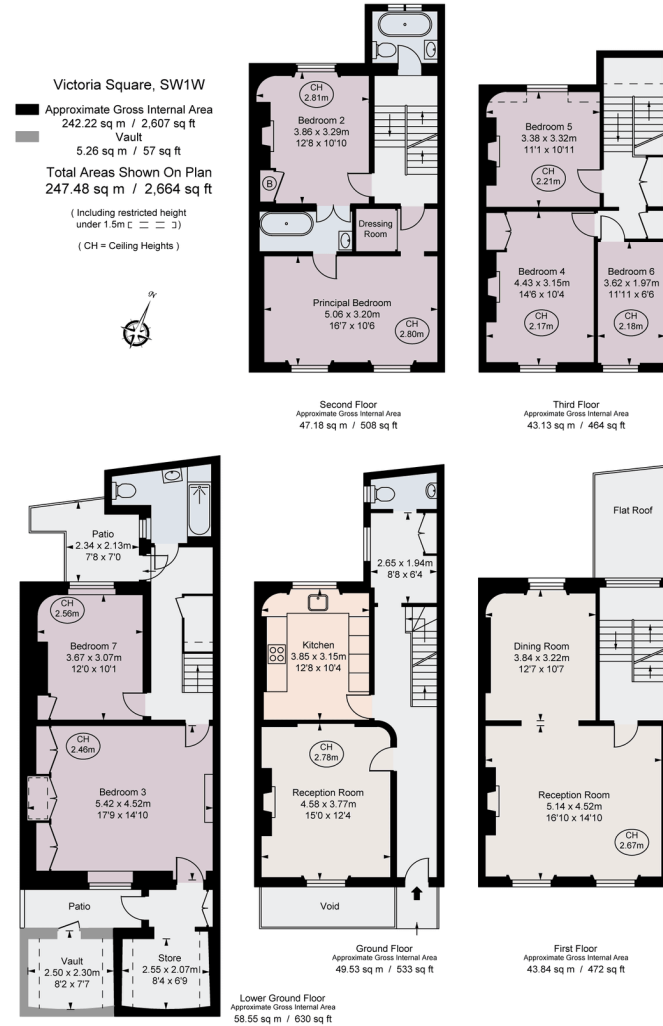
£4,200,000



Plans

Approx. gross internal floor area

2,612 sq ft



This plan is not to scale. It is for guidance and not for calculation purposes. All measurements and areas are approximate only, and have been prepared in accordance with the current edition of the RICS Code of Measuring Practice. © Taylor Wimpey

A beautiful Grade II listed Victorian house

Victoria Square, London, SW1W

 6  3  3 | £4,200,000



Key Information

Local Authority

City Of Westminster

Council Tax

Band = E

Tenure

Freehold

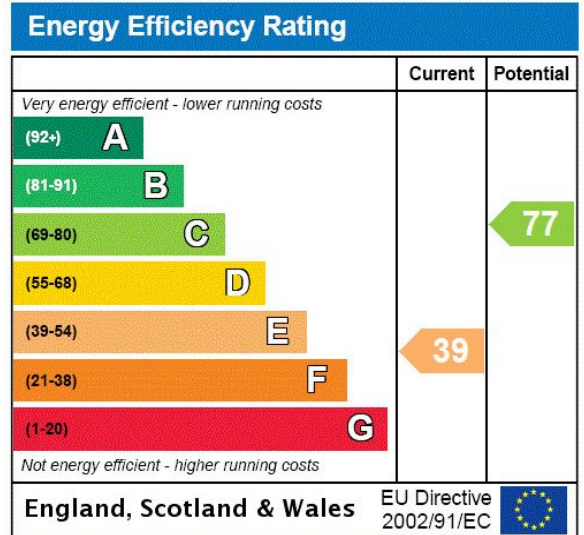
Services

No services

EPC

EPC Rating = E

PROPERTY



A beautiful Grade II listed Victorian house

Victoria Square, London, SW1W

 6  3  3 | £4,200,000



Enquire



Laura Wilcox-Chandley

Westminster & Pimlico

+44 (0) 7971 882 966

laura.wilcoxchandley@savills.com

More Information



[View on website](#)



[View Digital Brochure](#)



[Property Search](#)

Viewing strictly by appointment

Published: October 2023

Property Ref: WSS230058

powered by
FluxPro

Important Notice: Savills, its clients and any joint agents give notice that 1: They are not authorised to make or give any representations or warranties in relation to the property either here or elsewhere, either on their own behalf or on behalf of their client or otherwise. They assume no responsibility for any statement that may be made in these particulars. These particulars do not form part of any offer or contract and must not be relied upon as statements or representations of fact. 2: Any areas, measurements or distances are approximate. The text, photographs and plans are for guidance only and are not necessarily comprehensive. It should not be assumed that the property has all necessary planning, building regulation or other consents and Savills have not tested any services, equipment or facilities. Purchasers must satisfy themselves by inspection or otherwise.