



Bright and spacious one bedroom apartment in the heart of Westminster.

Greycoat Gardens, Greycoat Street, London, SW1P

£675,000 Share of Freehold

savills

A bright one bedroom flat • Popular mansion building in the heart of Westminster • Separate kitchen • Share of Freehold • Approx. 567 sq ft

Local Information

Greycoat Gardens corners Greycoat Street and Rochester Row, and is near the renowned locations of Victoria Street and Vincent Square.

The iconic world landmarks such as Houses of Parliament, Buckingham Palace and Westminster Abbey and Cathedral are all close by as is beautiful and tranquil St James Park.

Transport connections are superb; Victoria Station offers mainline national railway connections including the Gatwick Express as well as the Victoria Line underground. The District and Circle Line is accessed from St James's Park, and Jubilee Line at Westminster Station too.

St. James's Park Underground Station approx. 0.3 miles

Victoria Station approx. 0.6 miles

Westminster Underground Station approx. 1 mile

About this property

A first floor flat situated within a handsome late Victorian mansion block.

The property boasts a bright reception room with bay window and fireplace, separate kitchen, bedroom with feature fireplace and bathroom. The property benefits from a Share of Freehold.

Tenure

Share of Freehold

Local Authority

City Of Westminster

Energy Performance

EPC Rating = C

Viewing

All viewings will be accompanied and are strictly by prior arrangement through Savills Westminster & Pimlico Office.
Telephone: +44 (0) 203 430 6860.

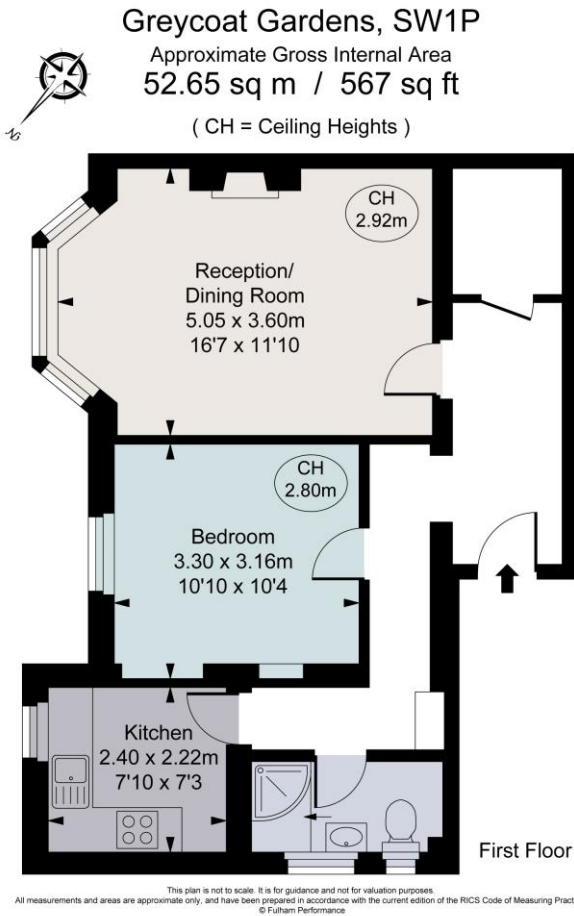




Greycourt Gardens, Greycourt Street, London, SW1P
 Gross Internal Area 567 sq ft, 52.7 m²

Alice Burch
 Westminster & Pimlico
 +44 (0) 203 430 6860
 alice.burch@savills.com

onTheMarket.com | savills | savills.co.uk



Energy Efficiency Rating		
	Current	Potential
Very energy efficient - lower running costs		
(92+) A		
(81-91) B		
(69-80) C	69	80
(55-68) D		
(39-54) E		
(21-38) F		
(1-20) G		
Not energy efficient - higher running costs		
England, Scotland & Wales	EU Directive 2002/91/EC	

Important Notice Savills, its clients and any joint agents give notice that 1: They are not authorised to make or give any representations or warranties in relation to the property either here or elsewhere, either on their own behalf or on behalf of their client or otherwise. They assume no responsibility for any statement that may be made in these particulars. These particulars do not form part of any offer or contract and must not be relied upon as statements or representations of fact. 2: Any areas, measurements or distances are approximate. The text, photographs and plans are for guidance only and are not necessarily comprehensive. It should not be assumed that the property has all necessary planning, building regulation or other consents and Savills have not tested any services, equipment or facilities. Purchasers must satisfy themselves by inspection or otherwise. 20220505LACE

