



Beautifully finished apartment overlooking Eccleston Square.

**Eccleston Square, Pimlico, London, SW1V**

Leasehold – approximately 996 years remaining



Beautifully refurbished apartment • Two double bedrooms • Two bathrooms • Contemporary kitchen • Spacious reception room • Communal gardens with tennis court • 880 sq ft •

#### Local Information

Eccleston Square is a principal Pimlico garden square, located to the south of Victoria, east of Belgravia and to the west of Westminster. The square centres around a beautiful communal garden with tennis courts and recreational areas.

Located on the St Georges Drive end of Eccleston Square, south of Victoria this is a superb central London location convenient for amenities in Sloane Square, Victoria and the iconic landmarks of Westminster.

Transport connections are close by at Victoria Station with main line and underground services and further more at Pimlico Underground Station.

#### Tenure

Leasehold

#### Local Authority

City of Westminster

#### Energy Performance

EPC Rating = E

#### About this property

Beautifully presented period apartment which cleverly combines charming period features with contemporary fixtures and fittings.

Set on the second floor (with lift) of this charming stucco fronted Pimlico house the flat enjoys stunning views over Eccleston Square.

The property comprises; two double bedrooms, two bathrooms (one en suite), fully fitted kitchen, reception room and access to the communal gardens.

#### Service Charge

Circa £4,800 per annum

#### Viewing

All viewings will be accompanied and are strictly by prior arrangement through Savills Westminster Office. Telephone: +44 (0) 203 430 6860.







**Eccleston Square, Pimlico, Westminster, London, SW1V**  
**Gross Internal Area** 880 sq ft, 81.8 m<sup>2</sup>



savills

savills.co.uk

**Sales**

Westminster & Pimlico

**+44 (0) 203 430 6860**

westminster@savills.com

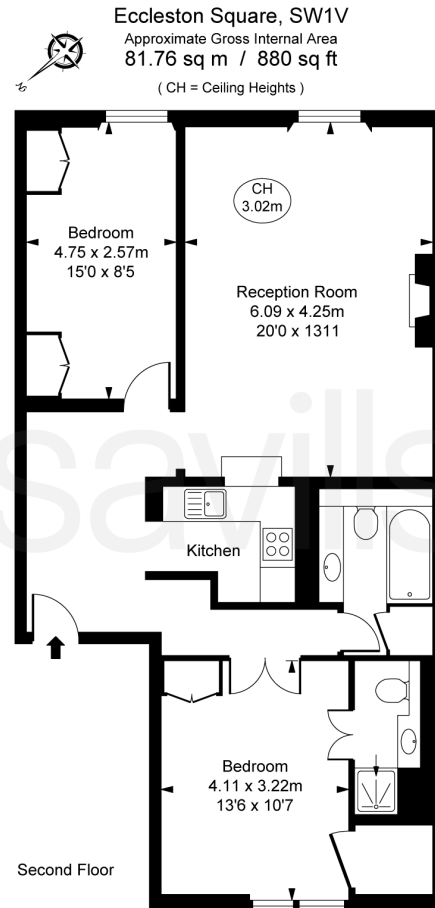


ILLUSTRATION FOR IDENTIFICATION PURPOSES ONLY  
ALL MEASUREMENTS ARE MAXIMUM AND INCLUDE WINDOW BAYS AND WARDROBES WHERE APPLICABLE  
THIS PLAN MUST NOT BE REPRODUCED BY ANY OTHER PERSON WITHOUT PERMISSION

**Important notice** Savills, its clients and any joint agents give notice that 1: They are not authorised to make or give any representations or warranties in relation to the property either here or elsewhere, either on their own behalf or on behalf of their client or otherwise. They assume no responsibility for any statement that may be made in these particulars. These particulars do not form part of any offer or contract and must not be relied upon as statements or representations of fact. 2: Any areas, measurements or distances are approximate. The text, photographs and plans are for guidance only and are not necessarily comprehensive. It should not be assumed that the property has all necessary planning, building regulation or other consents and Savills have not tested any services, equipment or facilities. Purchasers must satisfy themselves by inspection or otherwise. 20190917EMML

