



An immaculate 6th floor apartment in this former Berkeley Homes building near Victoria and Sloane Square

Consort Rise House, 203 Buckingham Palace Road, London, SW1W

Guide Price £1,385,000 Leasehold



6th floor dual aspect apartment with iconic landmark views •
2/3 bedrooms, 2 bathrooms (1 en suite), study/bedroom 3 •
Open plan reception room with balcony • Secure allocated
underground parking • Comfort cooling, concierge, passenger
lifts, residents gym and garden

Local Information

Consort Rise House is located on Buckingham Palace Road between Elizabeth Bridge and Pimlico Road making it convenient for Victoria, Belgravia, Sloane Square and Pimlico.

Victoria Station offers mainline rail services including the Gatwick Express and underground service on the Victoria line and District and Circle Line; The Jubilee line is one stop from Victoria at Green Park.

Victoria has benefited from significant recent development including an array of new boutiques, cafes and restaurants supplementing the renowned and historical destinations on Elizabeth Street and at Pimlico Green and the exciting new at creative hub at Eccleston Yards.

This is a thriving location in the heart of prime central London ideal for a home, pied a terre or investment.

About this property

A highly desirable 6th floor apartment in a building that was originally built by Berkeley Homes in 1998/9.

With a bright dual aspect and far reaching views of iconic London landmarks, the accommodation is well proportioned and comprises 2/3 bedrooms, 2 bathrooms (1 en suite), fitted kitchen, and an open plan reception room with south-west facing balcony, with the principal rooms benefiting from comfort cooling.

The building benefits from great amenities including a private residents' garden, gym and sauna, demised secure underground parking, concierge services and passenger lifts to all floors.

This apartment absolutely will lend itself for use as an excellent permanent or regular home or a larger centrally located pied a terre.

Tenure

Leasehold

Local Authority

City Of Westminster

Energy Performance

EPC Rating = D

Viewing

All viewings will be accompanied and are strictly by prior arrangement through Savills Westminster & Pimlico Office.

Telephone: +44 (0) 203 430 6860.





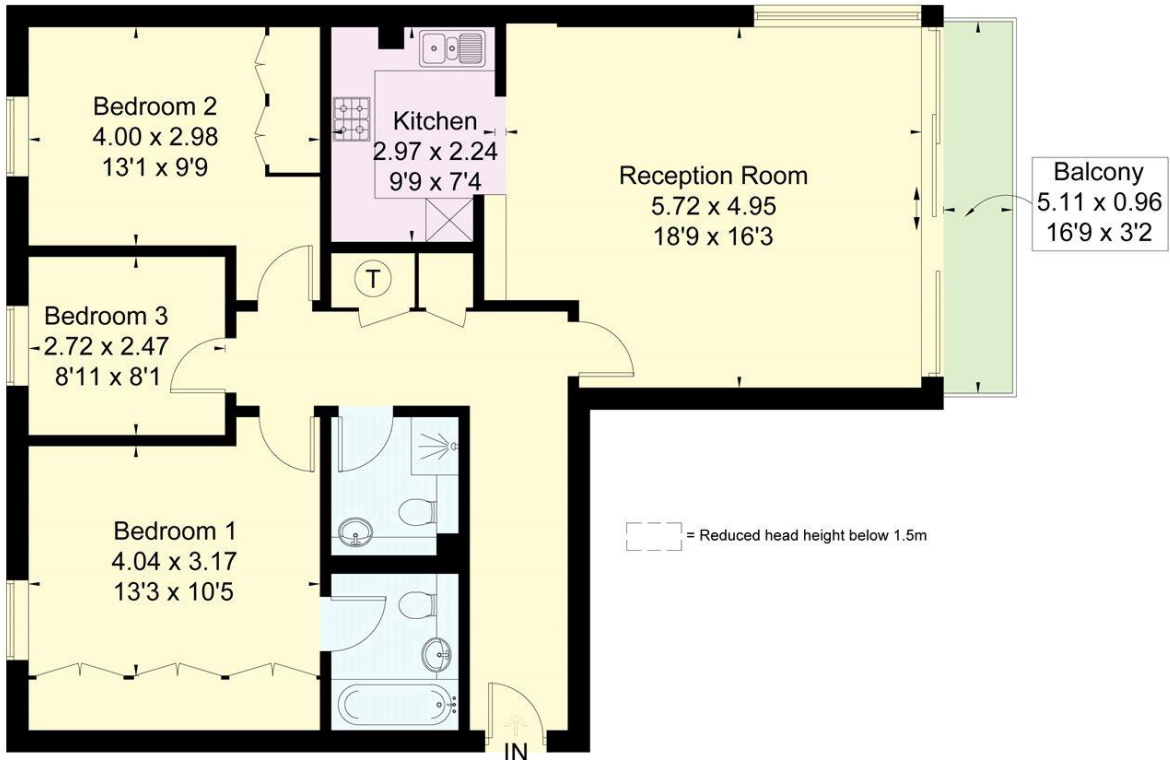
Consort Rise House, 203 Buckingham Palace Road, London, SW1W
Gross Internal Area 1056 sq ft, 98.1 m²

Service Charge - circa £6,500 per annum
Ground Rent

 |  savills | savills.co.uk


Sales
Westminster & Pimlico
+44 (0) 203 430 6860
Westminster@savills.com

Approximate Area = 97.3 sq m / 1047 sq ft
Including Limited Use Area (0.8 sq m / 9 sq ft)
Total = 98.1 sq m / 1056 sq ft
Balcony Area = 4.8 sq m / 52 sq ft
For identification only. Not to scale.
© Fourwalls Group



Sixth Floor

Surveyed and drawn in accordance with the International Property Measurement Standards (IPMS 2: Residential)
fourwalls-group.com 233147

Energy Efficiency Rating		
	Current	Potential
Very energy efficient - lower running costs		
(92+) A		
(81-91) B		
(69-80) C		
(55-68) D	68	70
(39-54) E		
(21-38) F		
(1-20) G		
Not energy efficient - higher running costs		
England, Scotland & Wales	EU Directive 2002/91/EC 	

Important notice Savills, its clients and any joint agents give notice that 1: They are not authorised to make or give any representations or warranties in relation to the property either here or elsewhere, either on their own behalf or on behalf of their client or otherwise. They assume no responsibility for any statement that may be made in these particulars. These particulars do not form part of any offer or contract and must not be relied upon as statements or representations of fact. 2: Any areas, measurements or distances are approximate. The text, photographs and plans are for guidance only and are not necessarily comprehensive. It should not be assumed that the property has all necessary planning, building regulation or other consents and Savills have not tested any services, equipment or facilities. Purchasers must satisfy themselves by inspection or otherwise. 20200116EMML

