

PENTHOUSE
**WARWICK
SQUARE**



SW 1



PENTHOUSE
**WARWICK
SQUARE**

ACCOMMODATION

Entrance Hall | Dining Room
Eat-in Kitchen | En Suite Study
4 En Suite Bedrooms | c. 60 ft West Facing
Terrace | Caretaker | Lift
Communal Garden

TERMS

Tenure:
Share of Freehold approx 996 years
EPC Rating C
Price: On Application

A BEAUTIFULLY DECORATED FIVE-BEDROOM PENTHOUSE APARTMENT SITUATED WITHIN AN ELEGANT AND KEY PERIOD BUILDING ON WARWICK SQUARE.

Accommodation comprises five bedrooms all with en suite bathrooms; a fitted contemporary style kitchen/breakfast room and further formal dining room; an upper-floor drawing room with roof terrace overlooking the award winning gardens of Warwick Square.

Arranged laterally over three Grade II* listed buildings, this apartment is a truly unique penthouse, meticulously designed and refurbished and benefiting from a passenger lift and use of the exclusive Warwick Square garden.

Within the mature planting the garden provides wonderful open space as well as a childrens playground and tennis court.



LOCATION

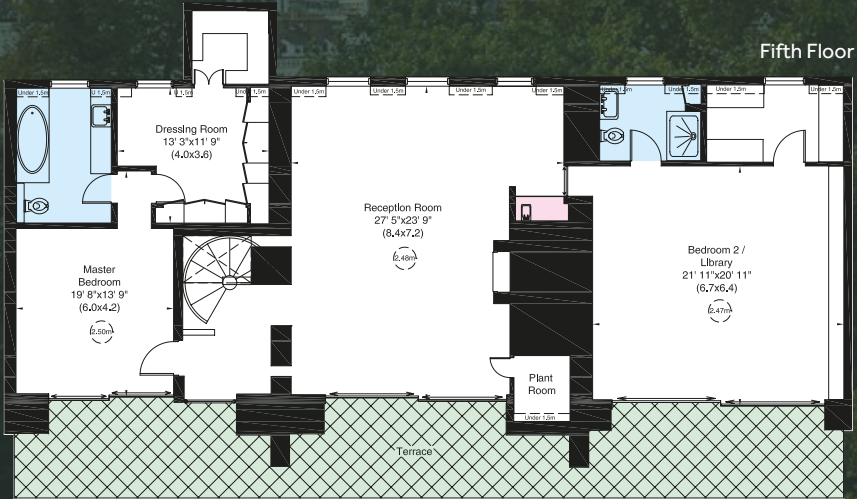
Warwick Square occupies an exceptional position in the heart of Pimlico, convenient for the eminent neighbourhoods of Belgravia Knightsbridge and Chelsea, as well as the increasingly desirable lifestyle destination of Victoria and the historical landmarks of Westminster and St. James's.

Gross Internal Area (Approx.)

349 sq m / 3,756 sq ft Including Under 1.5m | 346 sq m / 3,721 sq ft Excluding Under 1.5m

Terrace Area (Approx.)

49 sq m / 532 sq ft



In accordance with the Property Mis-Description Act 1991, the following details have been prepared in good faith, and are not intended to constitute part of an offer or contract. Any information contained herein (whether in the text, plans or photographs) is given in good faith but should not be relied upon as being a statement of representation of fact. Nothing in these Particulars shall be deemed to be a statement that the property is in good condition or otherwise nor that any services or facilities are in good working order. Any measurements of distances referred to herein are approximate only. October 2018 361226

Savills Westminster
57 Buckingham Gate
London SW1E 6AJ
020 3430 6860
savills.co.uk

**RUSSELL
SIMPSON**
5 Anderson Street, London SW3 3LU
020-7225 0277
www.russellsimpson.co.uk