



# Beautiful 1 bedroom apartment

**Dolphin Square, Pimlico, London, SW1V**

£425 pw (£1,841.67 pcm) plus fees apply, Furnished  
Available Now





- Impressive 1 bedroom apartment
- Newly redecorated, fully furnished
- Reception room, kitchen and bathroom
- On site gym, pool, squash and tennis courts (membership required)
- 24/7 reception
- 3.5 acre communal gardens

#### Local Information

Dolphin Square is a prestigious, highly regarded neo-Georgian development located to the south of the Pimlico 'grid', adjacent to the beautiful St. George's square and immediately to the north of the River Thames and Chelsea Embankment.

The property is within reach of the many amenities, restaurants, cafes and shops of Victoria, Belgravia Westminster and Pimlico.

Transport Links include:

Victoria Line (Pimlico): approx. 0.2 miles.

Circle & District Lines and mainline rail services (Victoria): approx. 0.7 miles.

Overground services and Victoria line (Vauxhall): approx. 0.6 miles.

Local parks and open spaces include:

St. George's Square communal gardens: 0.1 miles

Battersea Park: 0.8 miles

#### About this property

Beautiful 1 bedroom apartment, recently redecorated and presented in excellent condition throughout.

This fully furnished apartment, which is set on the 2nd floor comprises: 1 double bedroom,

reception room, separate kitchen and bathroom.

Residents of Dolphin Square benefit from the following:

- 24/7 reception
- 3.5 acre landscaped gardens
- On-site restaurant, grocery store and dry cleaners
- Leisure facilities including: Gym, 17m swimming pool, spa, tennis courts, squash court, studios. (Separate membership required).
- Mail delivered to the apartment
- Parking available (by separate negotiation)

Please note, that there are planned building works near this property. For more information, please contact our office.

#### Furnishing

Furnished

#### Local Authority

The City of Westminster Council Tax Band = E

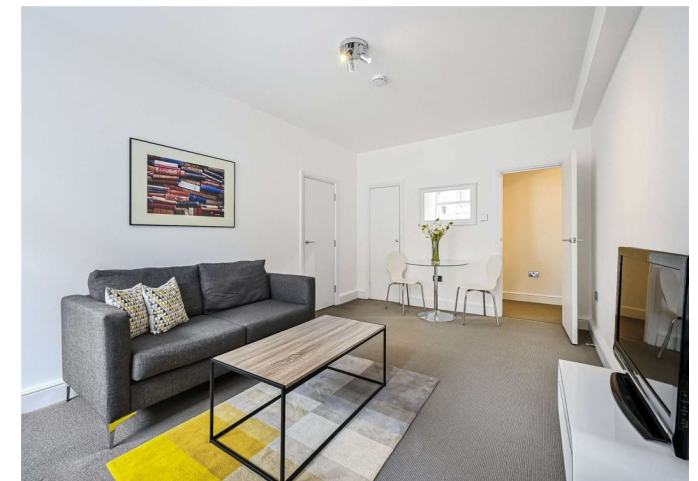
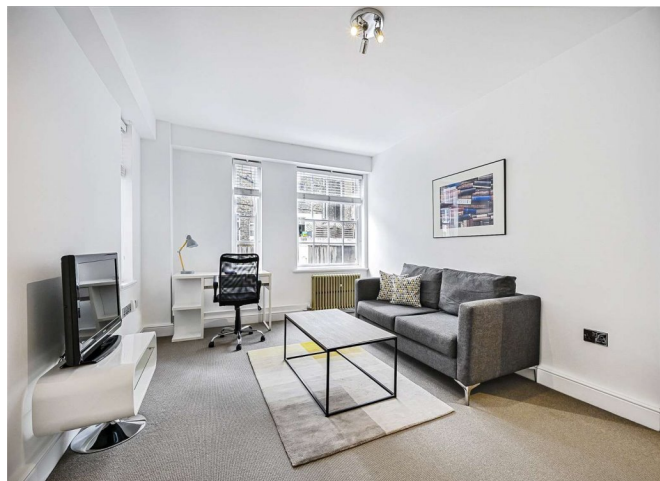
#### Energy Performance

EPC Rating = C

#### Viewing

All viewings will be accompanied and are strictly by prior arrangement through Savills Westminster & Pimlico Lettings Office.

Telephone: +44 (0) 203 430 6870.







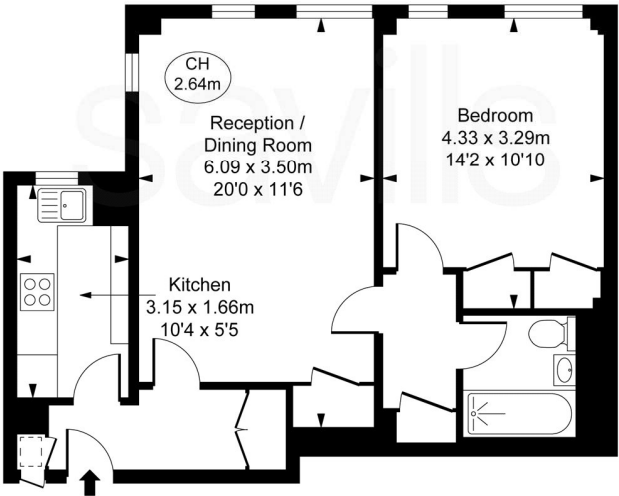


Dolphin Square, Pimlico, London, SW1V  
Gross Internal Area 546 sq ft, 50.7 m²

Sean Tully  
Westminster & Pimlico Lettings  
+44 (0) 203 430 6870  
sean.tully@savills.com

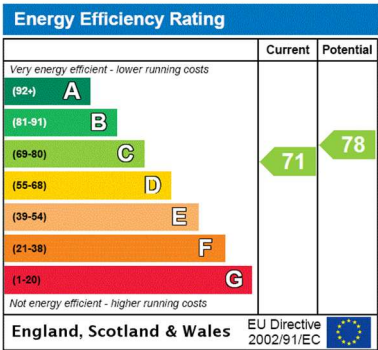


Collingwood,  
Dolphin Square, SW1V  
Approximate Gross Internal Area  
50.77 sq m / 546 sq ft  
( Including restricted height  
under 1.5m [ ] )  
( CH = Ceiling Heights )



Second Floor

This plan is not to scale. It is for guidance and not for valuation purposes.  
All measurements and areas are approximate only, and have been prepared in accordance with the current edition of the RICS Code of Measuring Practice.  
© Fulham Performance



**Important notice** Savills, their clients and any joint agents give notice that: 1. They are not authorised to make or give any representations or warranties in relation to the property either here or elsewhere, either on their own behalf or on behalf of their client or otherwise. They assume no responsibility for any statement that may be made in these particulars. These particulars do not form part of any offer or contract and must not be relied upon as statements or representations of fact. 2. Any areas, measurements or distances are approximate. The text, images and plans are for guidance only and are not necessarily comprehensive. It should not be assumed that the property has all necessary planning, building regulation or other consents and Savills have not tested any services, equipment or facilities. Prospective tenants must satisfy themselves by inspection or otherwise. Please note that the local area may be affected by aircraft noise, you should make your own enquiries regarding any noise within the area before you make any offer.

\*There are different rules and fees for different tenancy types. For details of our fees and charges please go to Savills.co.uk/tenant-fees. For more detailed information read our applicant guide at savills.co.uk/applicant-guide.  
Hard copy available on request. . 20210611GZQY

