



****Video Available** Beautiful modern 1 bedroom**

Greycoat Street, Westminster, London, SW1P

£585 pw (£2,535 pcm) plus fees apply, Furnished
Available from 05.06.2020



Video available upon request for remote viewing • Exceptional modern apartment • Heating and cooling charges included within the rent • Furnished to a very high standard • 1 double bedroom (with built-in storage) • Reception with oak flooring • Open-plan designer kitchen • Concierge & Bicycle storage • Underfloor heating and comfort cooling • 0.2 miles (approx) to St. James Park station

Local Information

33 Greycoat Street corners Greycoat Street and Rochester Row, between the renowned locations of Victoria Street and Vincent Square. It is just 0.2 miles (approx.) to St. James Park station.

Transport connections are superb; Victoria Station offers mainline national railway connections including the Gatwick Express as well as the Victoria Line underground. The District and Circle Line is accessed from St James's Park, and Jubilee Line at Westminster Station too.

About this property

Exceptional contemporary 1 bedroom apartment within this beautiful boutique development. This apartment is almost new, having only been occupied for 4 months.

Benefiting from an exquisite luxury design & build quality, the apartment features a stylish kitchen by Varenna Poliform, Italian designer wardrobes, oak wooden flooring, comfort cooling and underfloor heating.

The property comprises 1 double bedroom (with built-in storage), reception room, open-plan fully fitted kitchen and 1 bathroom.

Reasonable heating and cooling charges shall be included within the rent.

33 Greycoat is serviced by a 12 hour concierge and has bicycle storage available for the residents. In addition, tenants may apply to Westminster Council for a residents' parking permit.

There is planned building works near this property. For more information please contact our office.

Furnishing

Furnished

Local Authority

Council Tax Band = E

Energy Performance

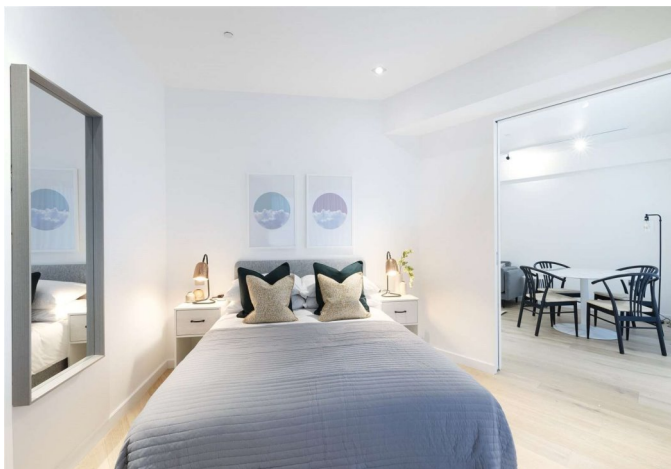
EPC Rating = B

Viewing

All viewings will be accompanied and are strictly by prior arrangement through Savills Westminster & Pimlico Lettings Office.

Telephone: +44 (0) 203 430 6870.



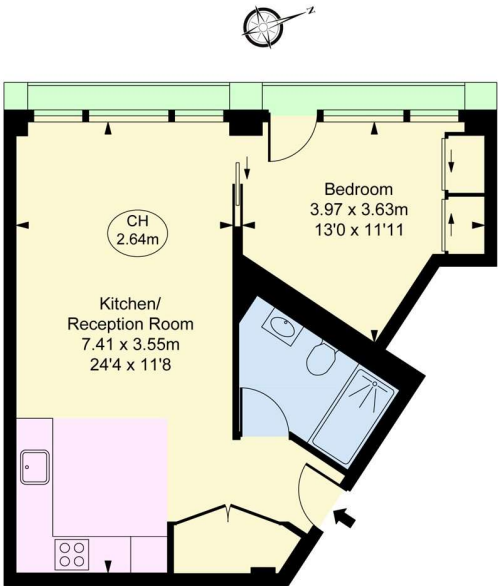


Greycoat Street, Westminster, London, SW1P
Gross Internal Area 499 sq ft, 46.4 m²

Suze Mendonca
Westminster & Pimlico Lettings
+44 (0) 203 430 6870
suze.mendonca@savills.com



Greycoat Street, SW1P
Approximate Gross Internal Area
46.33 sq m / 499 sq ft
(CH = Ceiling Heights)



Ground Floor

This plan is not to scale. It is for guidance and not for valuation purposes.
All measurements and areas are approximate only, and have been prepared in accordance with the current edition of the RICS Code of Measuring Practice.
© Fulham Performance

Energy Efficiency Rating		
	Current	Potential
Very energy efficient - lower running costs		
(92+) A		
(81-91) B	81	81
(69-80) C		
(55-68) D		
(39-54) E		
(21-38) F		
(1-20) G		
Not energy efficient - higher running costs		
England, Scotland & Wales	EU Directive 2002/91/EC	

Important notice Savills, their clients and any joint agents give notice that: 1. They are not authorised to make or give any representations or warranties in relation to the property either here or elsewhere, either on their own behalf or on behalf of their client or otherwise. They assume no responsibility for any statement that may be made in these particulars. These particulars do not form part of any offer or contract and must not be relied upon as statements or representations of fact. 2. Any areas, measurements or distances are approximate. The text, images and plans are for guidance only and are not necessarily comprehensive. It should not be assumed that the property has all necessary planning, building regulation or other consents and Savills have not tested any services, equipment or facilities. Prospective tenants must satisfy themselves by inspection or otherwise. Please note that the local area may be affected by aircraft noise, you should make your own enquiries regarding any noise within the area before you make any offer.

*There are different rules and fees for different tenancy types. For details of our fees and charges please go to Savills.co.uk/tenant-fees. For more detailed information read our applicant guide at savills.co.uk/applicant-guide.
Hard copy available on request. . 20200603DEAE

