



# Superb 2 bedroom, 2 bathroom duplex apartment

**Central Building, 3 Matthew Parker Street, Westminster, London, SW1H**

£950 pw (£4,116.67 pcm) plus fees apply, Furnished  
Available from 13.11.2020



- Beautiful top floor duplex apartment
- 2 double bedrooms
- 2 bathrooms
- Garaged parking
- Iconic landmark outlook and dual aspect
- Concierge
- Secure underground parking

#### Local Information

Matthew Parker Street is located close to St. James's Park and Parliament Square, and can be accessed via Tothill Street, north east of Victoria Street.

Transport links are convenient with mainline rail connections including the Gatwick Express at Victoria Station, the District and Circle line at St James's Park and Jubilee line at Westminster Underground Station.

Local landmarks are closeby such as Westminster Abbey and the Houses of Parliament and the location offers great lifestyle amenities, with numerous cafes shops and restaurants and brands ranging from Michelle Roux Jnr and Jason Atherton, to Curzon Cinema, Jo Malone and Iris and June. The comprehensive redevelopment of Victoria has seen the area become a hub for fashion and food.

#### About this property

This apartment is a top floor Duplex flat (7th and 8th floors) with the accommodation briefly comprising; two bedrooms, two bathrooms (plus additional cloakroom) and a dual aspect upper floor open plan reception room and fitted kitchen. The reception room is notable for its windows taking in an iconic view

of St James Park to the north and also Westminster Abbey.

There is secure garaged parking (1 car) and concierge.

#### Furnishing

Furnished

#### Local Authority

Westminster City Council, Bi-Borough Shared Legal Services Council Tax Band = G

#### Energy Performance

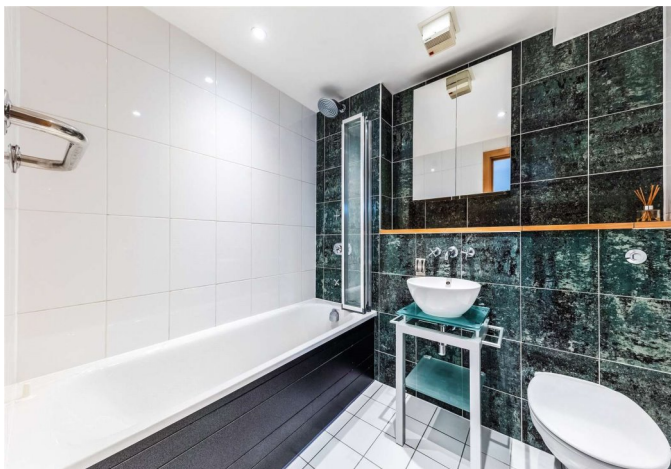
EPC Rating = C

#### Viewing

All viewings will be accompanied and are strictly by prior arrangement through Savills Westminster & Pimlico Lettings Office.

Telephone: +44 (0) 203 430 6870.





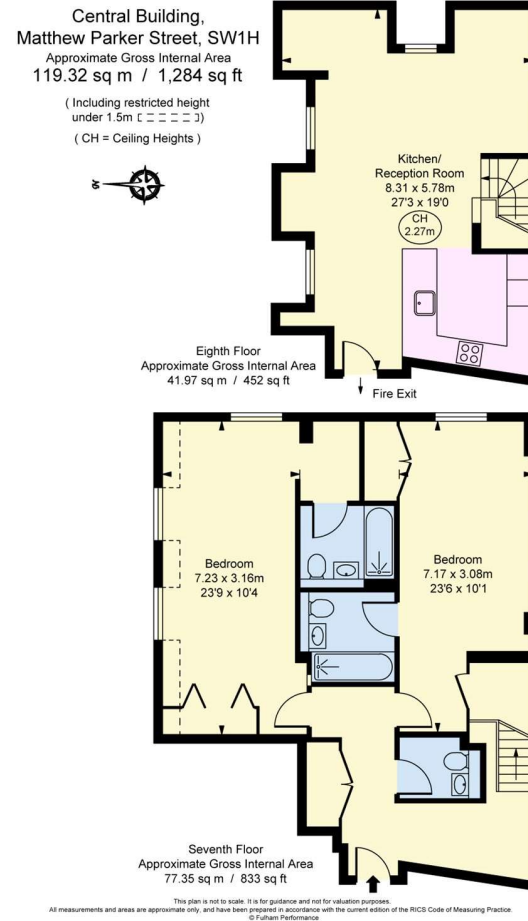
**Central Building, 3 Matthew Parker Street, Westminster, London, SW1H**  
**Gross Internal Area** 1284 sq ft, 119.3 m<sup>2</sup>

**Roderick Allan**  
Westminster & Pimlico Lettings  
**+44 (0) 203 430 6870**  
roderick.allan@savills.com



savills

savills.co.uk



**Important notice** Savills, their clients and any joint agents give notice that: 1. They are not authorised to make or give any representations or warranties in relation to the property either here or elsewhere, either on their own behalf or on behalf of their client or otherwise. They assume no responsibility for any statement that may be made in these particulars. These particulars do not form part of any offer or contract and must not be relied upon as statements or representations of fact. 2. Any areas, measurements or distances are approximate. The text, images and plans are for guidance only and are not necessarily comprehensive. It should not be assumed that the property has all necessary planning, building regulation or other consents and Savills have not tested any services, equipment or facilities. Prospective tenants must satisfy themselves by inspection or otherwise. Please note that the local area may be affected by aircraft noise, you should make your own enquiries regarding any noise within the area before you make any offer.

\*There are different rules and fees for different tenancy types. For details of our fees and charges please go to [Savills.co.uk/tenant-fees](https://www.savills.co.uk/tenant-fees). For more detailed information read our applicant guide at [savills.co.uk/applicant-guide](https://www.savills.co.uk/applicant-guide).  
Hard copy available on request. . 20201016DEAE



arla | **propertymark**

**PROTECTED**