



Beautiful penthouse apartment with large private terrace

Dover House, 170 Westminster Bridge Road, Waterloo, London, SE1

£775 pw (£3,358.33 pcm) plus fees apply, Furnished
Available from 27.05.2020



Impressive penthouse apartment • 2 double bedrooms (with built-in storage) • 2 contemporary bathrooms • Large private balcony • Reception & open-plan kitchen • Air-conditioning and double glazing • Northern, Waterloo and Bakerloo lines all within 0.2 miles (approx) • Fully furnished • MANAGED BY SAVILLS

Local Information

Dover House is located in Waterloo, within 0.3 miles of the 'South Bank' - one of London's most desirable and exciting areas, bustling with restaurants, cafes, theatres and tremendous public spaces around the Thames.

Local points of interest include, the UK's largest cinema screen at the BFI IMAX, London's Southbank, Royal Festival Hall, Hayward Gallery, National Theatre, Young and Old Vic Theatres, the Garden Museum and London Eye. However, the unexpected discovery about this location is the ease with which one can access central London.

Local transport connections include:

Bakerloo Line, Lambeth North: (approx) 0.1 miles.
Northern & Waterloo Lines, Waterloo: (approx) 0.2 miles.

About this property

Beautiful 2 bedroom penthouse apartment in one of Waterloo's most highly regarded boutique developments. This late Victorian former hotel has been completely refurbished to its former grandeur - the work that was recently completed here is to an exacting standard, creating a truly impeccable property. The apartment is fully furnished and

benefits from air-conditioning, double glazing, solid wood flooring (reception), granite work tops and great built-in storage.

The apartment, of approx 871 sq ft (approx) is on the 4th floor (with a lift) and comprises: 2 double bedrooms, 2 bathrooms, reception, open plan kitchen, entrance hall, large private balcony and use of a communal bicycle storage area.

Please note that there is planned building works near this property. Please contact our office for more information.

Furnishing

Furnished

Local Authority

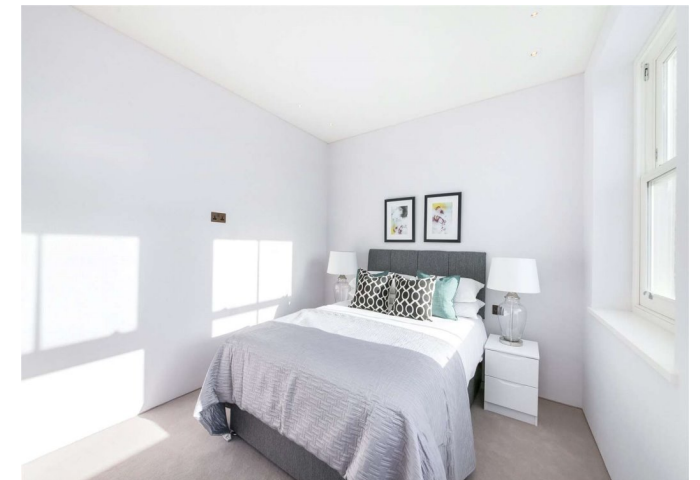
London Borough Of Lambeth
Council Tax Band = D

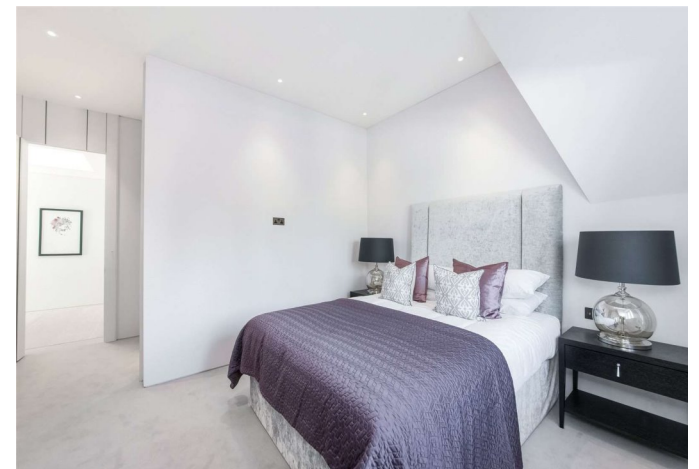
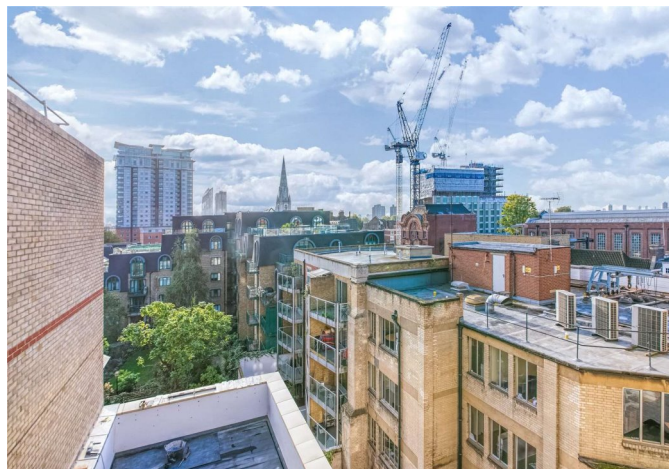
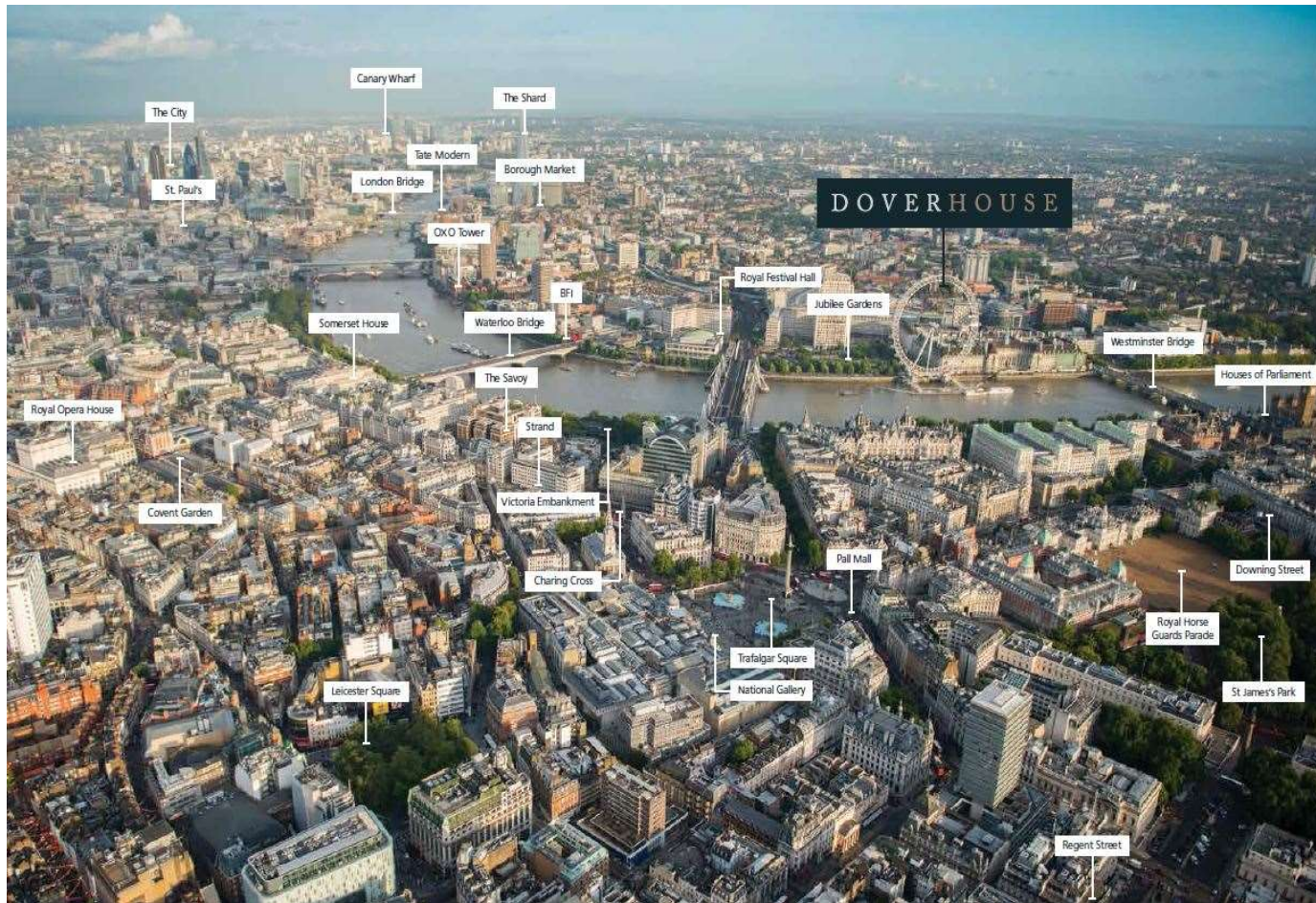
Energy Performance

EPC Rating = C

Viewing

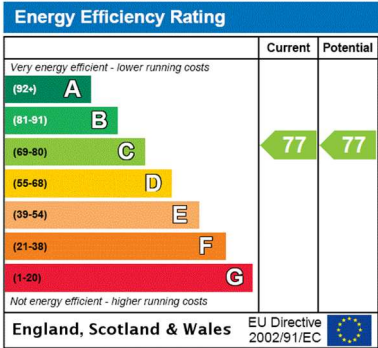
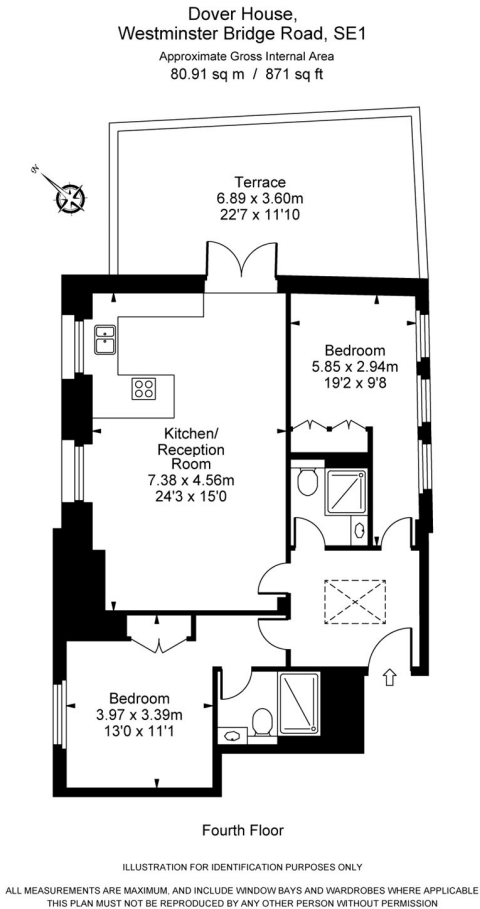
All viewings will be accompanied and are strictly by prior arrangement through Savills Westminster & Pimlico Lettings Office.
Telephone: +44 (0) 203 430 6870.





Dover House, 170 Westminster Bridge Road, Waterloo, London, SE1
Gross Internal Area 871 sq ft, 80.9 m²

Suze Mendonca
Westminster & Pimlico Lettings
+44 (0) 203 430 6870
suze.mendonca@savills.com



Important notice Savills, their clients and any joint agents give notice that: 1. They are not authorised to make or give any representations or warranties in relation to the property either here or elsewhere, either on their own behalf or on behalf of their client or otherwise. They assume no responsibility for any statement that may be made in these particulars. These particulars do not form part of any offer or contract and must not be relied upon as statements or representations of fact. 2. Any areas, measurements or distances are approximate. The text, images and plans are for guidance only and are not necessarily comprehensive. It should not be assumed that the property has all necessary planning, building regulation or other consents and Savills have not tested any services, equipment or facilities. Prospective tenants must satisfy themselves by inspection or otherwise. Please note that the local area may be affected by aircraft noise, you should make your own enquiries regarding any noise within the area before you make any offer.

*There are different rules and fees for different tenancy types. For details of our fees and charges please go to Savills.co.uk/tenant-fees. For more detailed information read our applicant guide at savills.co.uk/applicant-guide.
Hard copy available on request. . 20200528DEAE

