



Modern 2 bedroom apartment in a well presented development

Horsley Court, Montaigne Close, Westminster, London, SW1P

£500 pw (£2,166.67 pcm) plus fees apply, Furnished
Available from 27.02.2021



- Fully redecorated modern apartment
- 24/7 concierge
- Garaged parking
- Residents' gym and spa
- Two well proportioned double bedrooms
- Two full bathrooms
- Central Westminster location

Local Information

Horsley Court is in the heart of Westminster, located to the south of St James's Park and Victoria and to the north of Pimlico. The area includes some of London's most iconic landmarks, yet retains a surprisingly village like atmosphere.

The property is within reach of the many amenities, restaurants and shops of Victoria, Westminster and St James.

Local parklands include: Green Park and St James's Park

Transport Links include:

Victoria Line (Pimlico): approx 0.2 miles

Victoria, District, Circle and mainline rail services (Victoria): approx 0.4 miles

Jubilee Line (Westminster): approx 0.8 miles

About this property

Modern 2 bedroom apartment in a well presented development with concierge, parking and residents leisure facilities (including gym, steam room, sauna and jacuzzi).

The apartment of approx 775 sq ft is very well proportioned and comprises: reception with open plan kitchen dinner, 2 bedrooms, 2 bathrooms and one off street parking space.

Please note that there are planned building applications near this property. For information please contact our office.

Furnishing

Furnished

Local Authority

Westminster City Council, Bi-Borough Shared Legal Services
Council Tax Band = G

Energy Performance

EPC Rating = D

Viewing

All viewings will be accompanied and are strictly by prior arrangement through Savills Westminster & Pimlico Lettings Office.

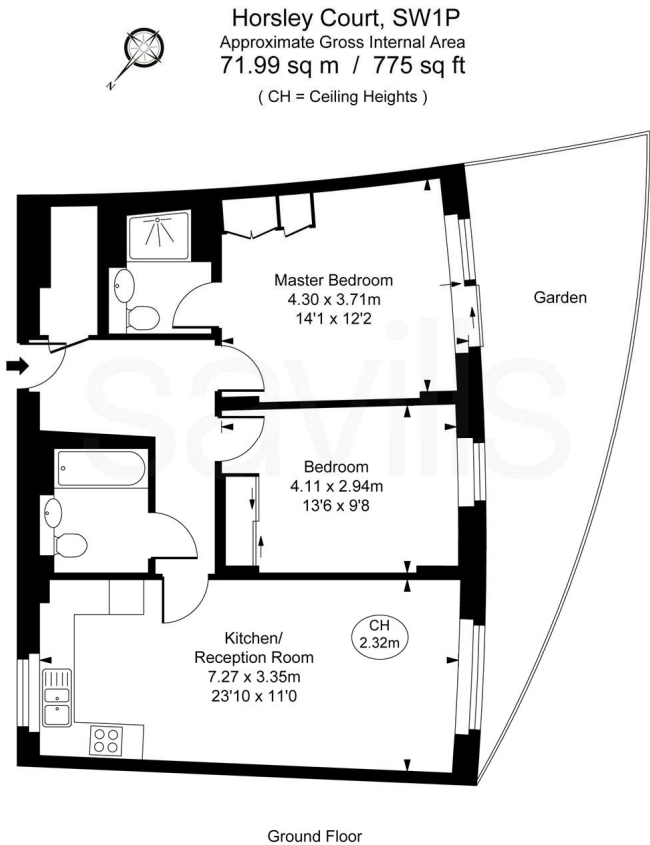
Telephone: +44 (0) 203 430 6870.



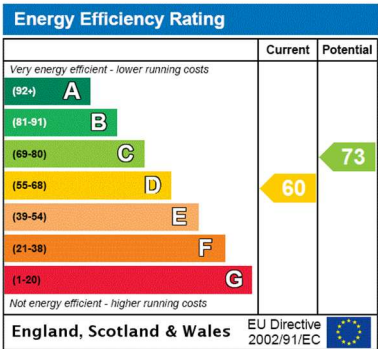


Horsley Court, Montaigne Close, Westminster, London, SW1P
Gross Internal Area 775 sq ft, 72 m²

Suze Mendonca
Westminster & Pimlico Lettings
+44 (0) 203 430 6870
suze.mendonca@savills.com



This plan is not to scale. It is for guidance and not for valuation purposes.
All measurements and areas are approximate only, and have been prepared in accordance with the current edition of the RICS Code of Measuring Practice.
© Fulham Performance



Important notice Savills, their clients and any joint agents give notice that: 1. They are not authorised to make or give any representations or warranties in relation to the property either here or elsewhere, either on their own behalf or on behalf of their client or otherwise. They assume no responsibility for any statement that may be made in these particulars. These particulars do not form part of any offer or contract and must not be relied upon as statements or representations of fact. 2. Any areas, measurements or distances are approximate. The text, images and plans are for guidance only and are not necessarily comprehensive. It should not be assumed that the property has all necessary planning, building regulation or other consents and Savills have not tested any services, equipment or facilities. Prospective tenants must satisfy themselves by inspection or otherwise. Please note that the local area may be affected by aircraft noise, you should make your own enquiries regarding any noise within the area before you make any offer.

*There are different rules and fees for different tenancy types. For details of our fees and charges please go to Savills.co.uk/tenant-fees. For more detailed information read our applicant guide at savills.co.uk/applicant-guide.
Hard copy available on request. . 20210212GZQY

