



Charming period town house close to the City

154 Stockbridge Road, Winchester SO22 6RN

Freehold

savills

Extended open-plan kitchen/living room • Sitting room
Utility/cloakroom/WC • Three double bedrooms • Family
bathroom and en-suite • Lovely enclosed garden • No
forward chain • EPC = D

Situation

Perfectly located at the heart of the much sought-after area of Fulflood which is renowned for its high-quality Victorian and Edwardian housing stock and is within a short distance of the City Centre, giving easy access to the wealth of shops, restaurants and recreational facilities.

Winchester is approximately 57 minutes by train direct from London Waterloo and the M3 motorway (J9, 10 and 11) is within easy reach, making both London and Southampton readily accessible. The interconnection with the M27 makes Southampton International Airport easily commutable and also opens up the South Coast and New Forest. The A34 to the north provides access to Oxford, the Midlands, the A303 and the West Country.

The local school catchment is highly regarded, from primary at Western through to secondary at Westgate and on to Peter Symonds College or Winchester University.

Description

A wonderful example of Victorian housing, which offers a versatile and extended interior across three floors. The property is set back from the road behind a pretty wrought iron gated front garden. From a welcoming entrance hall, there is a good

sized reception room to the front with a working fireplace, a separate utility cloakroom with plumbing space for a washing machine, and a door through to a wonderful open-plan kitchen/dining/living room, which then has folding doors opening on to the rear garden terrace. The accommodation is arranged across the first and second floors, with three double bedrooms. There are two en suite bathrooms.

Outside, the rear garden is landscaped to incorporate a terrace adjacent to the house, a lawn area and a large garden shed at the rear.

Tenure

Freehold

Services

All mains services connected

Outgoings

Council Tax Band D

Post Code

SO22 6RN

Local Authority

Winchester City Council

Energy Performance

A copy of the full Energy Performance Certificate is available on request.

Viewing

Strictly by appointment with Savills.





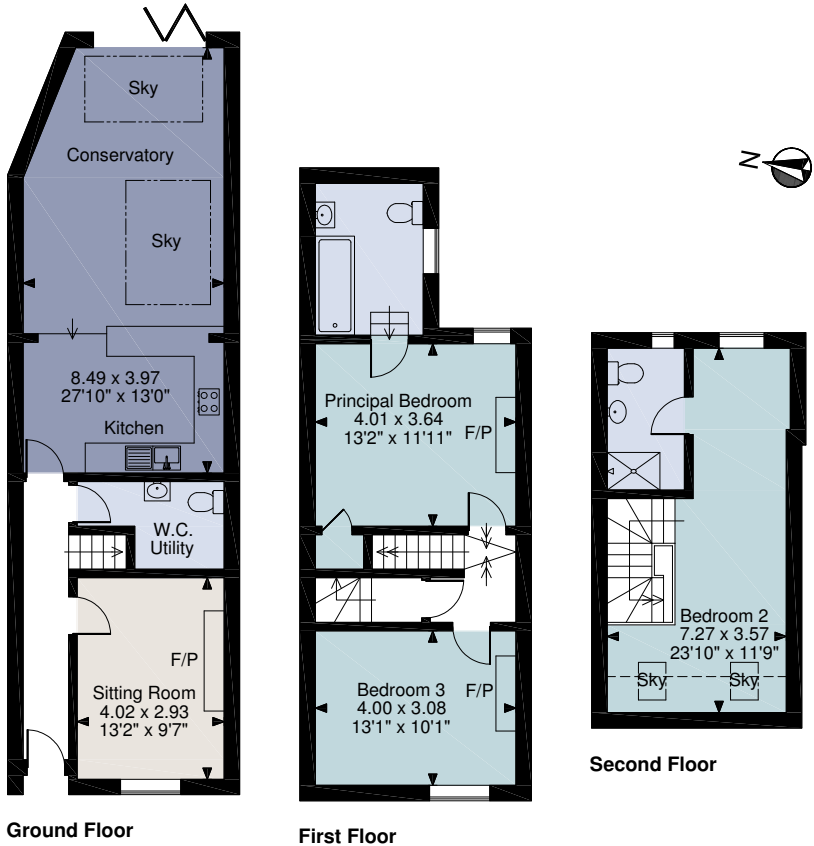
154 Stockbridge Road, Winchester SO22 6RN
Main House gross internal area 1,296 sq ft / 120 sq m

Jon Lacey
Savills Winchester
01962 841842
winchester@savills.com



savills

savills.co.uk



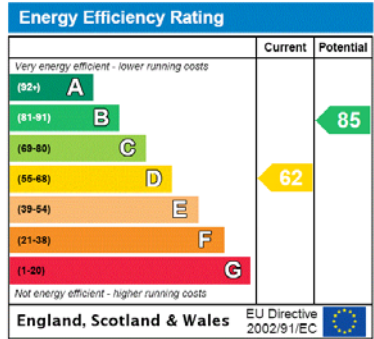
FOR ILLUSTRATIVE PURPOSES ONLY - NOT TO SCALE

The position & size of doors, windows, appliances and other features are approximate only.

□ □ □ Denotes restricted head height

© ehous. Unauthorised reproduction prohibited. Drawing ref. dig/8446954/SS

For identification only. Not to scale. © Insert date stamp



Important notice Savills, its clients and any joint agents give notice that 1: They are not authorised to make or give any representations or warranties in relation to the property either here or elsewhere, either on their own behalf or on behalf of their client or otherwise. They assume no responsibility for any statement that may be made in these particulars. These particulars do not form part of any offer or contract and must not be relied upon as statements or representations of fact. 2: Any areas, measurements or distances are approximate. The text, photographs and plans are for guidance only and are not necessarily comprehensive. It should not be assumed that the property has all necessary planning, building regulation or other consents and Savills have not tested any services, equipment or facilities. Purchasers must satisfy themselves by inspection or otherwise.

