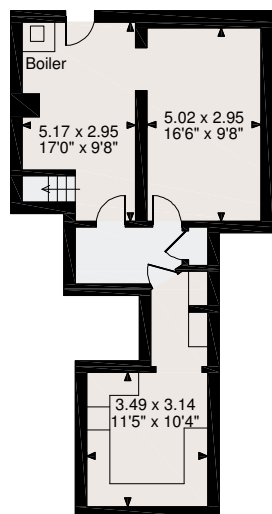
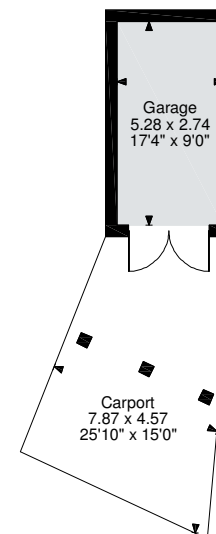
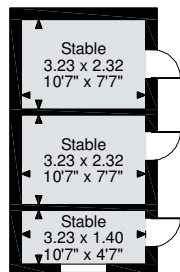
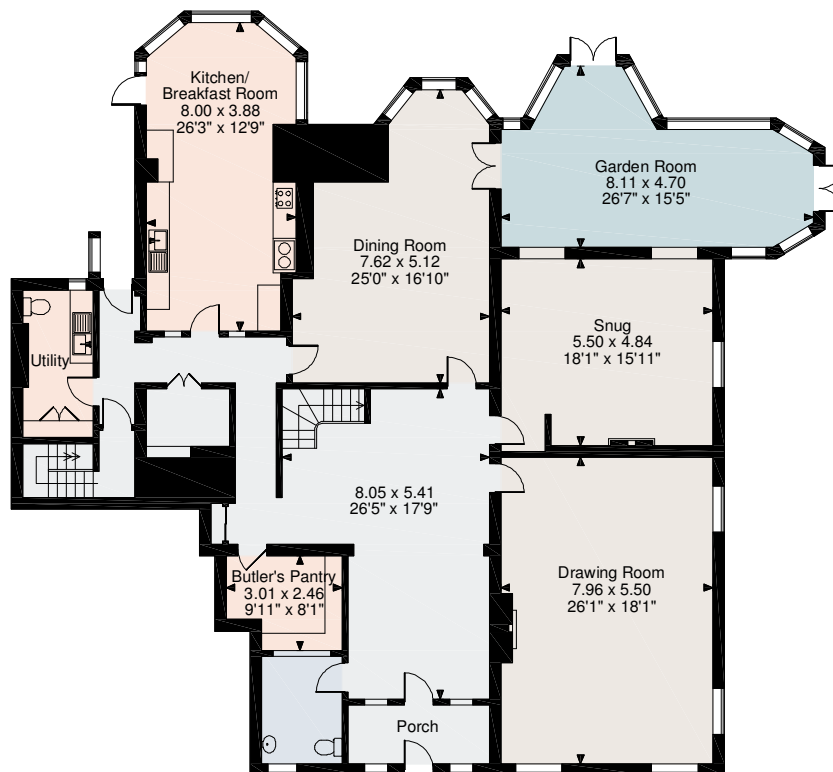


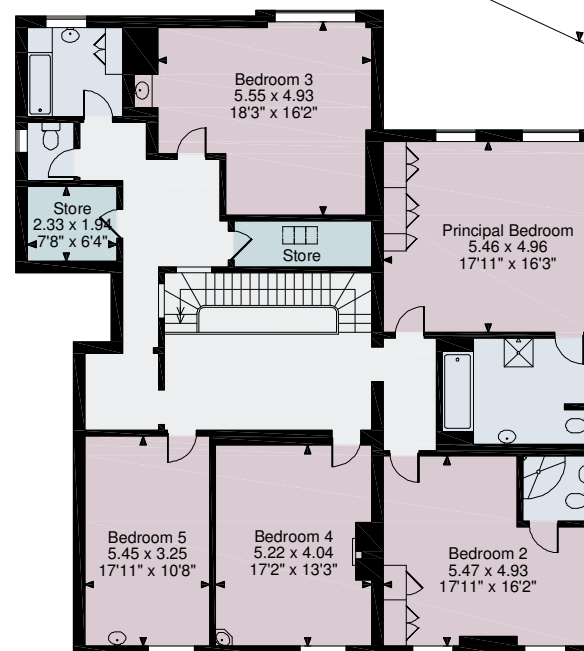
Tittensor Road, Stoke-on-Trent
Main House gross internal area = 5,436 sq ft / 505 sq m
Garage gross internal area = 156 sq ft / 14 sq m
Outbuilding gross internal area = 1,185 sq ft / 110 sq m
Stables gross internal area = 220 sq ft / 20 sq m
 Quoted Area Excludes 'Carport'



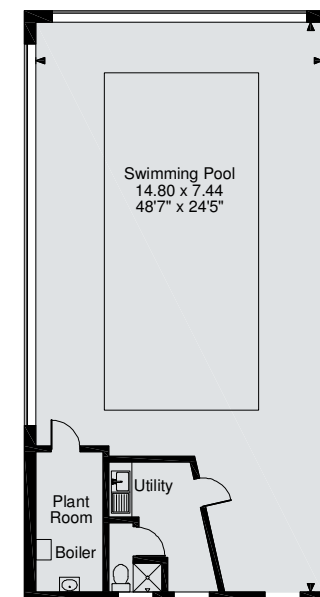
Cellar



Ground Floor



First Floor



Outbuilding

FOR ILLUSTRATIVE PURPOSES ONLY - NOT TO SCALE

The position & size of doors, windows, appliances and other features are approximate only.

© ehouse. Unauthorised reproduction prohibited. Drawing ref. dig/8537048/JCR