



A superb two bedroom apartment located on the desirable Slopes of Wimbledon

Ravenscar Lodge, 22 The Downs, Wimbledon, London, SW20

Leasehold





Two double bedrooms • Well presented throughout • Chain free • Great location • Garage • Long lease

Local Information

The Downs runs north to south from the Ridgway to Worple Road and is a much sought after location. The property is located at the lower end of the street and is approximately 1.2km from Wimbledon Village High Street with its popular collection of shops, restaurants and bars.

Wimbledon Common is under 1km away and offers 1,200 acres approx of open space, ideal for walking, riding, golf and cycling. Locally are a number of highly sought after schools including King's College School, The Ursuline Prep and The Hall School. Wimbledon Town Centre and Raynes Park station are both easily accessible and within 1.1 km.

Source of distances Google Pedometer
All measurements are approximate.

About this property

This fantastic two double bedroom purpose built apartment is very well situated on a much sought after road.

The flat opens into a wide central hallway giving a sense of light and space. The generous reception room is ideal for entertaining and features attractive wood flooring. The contemporary kitchen has an

excellent range of fitted units and cupboards with integrated appliances. The principal bedroom features a wall of well designed wardrobes and there is an additional double bedroom to the rear. A stylish bathroom is located alongside.

This chain free property has a long lease and benefits from a garage.

Tenure

Leasehold

Local Authority

Merton

Energy Performance

EPC Rating = D

Viewing

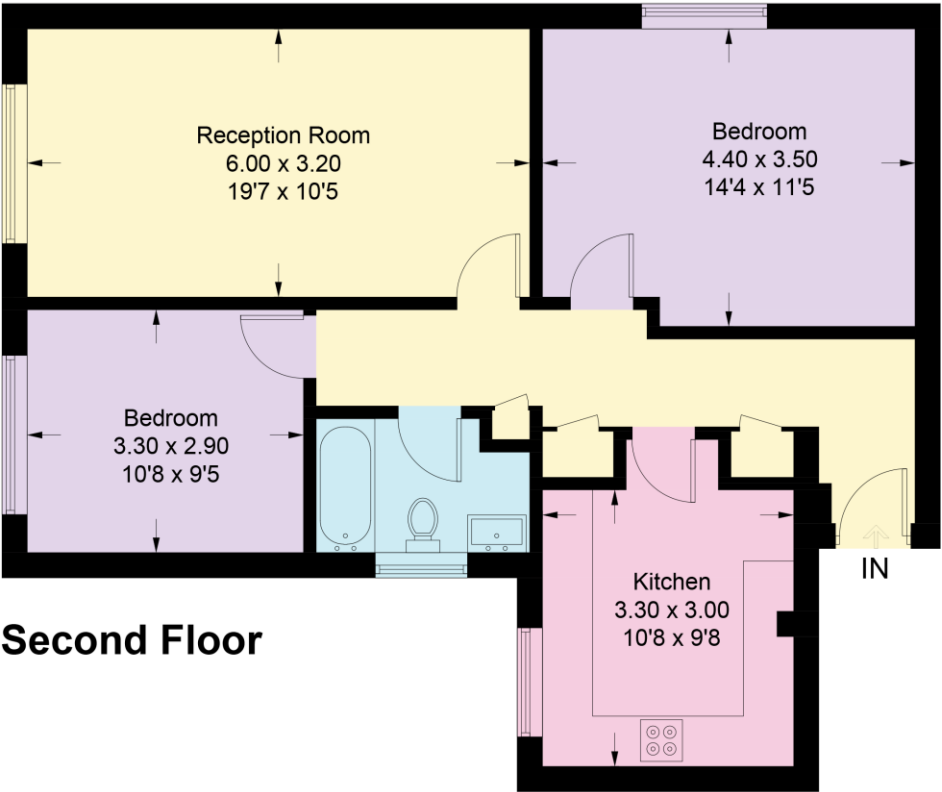
All viewings will be accompanied and are strictly by prior arrangement through Savills Wimbledon Office.
Telephone:
+44 (0) 20 8971 8111.



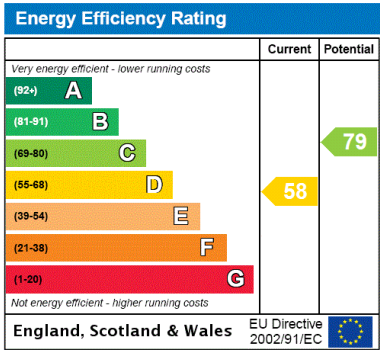


Ravenscar Lodge, SW20

Approximate Gross Internal Area = 72 sq m / 775 sq ft



This plan is for layout guidance only. Not drawn to scale unless stated. Windows and door openings are approximate. Whilst every care is taken in the preparation of this plan, please check all dimensions, shapes and compass bearings before making any decisions reliant upon them. (ID723133)



Important Notice Savills, its clients and any joint agents give notice that 1: They are not authorised to make or give any representations or warranties in relation to the property either here or elsewhere, either on their own behalf or on behalf of their client or otherwise. They assume no responsibility for any statement that may be made in these particulars. These particulars do not form part of any offer or contract and must not be relied upon as statements or representations of fact. 2: Any areas, measurements or distances are approximate. The text, photographs and plans are for guidance only and are not necessarily comprehensive. It should not be assumed that the property has all necessary planning, building regulation or other consents and Savills have not tested any services, equipment or facilities. Purchasers must satisfy themselves by inspection or otherwise. 20210118PYTN

