



A superb halls-adjoining period house in Wimbledon Town

Russell Road, Wimbledon, London, SW19

Freehold



**Superb entertaining space • Generous garden • Chain free
• Fantastic location • Three double bedrooms • Directly
opposite St Mary's RC Primary school**

Local Information

Russell Road is a popular residential street in the heart of Wimbledon town just 800m from the train station and town amenities. Wimbledon rail station (17 minutes to Waterloo) and underground District line and South Wimbledon underground Northern line provide easy access to central London. The house is opposite St Mary's RC Primary school.

Source of distances Google
Pedometer

Source of times www.tfl.gov.uk
All measurements are
approximate.

About this property

A beautifully presented three bedroom family house located in the very popular Ministers area of Wimbledon in the heart of Wimbledon Town.

The property is arranged across three floors and offers well-balanced accommodation for family living and entertaining.

On the ground floor to the rear is a wonderful extended family kitchen/dining room which benefits from abundance of natural light and offers an extensive range of units and cupboards, fully integrated appliances and a large kitchen island. Bi folding doors extend onto a private, landscaped rear

garden. To the front is a generous reception room. The house also has a downstairs cloakroom.

Upstairs, on the first floor there are two double bedrooms and a family bathroom. The main bedroom is located on the top floor with a stylish en suite bathroom. The house features pretty shutters on the front windows.

Tenure

Freehold

Local Authority

Merton

Energy Performance

EPC Rating = D

Viewing

All viewings will be accompanied and are strictly by prior arrangement through Savills Wimbledon Office.

Telephone: +44 (0) 20 8971 8111.





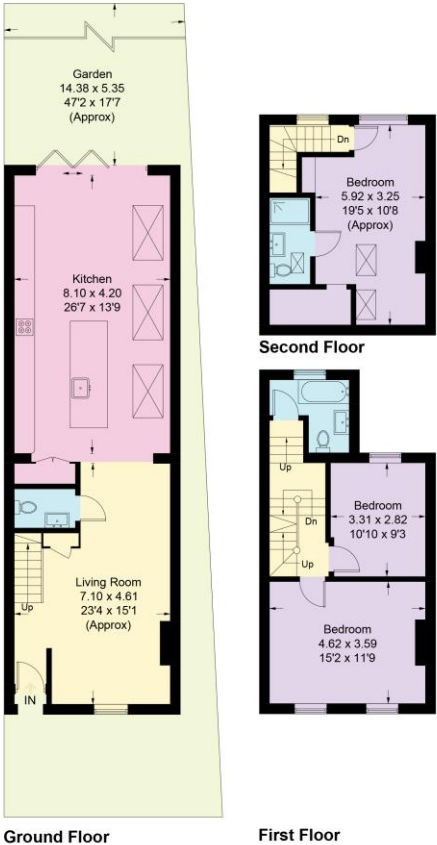
Russell Road, Wimbledon, London, SW19
Gross Internal Area 1477 sq ft, 137.2 m²

Dan Miller
Wimbledon
+44 (0) 20 8971 8111
dan.miller@savills.com

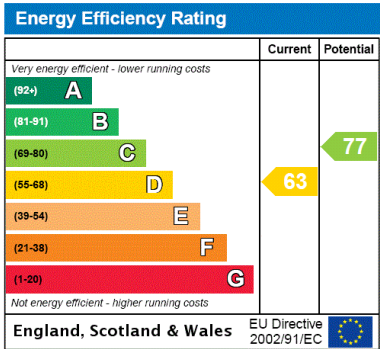


Russell Road, SW19

Approximate Gross Internal Area = 137.3 sq m / 1477 sq ft



This plan is for layout guidance only. Not drawn to scale unless stated. Windows and door openings are approximate. Whilst every care is taken in the preparation of this plan, please check all dimensions, shapes and compass bearings before making any decisions reliant upon them. (ID664456)



Important Notice Savills, its clients and any joint agents give notice that 1: They are not authorised to make or give any representations or warranties in relation to the property either here or elsewhere, either on their own behalf or on behalf of their client or otherwise. They assume no responsibility for any statement that may be made in these particulars. These particulars do not form part of any offer or contract and must not be relied upon as statements or representations of fact. 2: Any areas, measurements or distances are approximate. The text, photographs and plans are for guidance only and are not necessarily comprehensive. It should not be assumed that the property has all necessary planning, building regulation or other consents and Savills have not tested any services, equipment or facilities. Purchasers must satisfy themselves by inspection or otherwise. 20200928PYTN

