



# A stunning three bedroom duplex apartment

**Downings House Southey Road SW19 1ND**

Share of Freehold





Beautiful school house conversion • Stunning open plan living • Three bedrooms • Two bathrooms • Private parking • Communal gym and sauna • Caretaker/porter

#### About this property

This grand three bedroom apartment is perfectly located to access all of the great local amenities that Wimbledon has to offer.

The property is split over two levels and features a stunning open plan kitchen-diner-reception room with high ceilings and superb entertaining space. There is a smart family bathroom, a light third bedroom and an abundance of cleverly designed storage also on the ground floor. On the top floor there are two bright and spacious double bedrooms including the master. The master bedroom has large wardrobes and a beautifully presented en-suite bathroom.

There is a caretaker/porter that looks after the building and there is access to the residents gym and sauna.

Basement access with further storage potential.

The property also comes with a share of the freehold and private parking.

#### Local Information

Southey Road is a popular residential street in the centre of Wimbledon. In the town there is a great selection of high street shops, restaurants, cafes, a cinema and the New Wimbledon Theatre.

Wimbledon rail station and South Wimbledon underground and Centre Court shopping are within 800m.

Close to Cycle Superhighway 7 for safe access to the City.

Wimbledon Village and Wimbledon Common are within walking distance, as well as a handful of local gardens, parks and sports facilities.

Source of times [www.tfl.gov.uk](http://www.tfl.gov.uk)  
Source of distances Google Pedometer.

#### Tenure

Share of Freehold

#### Local Authority

London Borough of Merton

EPC rating = F

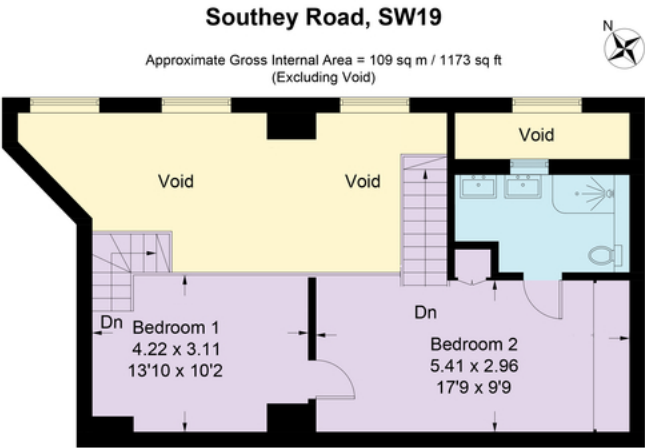
#### Viewing

Strictly by appointment with Savills

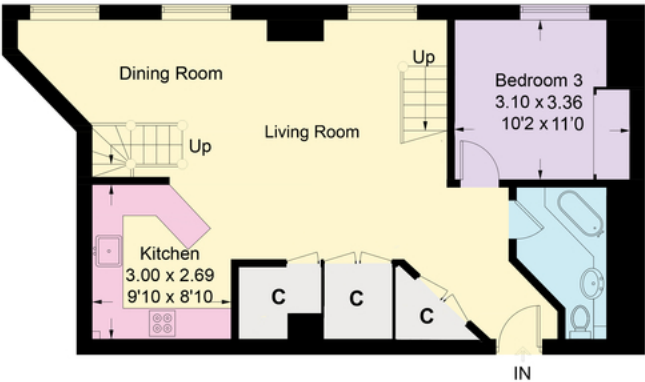






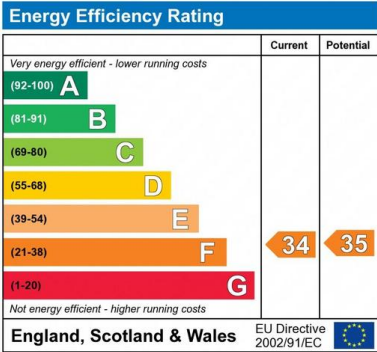


First Floor



Ground Floor

Illustration for identification purposes only.  
measurements are approximate, not to scale. (ID640488)



**Important notice:** Savills, their clients and any joint agents give notice that 1: They are not authorised to make or give any representations or warranties in relation to the property either here or elsewhere, either on their own behalf or on behalf of their client or otherwise. They assume no responsibility for any statement that may be made in these particulars. These particulars do not form part of any offer or contract and must not be relied upon as statements or representations of fact. 2: Any areas, measurements or distances are approximate. The text, photographs and plans are for guidance only and are not necessarily comprehensive. It should not be assumed that the property has all necessary planning, building regulation or other consents and Savills have not tested any services, equipment or facilities. Purchasers must satisfy themselves by inspection or otherwise. 02026020 Job ID: 142426 User initials: NLS