

CHAMBERS PARK HILL

WIMBLEDON, SW20



CHAMBERS PARK HILL

WIMBLEDON, SW20

A stunning three double bedroom apartment in the luxurious Wimbledon Hill Park.

This bright and spacious three double bedroom, three bathroom apartment is beautifully presented throughout and features a stylish open plan kitchen/diner/reception room which is great for entertaining and relaxing alike. The reception room opens up on to the private westerly facing balcony which is ideal for enjoying the afternoon sun.

Wimbledon Hill Park is set within 19 acres of parkland, providing green views and open space. There is a resident's gym, cinema and concierge on site.

The property is chain free and is an absolute must see for those looking for a large apartment close to Wimbledon Village and Common.

Accommodation

- ◆ Chain free
- ◆ Three double bedrooms
- ◆ New build guarantee
- ◆ Stunning open plan kitchen/dining/reception
- ◆ Balcony
- ◆ Parking space
- ◆ Communal gym and cinema
- ◆ Concierge

Additional Information

Energy Performance: A copy of the full Energy Performance Certificate is available upon request.

Viewing: Strictly by appointment with Savills.
Price on Application

Location

Wimbledon Hill Park is the recreation of the former Atkinson Morley Hospital site off Copse Hill, offering a variety of exceptional houses and luxury apartments by Berkeley Homes.

Wimbledon Village is within one mile with its delightful collection of shops and restaurants. The Common with its 1,200 acres of open space is around 800 metres and approaches the Village to create a sense of country living within London. Central London is around 8 miles distant and can be reached via the A3 or by rail from with Wimbledon mainline or Raynes Park (18 minutes) both accessed via the regular 200 bus route on Copse Hill. Locally are a number of excellent schools with The Rowans pre prep school 150 metres away and the highly sought after, Kings College School around 1000 metres distant.

Source of distances Google Pedometer

Source of times www.tfl.gov.uk

All measurements and distances are approximate.

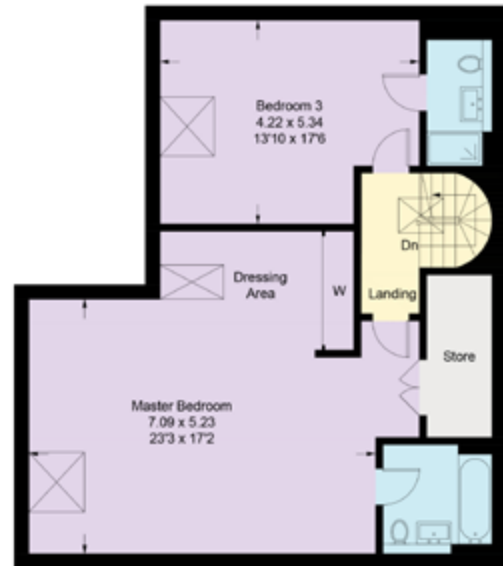


Floor Plans

Gross Internal Area (Approx) 158 Sq m/1,702.6 Sq ft



Third Floor



Fourth Floor



Savills Wimbledon

Dan Miller

wimbledon@savills.com

020 8971 8111

savills.co.uk



Savills, their clients and any joint agents give notice that: 1. They are not authorised to make or give any representations or warranties in relation to the property either here or elsewhere, either on their own behalf or on behalf of their client or otherwise. They assume no responsibility for any statement that may be made in these particulars. These particulars do not form part of any offer or contract and must not be relied upon as statements or representations of fact. 2. Any areas, measurements or distances are approximate. The text, images and plans are for guidance only and are not necessarily comprehensive. It should not be assumed that the property has all necessary planning, building regulation or other consents and Savills have not tested any services, equipment or facilities. Purchasers must satisfy themselves by inspection or otherwise. 20/03/05 GC