

# WIMBLEDON HILL ROAD

WIMBLEDON, SW19



savills

# WIMBLEDON HILL ROAD

WIMBLEDON, SW19

A contemporary three double bedroom penthouse apartment with two roof terraces offering outstanding views over the North Downs, situated between Wimbledon Village and the town centre.

The property is a well presented penthouse apartment at Hill Court, located towards the top of Wimbledon Hill Road. A great location for both Wimbledon Village and Wimbledon town centre.

The apartment benefits from air conditioning, as well as two roof terraces, which provide exceptional views over the picturesque North Downs.

The central hallway leads to three double bedrooms, with a staircase leading to a large kitchen reception with doors to the roof terrace.





## Location

Wimbledon Hill Road connects Wimbledon Village approx 150m away with the town centre approx 650m away with Wimbledon mainline station (London 17 min) and a variety of shopping options, cinemas, supermarkets and restaurants. Wimbledon Village offers a charming variety of bars, restaurants and boutiques with Wimbledon Common's 1200 acres of open space and ideal for riding, cycling, golf or walking.

Source of times [www.tfl.gov.uk](http://www.tfl.gov.uk)

Source of distances Google Pedometer

All measurements are approximate



## Accommodation

- ◆ Penthouse apartment
- ◆ Outstanding views
- ◆ Two roof terraces
- ◆ Three double bedrooms
- ◆ Wimbledon Village 150m
- ◆ EPC Rating - C

## Additional Information

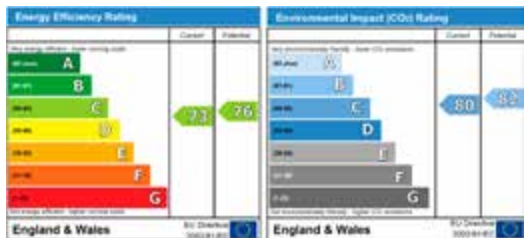
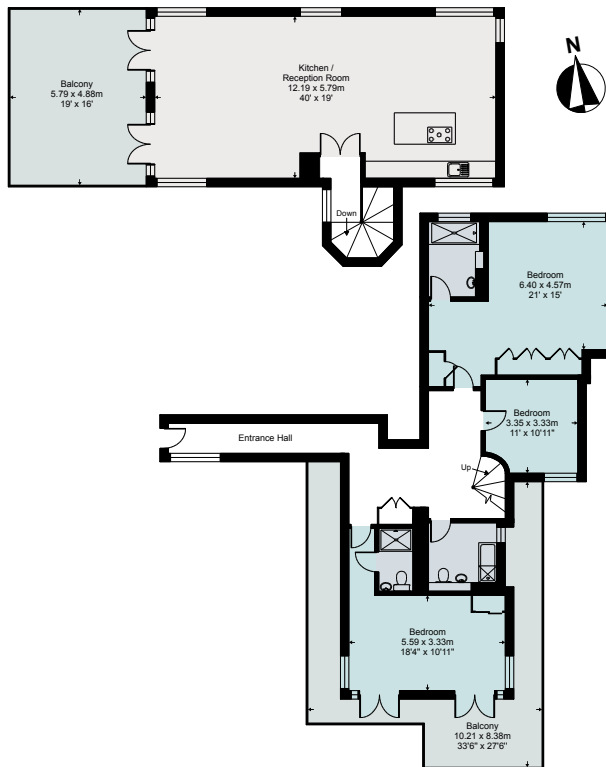
**Energy Performance:** A copy of the full Energy Performance Certificate is available upon request.

**Viewing:** Strictly by appointment with Savills.

Price on Application

## Floor Plans

Gross Internal Area (Approx) 182.17 Sq m/1,961 Sq ft



Savills Wimbledon

Ed Seth-Smith

wimbledon@savills.com

020 8971 8111

savills.co.uk



Savills, their clients and any joint agents give notice that: 1. They are not authorised to make or give any representations or warranties in relation to the property either here or elsewhere, either on their own behalf or on behalf of their client or otherwise. They assume no responsibility for any statement that may be made in these particulars. These particulars do not form part of any offer or contract and must not be relied upon as statements or representations of fact. 2. Any areas, measurements or distances are approximate. The text, images and plans are for guidance only and are not necessarily comprehensive. It should not be assumed that the property has all necessary planning, building regulation or other consents and Savills have not tested any services, equipment or facilities. Purchasers must satisfy themselves by inspection or otherwise. 20/08/03 SB