



FOUR BEDROOM MODERN FAMILY TOWNHOUSE

RYDON MEWS, WIMBLEDON SW19

Price on Application Freehold



FOUR BEDROOM TOWNHOUSE

RYDON MEWS WIMBLEDON SW19

Gated development ♦ Wimbledon Village
High Street 0.7 mile ♦ Four bedrooms ♦
Spacious family room ♦ Garage ♦ Private
off-street parking ♦ EPC rating = C

Situation

Rydon Mews is ideally located for access to Wimbledon Village just 0.7 miles away, local schools and transport facilities at Raynes Park and Wimbledon station (London Waterloo within 21 mins). Within Wimbledon are a number of highly sought after schools with Kings College School grounds adjacent to the property. The charming Wimbledon Village offers pretty boutiques, restaurants, bars and shops for everyday needs. Wimbledon Common (500m away) has approx 1200 acres of open space perfect for walking or riding with three popular golf courses within the Common.

Source of times www.tfl.gov.uk
Source of distances Google Pedometer
All measurements and distances are approximate.

Description

A superb four bedroom, three bathroom



townhouse on a wider than usual plot, set within a gated mews development built by Michael Shanley in 1999.

The property occupies arguably the most favoured position, being end of terrace and having the benefit of a wider plot and an adjoining garage.

Presented in excellent condition, the house has a spacious family/dining room on the ground floor featuring double doors opening out to the wide rear garden. The kitchen and W/C are also on this floor.

Three bedrooms (one en suite) and a family bathroom occupy the first floor, with a larger fourth en suite bedroom on the second floor.

The house benefits from private off-street parking on its own driveway and a garage is annexed to the property along with gated side access to the garden.

In addition there is guest parking, and also a communal garden shared with the adjacent Kingholme House development.

Local Authority:

Merton

Viewing:

Strictly by appointment with Savills



Rydon Mews, SW19

Approximate Gross Internal Area Total = 159 sq m / 1712 sq ft

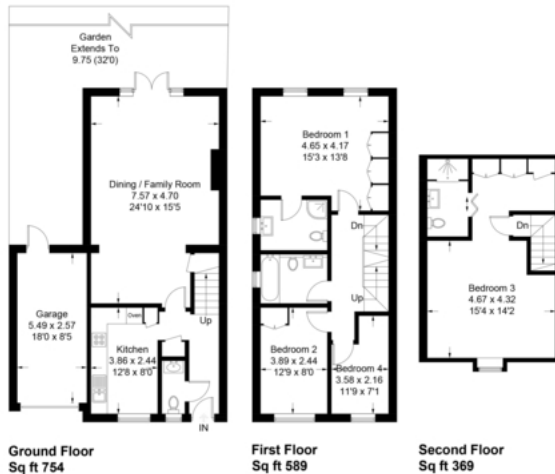


Illustration for identification purposes only, measurements are approximate, not to scale. Floorplans.sketch.com © 2019 (ID543563)

Savills Wimbledon
wimbledon@savills.com
020 8971 8111

savills.co.uk

Important notice: Savills, their clients and any joint agents give notice that **1:** They are not authorised to make or give any representations or warranties in relation to the property either here or elsewhere, either on their own behalf or on behalf of their client or otherwise. They assume no responsibility for any statement that may be made in these particulars. These particulars do not form part of any offer or contract and must not be relied upon as statements or representations of fact. **2:** Any areas, measurements or distances are approximate. The text, photographs and plans are for guidance only and are not necessarily comprehensive. It should not be assumed that the property has all necessary planning, building regulation or other consents and Savills have not tested any services, equipment or facilities. Purchasers must satisfy themselves by inspection or otherwise. 91025031 Job ID: 131594 User initials: pm

