

SELHURST CLOSE

WIMBLEDON, SW19



savills

SELHURST CLOSE

WIMBLEDON, SW19

A stunning two double bedroom apartment close to Wimbledon Village and Common.

This superb apartment opposite Wimbledon Common has recently been refurbished throughout to a high standard. The property features a large reception room with a smart open plan kitchen, two spacious double bedrooms, two newly installed bathrooms and an impressive private balcony facing Wimbledon Common. The property is chain free and also has a private parking space.

Location

Selhurst Close is located just off Park Side opposite Wimbledon Common with its 1,200 approx acres of open land, ideal for walking, riding and cycling. There are also three popular golf clubs within the Common. Wimbledon Village with a charming collection of shops, restaurants and bars is around 1.3 miles away with access provided via the 93 bus route, which also provides a link to Wimbledon mainline station (London Waterloo approx 17 minutes) and Putney rain station and underground stations. Southfields is approx 0.8 miles away and provides a District line underground service into Central London. Source of times www.tfl.gov.uk
Source of distances Google Pedometer
All measurements are approximate.

Accommodation

- ♦ Recently refurbished throughout
- ♦ Impressive reception room and kitchen
- ♦ Two double bedrooms
- ♦ Two bathrooms
- ♦ Private balcony
- ♦ Chain free
- ♦ Parking space

Additional Information

Energy Performance: EPC rating = B

A copy of the full Energy Performance Certificate is available upon request.

Viewing: Strictly by appointment with Savills.
Price on Application

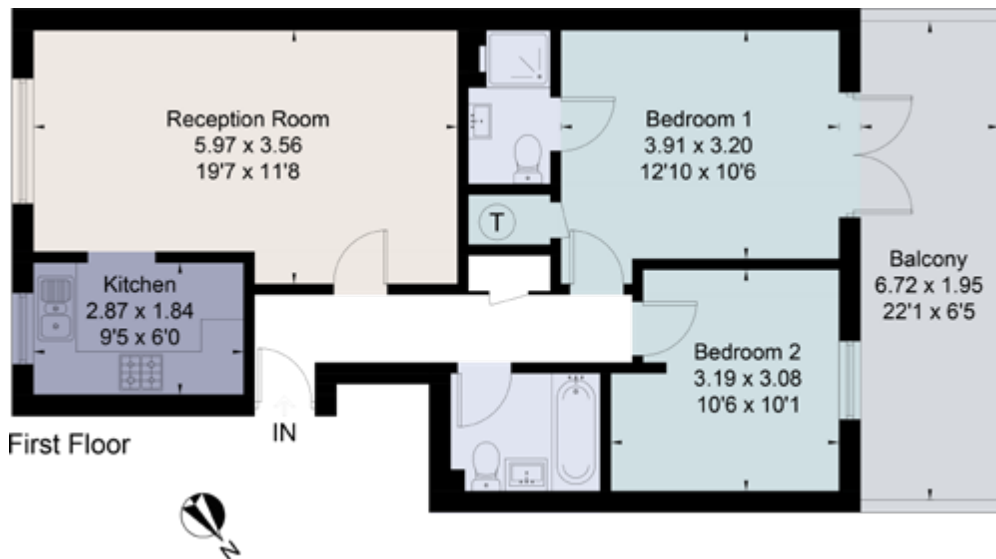


Floor Plans

Gross Internal Area (Approx) 64.6 Sq m/64.6 Sq ft

Balcony Area 13.1 Sq m/141 Sq ft

Including limited use area 0.3 Sq m/3 Sq ft



Savills Wimbledon

Dan Miller

wimbledon@savills.com

020 8971 8111

savills.co.uk



Savills, their clients and any joint agents give notice that: 1. They are not authorised to make or give any representations or warranties in relation to the property either here or elsewhere, either on their own behalf or on behalf of their client or otherwise. They assume no responsibility for any statement that may be made in these particulars. These particulars do not form part of any offer or contract and must not be relied upon as statements or representations of fact. 2. Any areas, measurements or distances are approximate. The text, images and plans are for guidance only and are not necessarily comprehensive. It should not be assumed that the property has all necessary planning, building regulation or other consents and Savills have not tested any services, equipment or facilities. Purchasers must satisfy themselves by inspection or otherwise. 20/06/29 GC