



SOUTHSIDE HOUSE

WOODHAYES ROAD
WIMBLEDON VILLAGE, SW19



SOUTHSIDE HOUSE

A wonderful opportunity to acquire this substantial detached house with a fascinating history, sitting in approximately 1 acre which has been in the same family for nearly 90 years.

Southside House is a unique landmark building on the edge of Wimbledon Common with over 14,500 sq ft of living space.

The earliest parts of the house were built in the early 17th Century for Robert Pennington, a friend of King Charles II. It was passed down the family generations and redecorated in William and Mary's style during the Georgian period. Behind the beautiful façade, the old rooms still feature much of the furniture brought from France by Hilda Pennington Mellor Munthe, who purchased the property in the 1930s.



At one point the house was 'redeveloped' into two separate dwellings. It wasn't until the 1950's that it was restored again into one dwelling and Hilda's son Malcolm lived there. He led a life of extraordinary danger during the Second World War. An agent of the S.O.E in Nazi-occupied Scandinavia and a veteran of Anzio, Major Munthe retreated to Southside and restored the house and created its museum. The house includes a chapel, vaults and a stable.











The house is extremely private being well set back from the road, behind a brick wall and with in and out driveways, approached across a stunning cobble courtyard with ample parking for numerous cars.

The ground floor space is exceptional with five formal well proportioned reception rooms with stunning views over the gardens. The upper floors are loosely divided into apartments but could easily be returned to ten plus bedrooms.

Southside currently houses a remarkable collection of art, photographs and antiques preserving a wealth of family stories from the Penningtons, as well as from doctor and author Axel Munthe, Hilda Pennington's husband, whose book *The Story of San Michele* remains amongst the ten best sellers of the 20th century. The house has associations with Queen Natalie of Serbia, the Duke of Wharton and Lady Hamilton.

Southside's garden is a haven of woodland wilderness, follies and water features with wonderful wildlife including woodpeckers, tawny owls, newts and toads.

Currently, Southside is open to the public hosting concerts, lectures, educational activities, workshops and literary evenings. The magical atmosphere of the house has offered inspiration to students, artists and filmmakers, as well as to local residents and visitors from all over the UK and abroad.



Southside House is opposite the charming Crooked Billet and adjacent to West Side Common, one of the most sought after locations in Wimbledon Village. Wimbledon Common provides 1,200 acres to enjoy. The property is also conveniently located close to the heart of Wimbledon Village with its cafe society, restaurants and boutiques. Cannizaro House and Park is within 200m. Leisure facilities in the area include several renowned clubs for enthusiasts of golf, riding and of course tennis.

Wimbledon station in the town provides fast overground and underground District line connections to central London (Waterloo 17 minutes) and to the south of England.

Some of London's finest schools are in close proximity with Wimbledon High for Girls in the town and Kings College School nearby.

Source of times www.tfl.gov.uk
Source of distances Google Pedometer
All measurements are approximate

Impressive history

Galleried reception hall

Five ground floor reception rooms

10-13 bedrooms

Chapel

Six bathroom/shower rooms

Stables

Storerooms and vaults

Beautiful secluded gardens

1 acre approx

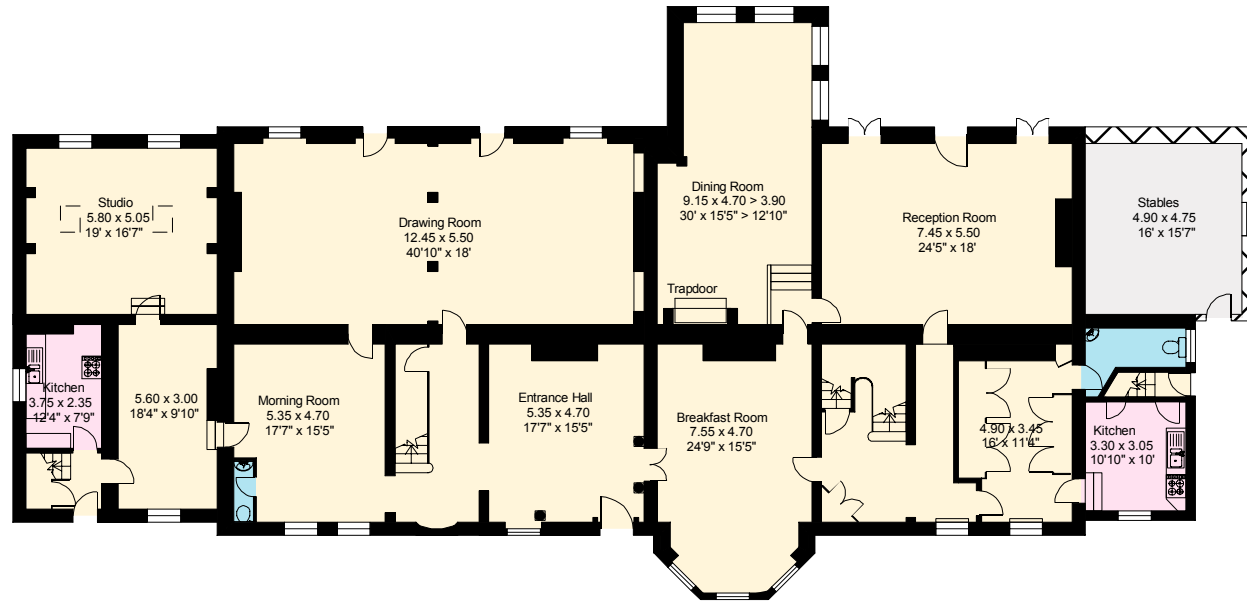
Freehold

Local Authority: London Borough of Merton



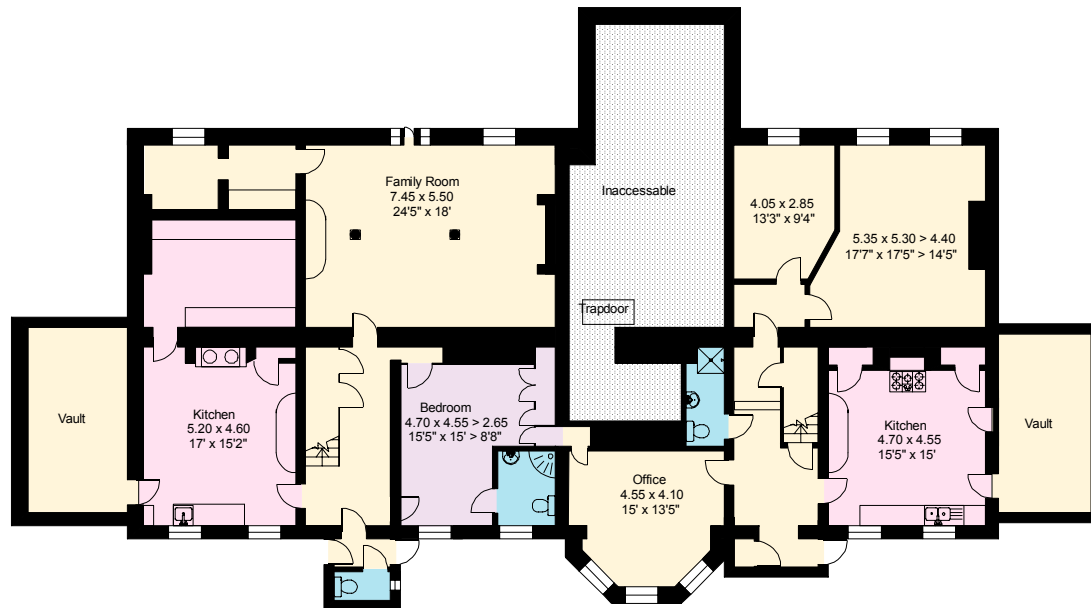
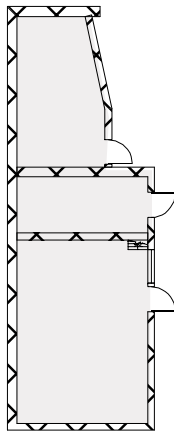
Promap
LANDMARK INFORMATION

Ordnance Survey Crown Copyright 2021. All rights reserved.
Licence number 100022432.
Plotted Scale - 1:1750. Paper Size - A4



Front Garden / Parking
50' x 134'6"
15.25 x 41.00

Ground Floor



Lower Ground Floor

SOUTHSIDE HOUSE

WOODHAYES ROAD

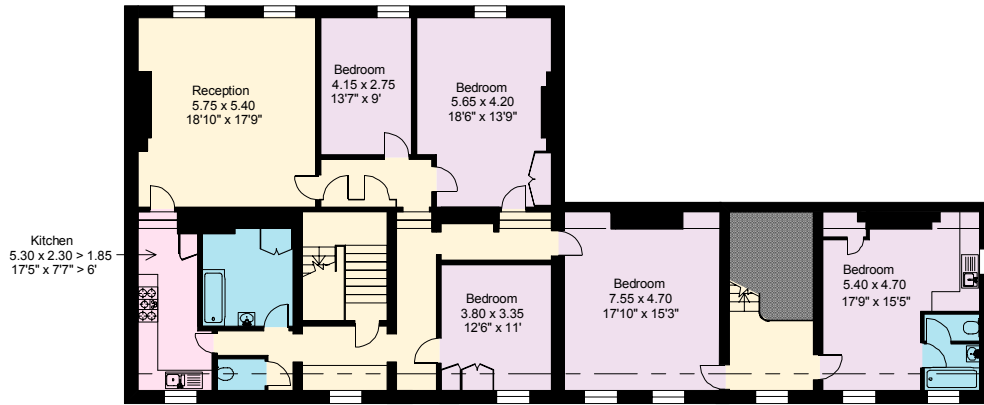
WIMBLEDON VILLAGE, SW19

Gross internal area (approx.)

1,358.2 sq.m. (14,620 sq.ft.)

Plus loft storage **95.6 sq.m. (1,030 sq.ft.)**

Total area shown on plan **1,453.8 sq.m. (15,650 sq.ft.)**



Second Floor



First Floor

Garden
85.00 x 39.45
278'10" x 129'5"



Important notice Savills, its clients and any joint agents give notice that 1: They are not authorised to make or give any representations or warranties in relation to the property either here or elsewhere, either on their own behalf or on behalf of their client or otherwise. They assume no responsibility for any statement that may be made in these particulars. These particulars do not form part of any offer or contract and must not be relied upon as statements or representations of fact. 2: Any areas, measurements or distances are approximate. The text, photographs and plans are for guidance only and are not necessarily comprehensive. It should not be assumed that the property has all necessary planning, building regulation or other consents and Savills have not tested any services, equipment or facilities. Purchasers must satisfy themselves by inspection or otherwise. Brochure by Cactus Ltd 21/08/15 GC



Robin Chatwin
Savills
0208 971 8111
rchatwin@savills.com

