

ADELA AVENUE

MOTSPUR PARK, KT3

savills
FOR SALE
020 8971 6111

savills

ADELA AVENUE

MOTSPUR PARK KT3

A fully refurbished family house in Motspur Park with further potential to extend (STPP).

This super family house has been fully refurbished and decorated over the last few months. Arranged over two floors, there are three bedrooms, two of which are comfortable double bedrooms, a large through reception room, a modern bathroom and a striking kitchen. There is also potential to further enlarge this home by extending the rear and into the loft, subject to the usual planning constraints. The garden features lawn and a decking area. Parking is available on the road.



Accommodation

- ◆ Chain free
- ◆ Fully refurbished
- ◆ Decking in garden
- ◆ Double reception room
- ◆ Stylish new kitchen

Additional Information

Energy Performance: A copy of the full Energy Performance Certificate is available upon request.

Viewing: Strictly by appointment with Savills.
Price on Application



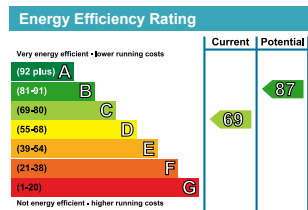
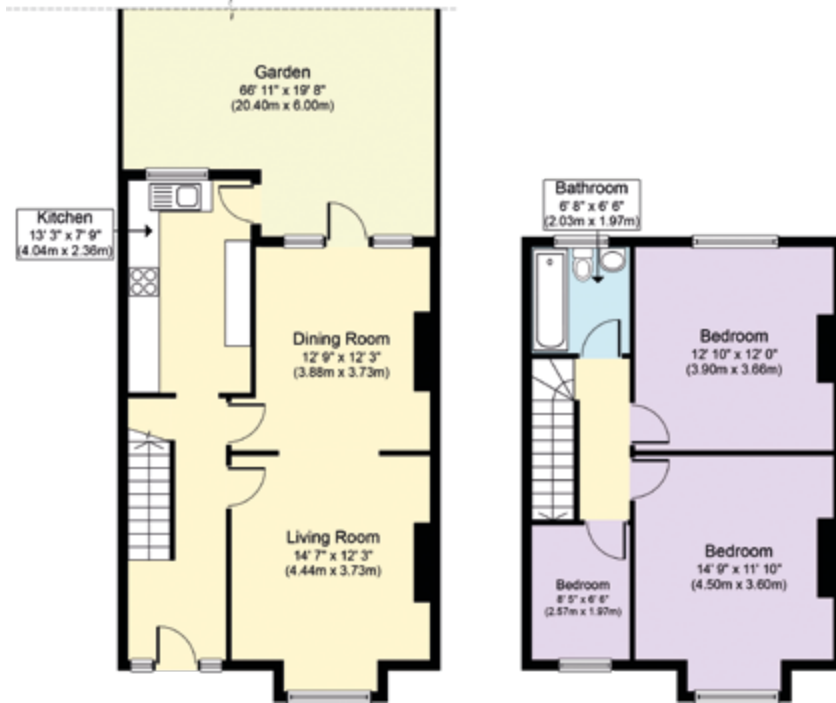
Location

Adela Avenue is a quiet residential street, ideally situated to access New Malden and Raynes Park. Motspur Park is the nearest railway station, approx 0.4 miles away, and provides fast and regular links into Central London (27 minutes to Waterloo.) Raynes Park railway is also nearby (1 mile away), taking you into Waterloo in around 21 minutes. Raynes Park High Street offers shops for everyday use, with Wimbledon town centre offering an extensive range of shopping facilities, bars and restaurants. Locally are a number of excellent schools including Coombe Boys and Raynes Park High. Source of distances Google Pedometer
Source of times www.tfl.gov.uk
All measurements are approximate.



Floor Plans

Gross Internal Area (Approx) 95 Sq m/1,022 Sq ft



Savills Wimbledon

Dan Miller

wimbledon@savills.com

020 8971 8111

savills.co.uk



Savills, their clients and any joint agents give notice that: 1. They are not authorised to make or give any representations or warranties in relation to the property either here or elsewhere, either on their own behalf or on behalf of their client or otherwise. They assume no responsibility for any statement that may be made in these particulars. These particulars do not form part of any offer or contract and must not be relied upon as statements or representations of fact. 2. Any areas, measurements or distances are approximate. The text, images and plans are for guidance only and are not necessarily comprehensive. It should not be assumed that the property has all necessary planning, building regulation or other consents and Savills have not tested any services, equipment or facilities. Purchasers must satisfy themselves by inspection or otherwise. 19/08/29 ML