



An exceptional two bedroom flat set in a classically

Oxford House, 52 Parkside, London, SW19

£3,750 pcm plus fees apply, Unfurnished
Available from 25.11.2020



- 2 bedrooms
- 2 reception rooms
- 2 bathrooms
- Ground floor
- Modern style
- Garden

About this property

Renovated to a high standard and offering luxury living throughout with spacious common parts, communal garden, private terrace and two underground parking spaces.

The property provides secure gated underground parking for two cars, private patio and beautifully and immaculately maintained communal gardens. There has been a wholesale renovation of the apartment and many of the fixtures and fittings are new and sourced from exclusive, bespoke suppliers.

This stunning property further benefits from CCTV, electric gates leading to the underground car parking and access to the building from the underground car park only by internal lift with code number.

The property comprises a spacious 24' reception room, kitchen/breakfast room, principal bedroom with wall-to-wall fitted wardrobes and en suite bathroom (with bath and shower). Second double bedroom with fitted wardrobes and second bathroom complete with bath and separate shower.

Directly overlooking Wimbledon Common the apartment is particularly well positioned, being on the ground floor and facing

south and west, which ensures light from the morning until the evening.

Local Information

The property is located opposite Wimbledon Common with its 1200 acres of open land, ideal for walking, riding or cycling. There are also three popular golf clubs within the Common. The property is in Wimbledon Village with access also available via the 93 bus route, which gives a link to Wimbledon and Putney rail stations. Wimbledon Village is known for its distinct Village feel with a pretty collection of shops restaurants and bars.

Source of times www.tfl.gov.uk
All measurements are approximate

Furnishing

Unfurnished

Local Authority

Merton
Council Tax Band = G

Energy Performance

EPC Rating = C

Viewing

All viewings will be accompanied and are strictly by prior arrangement through Savills Wimbledon Lettings Office.
Telephone: +44 (0) 20 8971 8100.





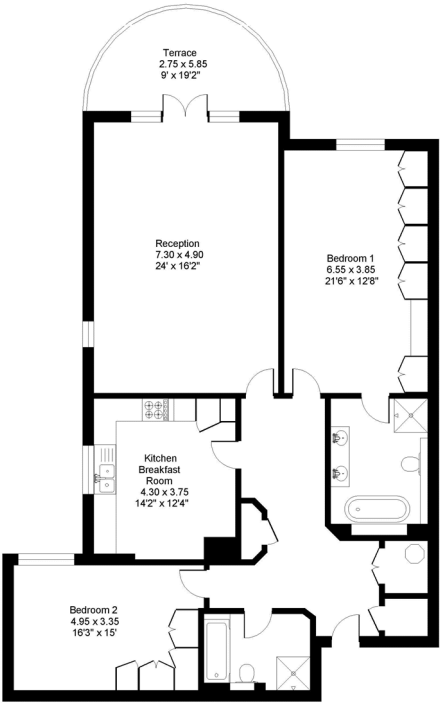
Oxford House, 52 Parkside, London, SW19
Gross Internal Area 1465 - 1465 sq ft, 136.1 - 136.1 m²

Charlotte Whitmarsh
Wimbledon Lettings
+44 (0) 20 8971 8100
charlotte.whitmarsh@savills.com

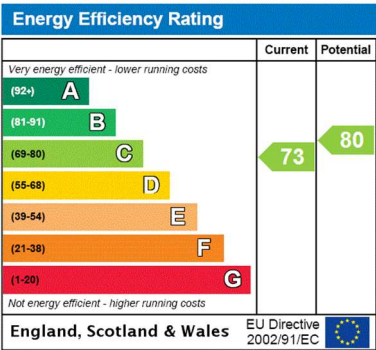


Oxford House, SW19

Gross internal area (approx.):
136.1 sq.m. (1465 sq.ft.)
For identification purposes only. Not to scale.
Floorplanners ©



Ground floor



Important notice Savills, their clients and any joint agents give notice that: 1. They are not authorised to make or give any representations or warranties in relation to the property either here or elsewhere, either on their own behalf or on behalf of their client or otherwise. They assume no responsibility for any statement that may be made in these particulars. These particulars do not form part of any offer or contract and must not be relied upon as statements or representations of fact. 2. Any areas, measurements or distances are approximate. The text, images and plans are for guidance only and are not necessarily comprehensive. It should not be assumed that the property has all necessary planning, building regulation or other consents and Savills have not tested any services, equipment or facilities. Prospective tenants must satisfy themselves by inspection or otherwise. Please note that the local area may be affected by aircraft noise, you should make your own enquiries regarding any noise within the area before you make any offer.

*There are different rules and fees for different tenancy types. For details of our fees and charges please go to Savills.co.uk/tenant-fees. For more detailed information read our applicant guide at savills.co.uk/applicant-guide.
Hard copy available on request. . 20201016RBGN

