



**\*SHORT LET\*** A spacious 2 double bedroom flat in a lovely period building.

**Stamford House, 23 West Side Common, London, SW19**

£4,500 pcm plus fees apply, Furnished, Part Furnished, Unfurnished  
Available from now





2 double bedrooms • Kitchen/breakfast room • Spacious reception • Shower room and separate WC • Stone and wooden floors throughout • Communal gardens • Off-street parking • Views over the common • Newly refurbished

#### About this property

A spacious 2 double bedroom flat in a lovely period building next door to the Common with communal gardens and parking.

The property comprises a kitchen/breakfast room, spacious reception, 2 double bedrooms, shower room, wooden floors throughout, fantastic communal gardens and off-street parking.

#### Furnishing

Furnished, Part Furnished, Unfurnished

#### Local Authority

Merton

#### Energy Performance

EPC Rating = D

#### Viewing

All viewings will be accompanied and are strictly by prior arrangement through Savills Wimbledon Lettings Office. Telephone: +44 (0) 20 8971 8100.







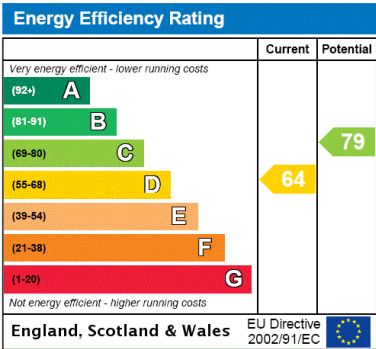
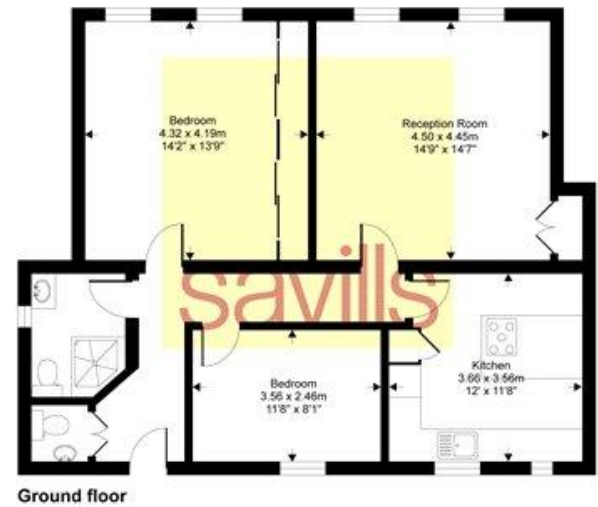
Stamford House, 23 West Side Common, London, SW19  
Gross Internal Area 860 sq ft, 80m<sup>2</sup>

Sam Miles  
Wimbledon Lettings  
+44 (0) 20 8971 8100  
sam.miles@savills.com

[onTheMarket.com](#) | [savills](#) | [savills.co.uk](#)

West Side Common, London, SW19

Gross internal floor area (approx):  
80 sq m / 860 sq ft  
For Identification only - Not to scale  
Niche Communications



**Important notice** Savills, their clients and any joint agents give notice that: 1. They are not authorised to make or give any representations or warranties in relation to the property either here or elsewhere, either on their own behalf or on behalf of their client or otherwise. They assume no responsibility for any statement that may be made in these particulars. These particulars do not form part of any offer or contract and must not be relied upon as statements or representations of fact. 2. Any areas, measurements or distances are approximate. The text, images and plans are for guidance only and are not necessarily comprehensive. It should not be assumed that the property has all necessary planning, building regulation or other consents and Savills have not tested any services, equipment or facilities. Prospective tenants must satisfy themselves by inspection or otherwise. Please note that the local area may be affected by aircraft noise, you should make your own enquiries regarding any noise within the area before you make any offer.

\*There are different rules and fees for different tenancy types. For details of our fees and charges to go to [Savills.co.uk/tenant-fees](#). For more detailed information read our applicant guide at [savills.co.uk/applicant-guide](#).  
Hard copy available on request. . 20191126HELW

