

# CHELSEA CRESCENT

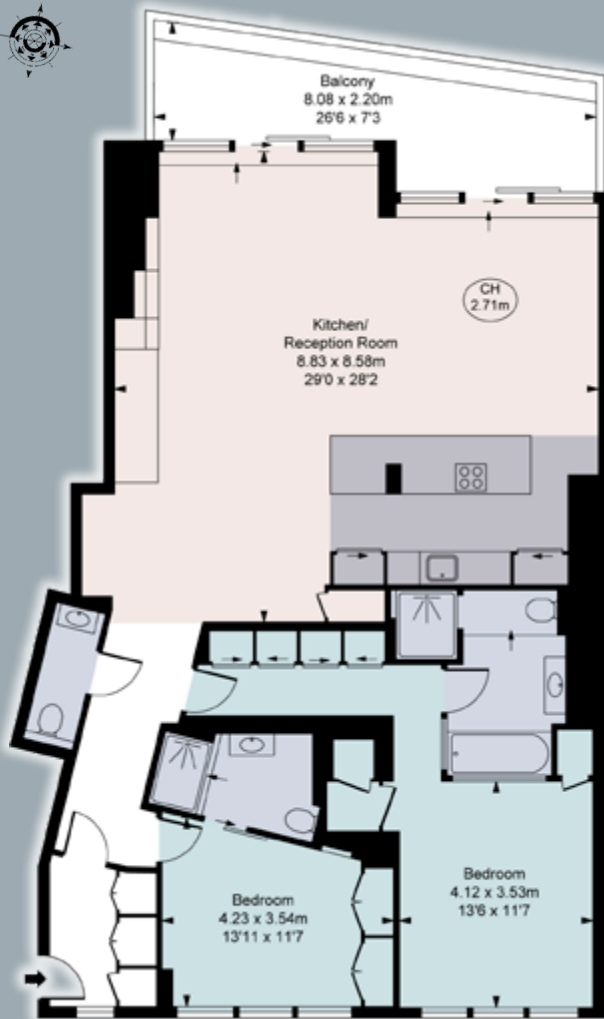
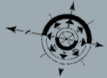
LONDON SW10

This stunning apartment in the prestigious Chelsea Harbour development has been beautifully refurbished throughout and enjoys spectacular views of the River Thames.

Accommodation comprises a spacious open plan reception/ dining room and fully fitted modern kitchen, which is ideal for entertaining and opens up to a large balcony overlooking the river. The principle bedroom is complete with built in wardrobes and beautifully appointed en suite bathroom. There is a second double bedroom, also with built in wardrobes and en suite shower room, as well as a separate guest WC. The apartment also comes with the added convenience of a parking space in the building's secure underground carpark.



Gross Internal Area (Approx.)  
141.67 Sq M - 1,525 Sq Ft



Third Floor



Chelsea Harbour is an iconic riverside development arranged around a picturesque marina, close to the Kings Road. Residents will benefit from excellent on site security and porter service, as well as proximity to the leisure facilities in the popular Chelsea Harbour hotel.

Imperial Wharf station (0.2 miles) offers regular services into Central London, whilst the popular Thames Clipper also services Chelsea Harbour pier and provides a pleasant commute into the City.

#### Accommodation and Amenities

- ◆ Open plan reception/dining room
- ◆ Modern integrated kitchen
- ◆ 2 double bedrooms
- ◆ 2 bath/shower rooms
- ◆ Guest WC
- ◆ Private balcony with views of the River Thames
- ◆ Secure underground parking
- ◆ Porter service
- ◆ EPC=B
- ◆ Leasehold
- ◆ London Borough of Hammersmith and Fulham



Viewing: Strictly by appointment with Savills.

#### Important notice

Savills, their clients and any joint agents give notice that:  
1: They are not authorised to make or give any representations or warranties in relation to the property either here or elsewhere, either on their own behalf or on behalf of their client or otherwise. They assume no responsibility for any statement that may be made in these particulars. These particulars do not form part of any offer or contract and must not be relied upon as statements or representations of fact. 2: Any areas, measurements or distances are approximate. The text, photographs and plans are for guidance only and are not necessarily comprehensive. It should not be assumed that the property has all necessary planning, building regulation or other consents and Savills have not tested any services, equipment or facilities. Purchasers must satisfy themselves by inspection or otherwise. 21/9/9 SB

Savills Waterfront  
62-64 Battersea Bridge Road  
London SW11 3AG  
020 8877 4823  
[www.savills.co.uk/waterfront](http://www.savills.co.uk/waterfront)

