

HEPWORTH COURT, LONDON SW1W

Exceptional apartment in the desirable Grosvenor Waterside development



This immaculate apartment is located on the 6th floor of Hepworth Court and offers well-proportioned accommodation which has been thoughtfully upgraded throughout by the current owners. The open plan reception room and fully fitted kitchen is ideal for entertaining, with sliding doors leading through to a separate dining area, which can also be used as a third bedroom, if desired. The generous principal bedroom is equipped with dressing area and beautifully appointed en suite bathroom, with separate bath and shower. The second bedroom also offers built in storage and an en suite, whilst there is a further guest shower room for the third bedroom. A generous balcony spans the width of the flat and has an attractive outlook over the dock.

Grosvenor Waterside is a popular development located on the north side of Chelsea Bridge, close to Sloane Square. Residents of Hepworth Court benefit from the development's excellent 24 hour concierge being located in their building. There is a private residents' gymnasium, on site grocery store and cafe, in addition to secure underground parking in which this flat has one space.

Grosvenor Waterside is well located for access to the rest of Central London with Victoria mainline and underground station (Victoria, Circle and District lines) only 0.8 miles away and Sloane Square underground Station (Circle and District Lines) just half a mile away. The Kings Road offers a wealth of excellent shops, cafes and restaurants, whilst the green open spaces of Battersea Park sit just the other side of Chelsea Bridge.

Accommodation and Amenities

Open plan kitchen/reception room ♦ 3 bedrooms ♦ 3 bath/shower rooms ♦ Generous balcony ♦ 24 hour concierge ♦ Secure parking ♦ Residents' gym

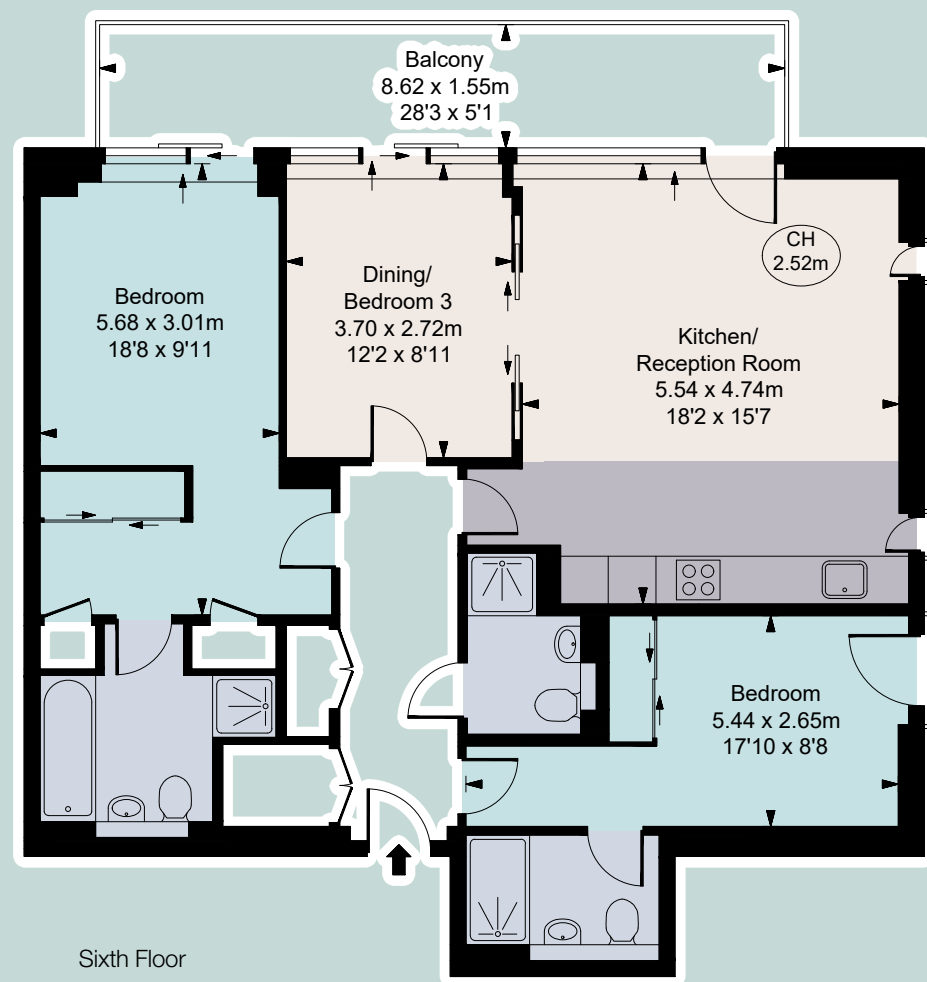
EPC=C

Leasehold 999 years from 2003 | City of Westminster





Gross Internal Area (Approx.)
94.67 Sq M - 1,019 Sq Ft



Viewing: Strictly by appointment with Savills.

Important notice

Savills, their clients and any joint agents give notice that: 1: They are not authorised to make or give any representations or warranties in relation to the property either here or elsewhere, either on their own behalf or on behalf of their client or otherwise. They assume no responsibility for any statement that may be made in these particulars. These particulars do not form part of any offer or contract and must not be relied upon as statements or representations of fact. 2: Any areas, measurements or distances are approximate. The text, photographs and plans are for guidance only and are not necessarily comprehensive. It should not be assumed that the property has all necessary planning, building regulation or other consents and Savills have not tested any services, equipment or facilities. Purchasers must satisfy themselves by inspection or otherwise. 20/07/08 GC



Savills Waterfront
62-64 Battersea Bridge Road
London SW11 3AG
020 8877 4823
www.savills.co.uk/waterfront

