

ALBION RIVERSIDE BUILDING | LONDON SW11



savills

ALBION RIVERSIDE BUILDING | LONDON SW11

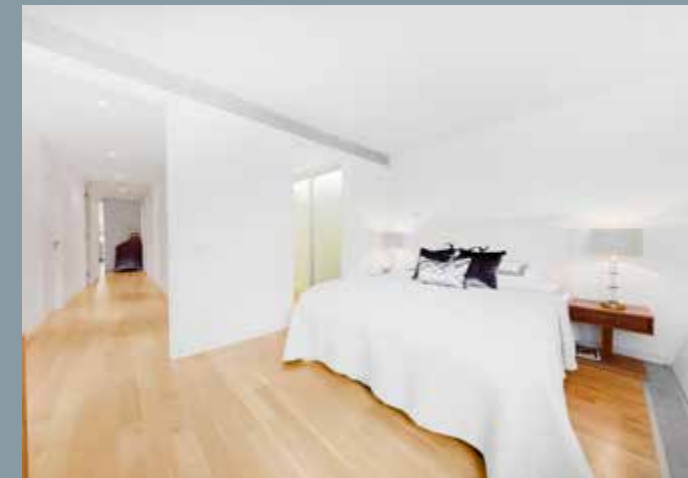
Albion Riverside occupies a desirable position on the Battersea riverside, between Battersea and Albert Bridges. Whilst being perfectly positioned for access to Battersea Park and the local restaurants and cafes on Parkgate Road and Battersea Square, it is also just a short walk across either bridge from the amenities of the Kings Road.



This spacious two bedroom apartment is located in Albion Riverside, an iconic riverside building designed by renowned architect Sir Norman Foster. The open plan reception/dining room is ideal for entertaining with access to a generous balcony overlooking the beautiful landscaped gardens and River Thames, across to Chelsea Embankment. The semi-separate kitchen is equipped with built in appliances and plenty of storage and there is a convenient separate utility room. The large master suite is complete with walk in dressing room and well-appointed en suite, with dual vanity and separate bath and shower. There is a second double bedroom which enjoys use of a separate guest bathroom. Residents of Albion Riverside benefit from excellent 24 hour security and concierge service, a private gymnasium and swimming pool, plus secure underground parking in which this flat has one space.

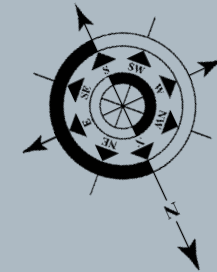
Accommodation

Reception/dining room ♦ Fully fitted kitchen ♦ 2 bedrooms ♦ 2 bathrooms ♦ Utility room ♦ Balcony ♦ River views ♦ 24 hour concierge ♦ Residents' pool & gym ♦ Secure parking space ♦ EPC=C
Wandsworth Borough Council ♦ Leasehold

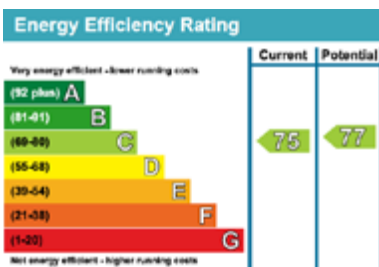




Gross Internal Area (Approx.)
116.59 sq.m. (1,255 sq.ft.)



Second Floor



Viewing: Strictly by appointment with Savills.

Important notice

Savills, their clients and any joint agents give notice that: 1: They are not authorised to make or give any representations or warranties in relation to the property either here or elsewhere, either on their own behalf or on behalf of their client or otherwise. They assume no responsibility for any statement that may be made in these particulars. These particulars do not form part of any offer or contract and must not be relied upon as statements or representations of fact. 2: Any areas, measurements or distances are approximate. The text, photographs and plans are for guidance only and are not necessarily comprehensive. It should not be assumed that the property has all necessary planning, building regulation or other consents and Savills have not tested any services, equipment or facilities. Purchasers must satisfy themselves by inspection or otherwise. 20/06/15 GC



Savills Waterfront
62-64 Battersea Bridge Road
London SW11 3AG
020 8877 4823
www.savills.co.uk/waterfront

