



Immaculate 2 bedroom apartment

Bramah House, Grosvenor Waterside, London, SW1W

Leasehold



Reception room • Fully fitted kitchen • 2 bedrooms • 2 bath/shower rooms • 2 balconies • Parking space • 24 hour concierge service

Local information

Grosvenor Waterside occupies a desirable position on the north side of Chelsea Bridge, just a short walk from the popular shops and eateries of Sloane Square and the Kings Road. Sloane Square underground station (0.6 miles) offers District and Circle Line services.

About this property

Located on the 8th floor, this immaculate apartment in Bramah House benefits from a sunny west facing aspect over the dock. Accommodation comprises an open plan reception room and fully fitted kitchen, which opens out to a balcony. The master bedroom is equipped with built in wardrobes and beautifully appointed en suite bathroom, in addition to access to a second private balcony. The second bedroom also has built in storage and enjoys use of a second guest shower room. Residents will benefit from excellent security and 24 hour concierge, as well as one underground parking space.

Tenure

Leasehold

Local Authority

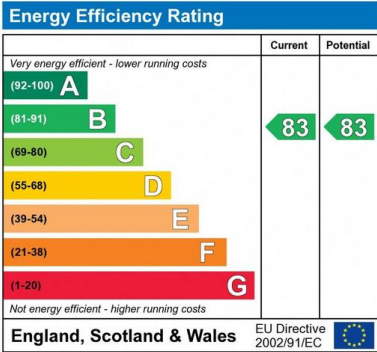
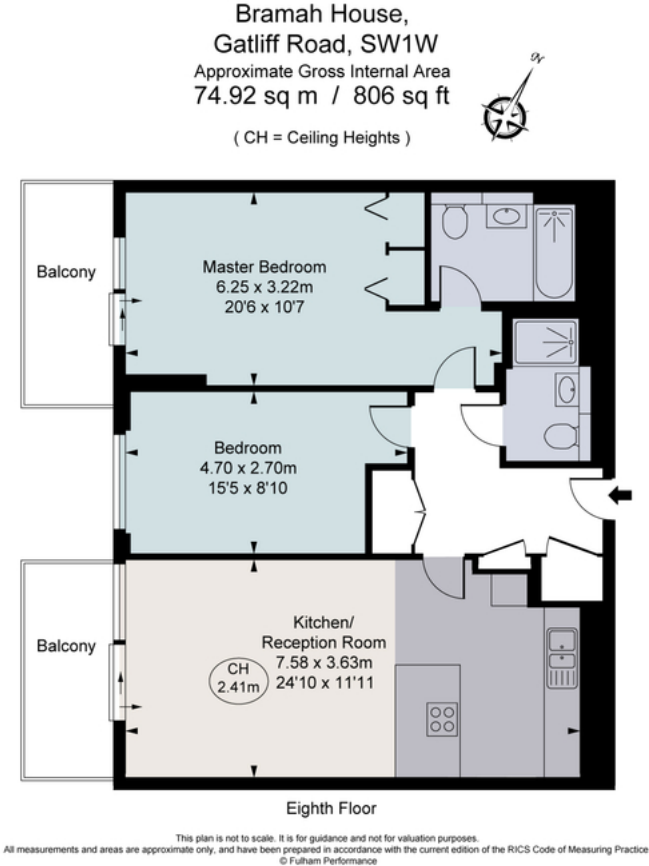
Westminster City Council

Bramah House, Grosvenor Waterside, London, SW1W



savills.co.uk

Fran Moynihan
Savills Waterfront
0208 877 4823
waterfrontlondon@savills.com



Important notice: Savills, their clients and any joint agents give notice that 1: They are not authorised to make or give any representations or warranties in relation to the property either here or elsewhere, either on their own behalf or on behalf of their client or otherwise. They assume no responsibility for any statement that may be made in these particulars. These particulars do not form part of any offer or contract and must not be relied upon as statements or representations of fact. 2: Any areas, measurements or distances are approximate. The text, photographs and plans are for guidance only and are not necessarily comprehensive. It should not be assumed that the property has all necessary planning, building regulation or other consents and Savills have not tested any services, equipment or facilities. Purchasers must satisfy themselves by inspection or otherwise. 91028091 Job ID: 134992 User Initials: SE

