

## AN EXCEPTIONAL TWO BEDROOM APARTMENT IN A DESIRABLE RIVERSIDE BUILDING

Riverwalk is situated on the banks of the River Thames in Westminster, a few minutes walk from Pimlico underground station which provides Victoria line services into Central London.

It is also ideally located for enjoying some of London's best cultural attractions, including the Tate Britain, Houses of Parliament, Westminster Abbey and the bustling South Bank.



This immaculate apartment is situated on the first floor of Riverwalk, an exclusive riverside development by Ronson Capital Partners. Finished to an exacting standard throughout, it offers an open plan reception room and state of the art Boffi kitchen with integrated Miele and Gaggenau appliances. The balcony enjoys views overlooking the beautiful landscaped gardens towards the River Thames. Both double bedrooms are complete with stunning built in wardrobes and luxuriously appointed en suite bath/shower rooms. The apartment is fitted with Crestron lighting and home automation system, comfort cooling and underfloor heating. Residents of Riverwalk will benefit from excellent 24 hour security and concierge service, as well as an on site gymnasium and yoga studio overlooking the river.

## Riverwalk, London SW1P







LONDON BOROUGH  
OF WESTMINSTER  
LEASEHOLD



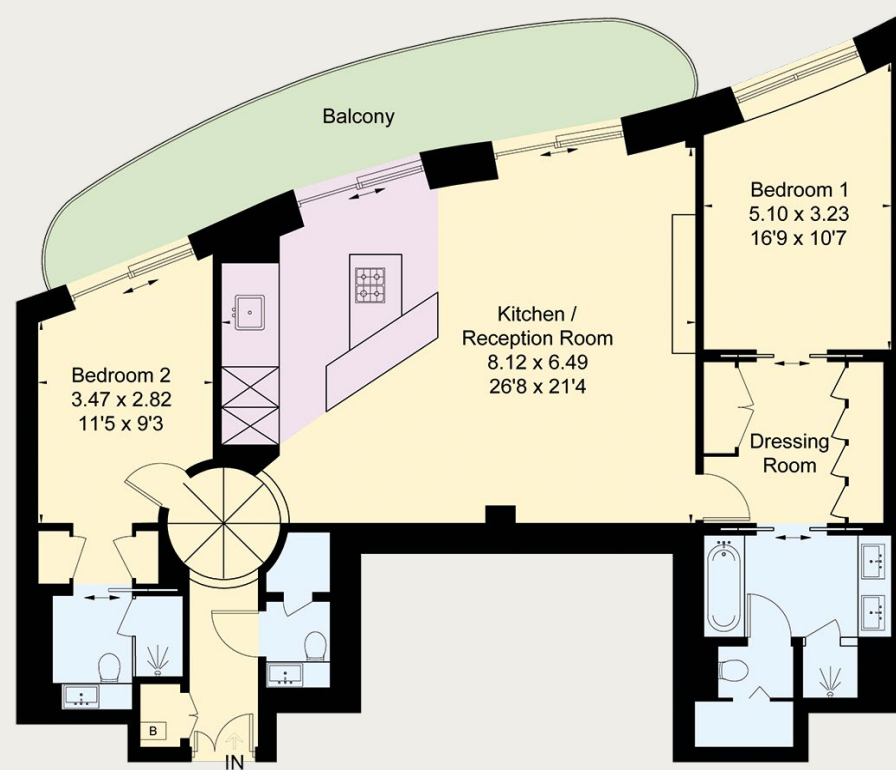
#### Energy Efficiency Rating

Very energy efficient - lower running costs	Current	Potential
(92 plus) <b>A</b>		
(81-91) <b>B</b>	87	87
(69-80) <b>C</b>		
(55-68) <b>D</b>		
(39-54) <b>E</b>		
(21-38) <b>F</b>		
(1-20) <b>G</b>		
Not energy efficient - higher running costs		

Viewing: Strictly by appointment with Savills.

**Important notice**  
Savills, their clients and any joint agents give notice that: 1: They are not authorised to make or give any representations or warranties in relation to the property either here or elsewhere, either on their own behalf or on behalf of their client or otherwise. They assume no responsibility for any statement that may be made in these particulars. These particulars do not form part of any offer or contract and must not be relied upon as statements or representations of fact. 2: Any areas, measurements or distances are approximate. The text, photographs and plans are for guidance only and are not necessarily comprehensive. It should not be assumed that the property has all necessary planning, building regulation or other consents and Savills have not tested any services, equipment or facilities. Purchasers must satisfy themselves by inspection or otherwise. 19/04/16 AP 365504

capital 020 8671 5448



First Floor

GROSS INTERNAL AREA (APPROX.)  
114.7 SQ M - 1,235 SQ FT  
INCLUDING LIMITED USE  
AREA OF  
0.8 SQ M - 9 SQ FT  
BALCONY  
19.9 SQ M - 214 SQ FT



Savills Waterfront  
62-64 Battersea Bridge Road  
London SW11 3AG  
020 3430 6900  
[www.savills.co.uk/waterfront](http://www.savills.co.uk/waterfront)

