

MONTEVETRO, LONDON SW11

Stunning riverside flat with generous sunny terrace



This beautifully presented apartment in the prestigious Montevetro Building is the epitome of riverside living, with a large decked terrace facing west over the landscaped gardens and River Thames. The open plan reception/dining room and fully fitted kitchen is ideal for entertaining, with floor to ceiling glass allowing for plenty of natural light and the fabulous views to be enjoyed throughout. The principal bedroom is equipped with built in wardrobes and a well-appointed en suite with separate bath and shower, whilst the second double bedroom also has fitted cupboards and use of a separate guest bathroom. Residents of Montevetro benefit from excellent 24 hour security and concierge service, private gymnasium and tennis court, in addition to secure underground parking in which this flat has a designated space.

Montevetro is an iconic building by renowned architect Richard Rogers, positioned on the banks of the River Thames close to Battersea Bridge. Whilst being ideally positioned to enjoy the charming cafes and restaurants of nearby Battersea Square, it is also a short walk from the amenities of the Kings Road and the green spaces of Battersea Park.

Accommodation and Amenities

Open plan reception room/kitchen ♦ 2 double bedrooms ♦ 2 bathrooms ♦ Generous terrace ♦ River views ♦ Secure parking ♦ 24 hour concierge

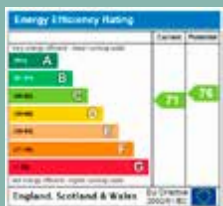
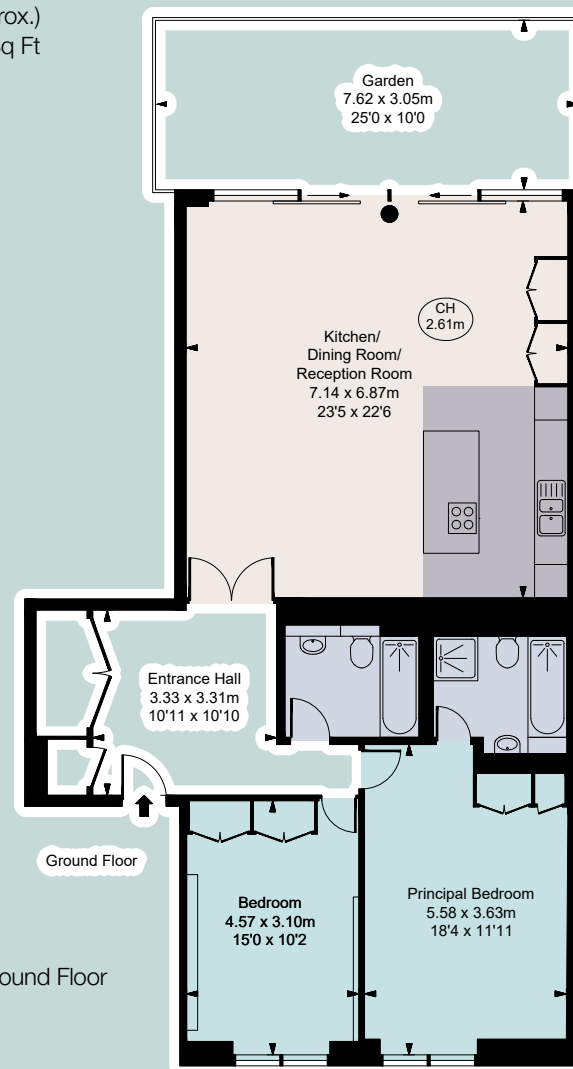
Residents' gym and tennis court ♦ EPC=C

Share of Freehold | London Borough of Wandsworth





Gross Internal Area (Approx.)
113.24 Sq M - 1,219 Sq Ft



Viewing: Strictly by appointment with Savills.

Important notice

Savills, their clients and any joint agents give notice that: 1: They are not authorised to make or give any representations or warranties in relation to the property either here or elsewhere, either on their own behalf or on behalf of their client or otherwise. They assume no responsibility for any statement that may be made in these particulars. These particulars do not form part of any offer or contract and must not be relied upon as statements or representations of fact. 2: Any areas, measurements or distances are approximate. The text, photographs and plans are for guidance only and are not necessarily comprehensive. It should not be assumed that the property has all necessary planning, building regulation or other consents and Savills have not tested any services, equipment or facilities. Purchasers must satisfy themselves by inspection or otherwise. 20/07/21 GC



Savills Waterfront
62-64 Battersea Bridge Road
London SW11 3AG
020 8877 4823
www.savills.co.uk/waterfront

