



# Admiral Court, Admiral Square, London, SW10 0UU

Spacious river facing apartment with large wrap around terrace



• Reception/dining room • Separate kitchen • Large terrace • 2 bedrooms • 2 bath/shower rooms • Secure parking • Porter • EPC rating: C

### About

An exceptional flat on located on the raised ground floor of this desirable portered building in Chelsea Harbour. The extremely bright reception room is ideal for entertaining, with stunning panoramic river views and French doors opening up to a large terrace, which traps the sun all day. There is a separate, modern kitchen with plenty of storage and two generous bedrooms, one of which has an en suite bathroom and the other has use of a separate guest shower room. The flat comes with the added convenience of secure underground parking.

### Local information

Admiral Square is located in the iconic Chelsea Harbour development which is arranged around a picturesque marina by the River Thames. It is well located for access to the rest of Central London via Overground services from Imperial Wharf, which connects to West Brompton (District Line) and Shepherd's Bush (Central Line). The Riverbus also runs services to the City from Chelsea Harbour Pier.

### Tenure

Leasehold

### Local authority

Hammersmith and Fulham

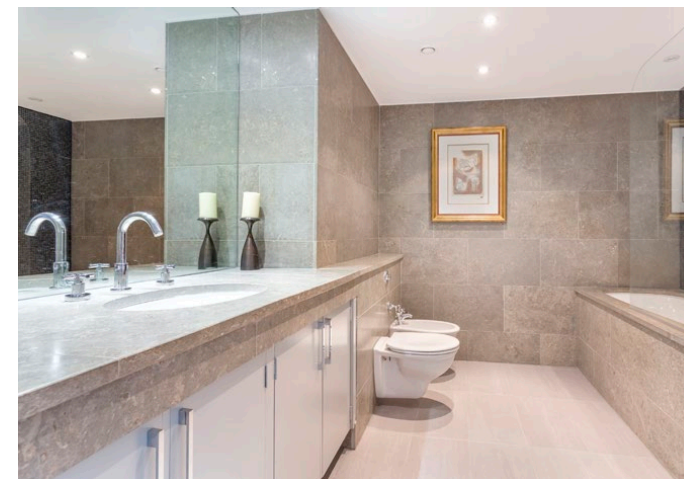
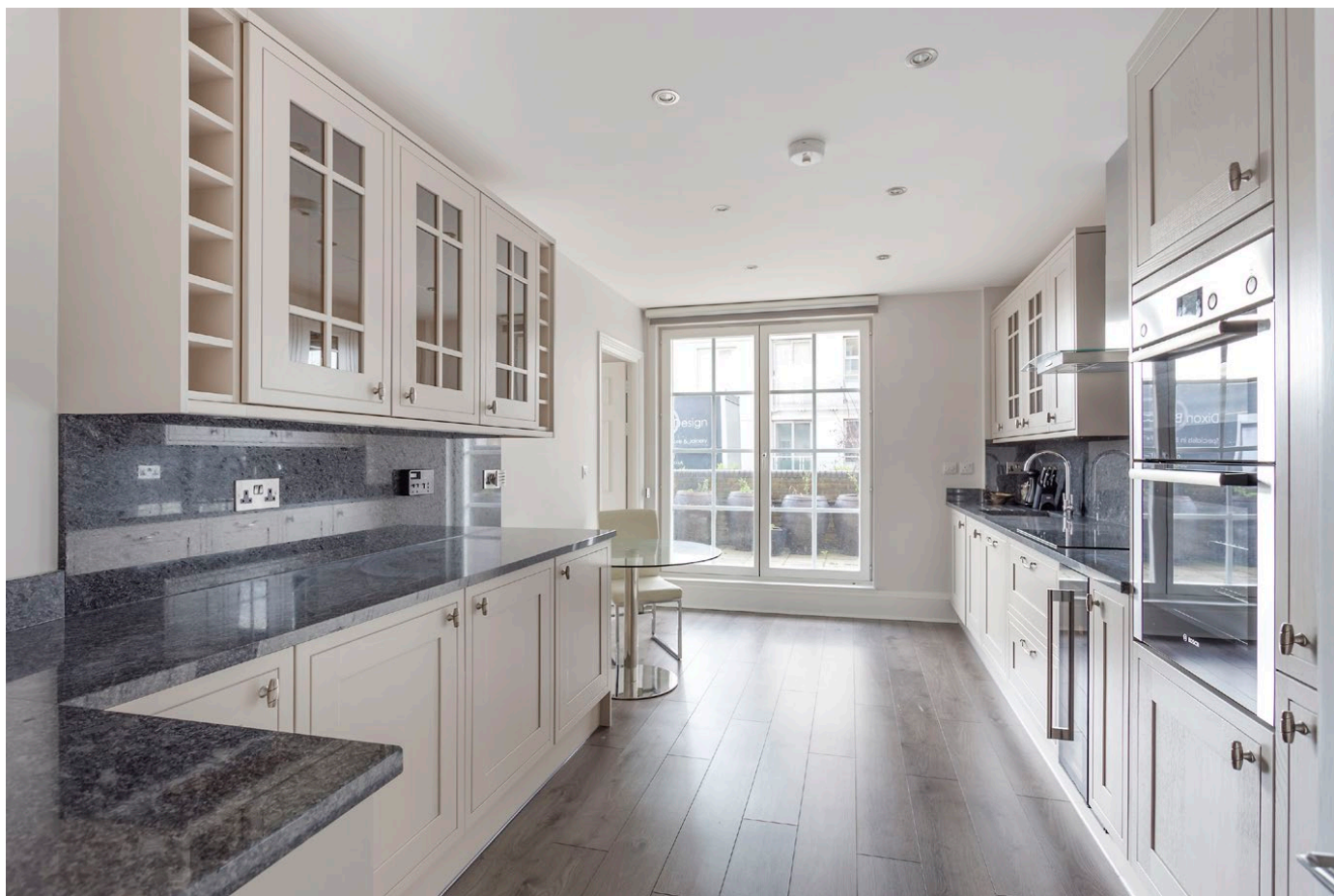
### Energy Performance

A copy of the full Energy Performance Certificate is available upon request.

### Viewing

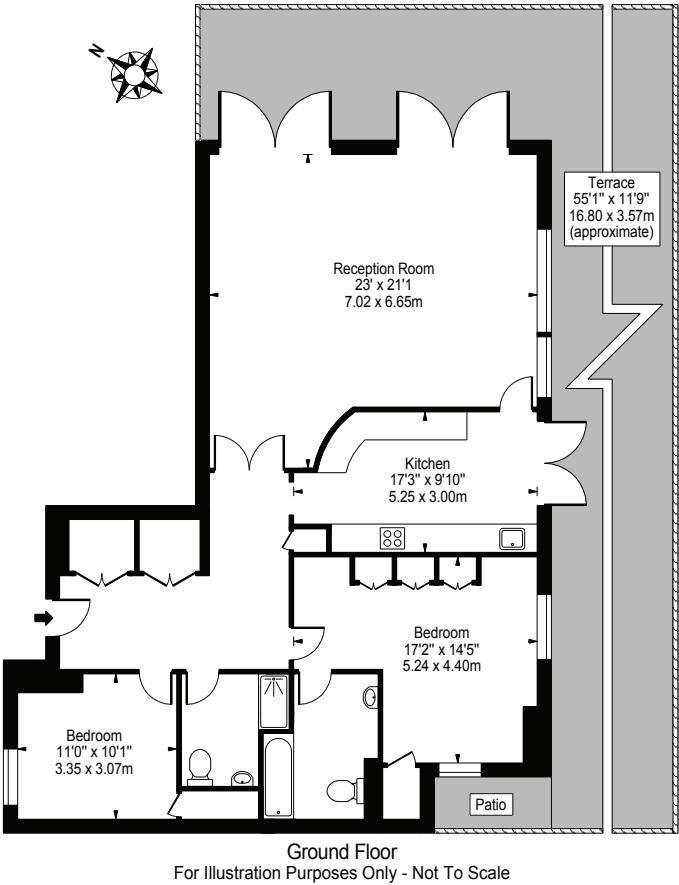
Strictly by appointment with Savills.

These photos were taken over six months ago.

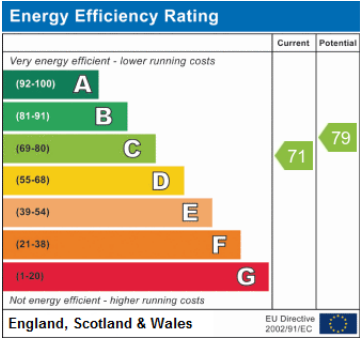




Admiral Court, Admiral Square, London, SW10 0UU  
Approximate Gross Internal Area 119.07 sq m / 1282 sq ft  
( CH = Ceiling Heights )



For identification only. Not to scale. © 25/03/2020



**Important notice** Savills, its clients and any joint agents give notice that 1: They are not authorised to make or give any representations or warranties in relation to the property either here or elsewhere, either on their own behalf or on behalf of their client or otherwise. They assume no responsibility for any statement that may be made in these particulars. These particulars do not form part of any offer or contract and must not be relied upon as statements or representations of fact. 2: Any areas, measurements or distances are approximate. The text, photographs and plans are for guidance only and are not necessarily comprehensive. It should not be assumed that the property has all necessary planning, building regulation or other consents and Savills have not tested any services, equipment or facilities. Purchasers must satisfy themselves by inspection or otherwise. Brochure by fulhamperformance.co.uk