

# LOMBARD WHARF

LONDON SW11

Spacious apartment with  
spectacular river and city  
views

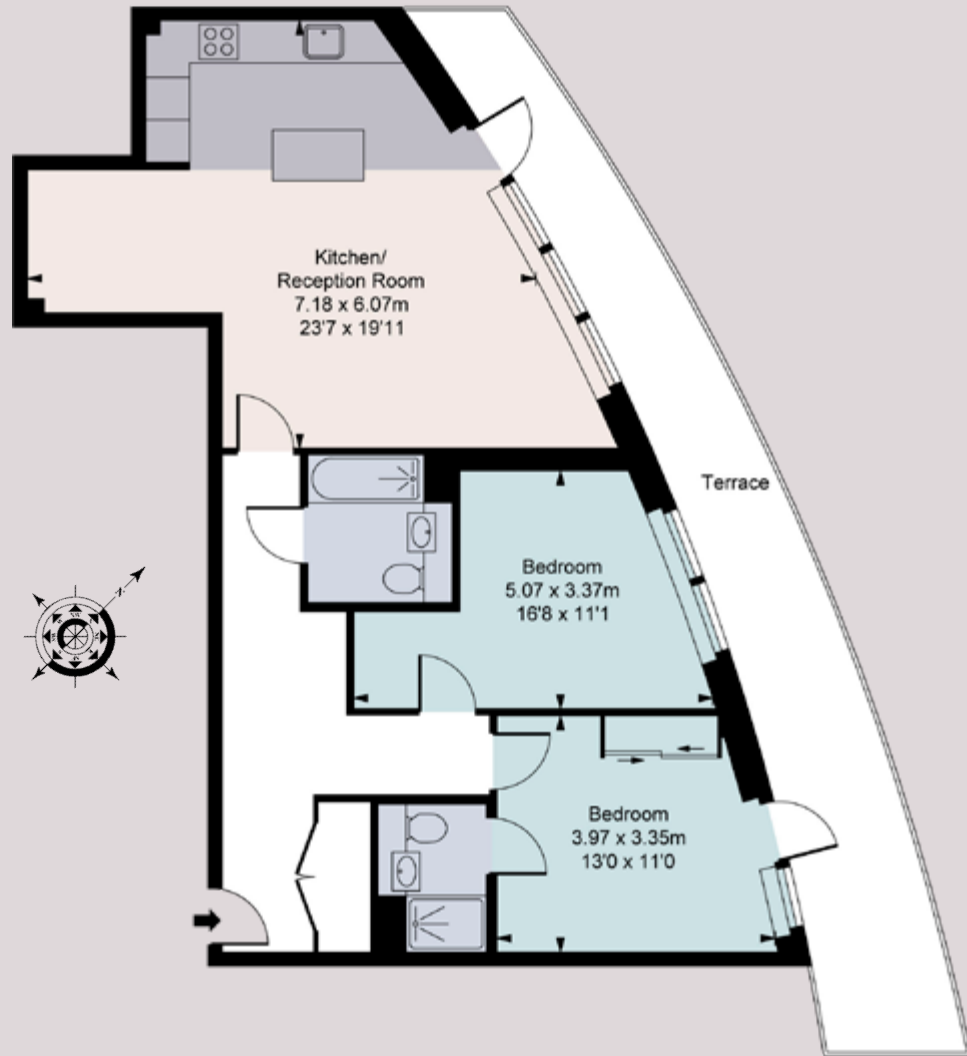
This exceptional two bedroom apartment is situated on the 23rd floor of Lombard Wharf, a desirable new riverside building on the banks of the Thames in Battersea. Accommodation is arranged over 880 sq ft and comprises an open plan reception room and fully integrated kitchen, equipped with AEG appliances and an abundance of storage.

The master suite is complete with a luxuriously appointed en suite shower room and built in wardrobes, whilst the second double bedroom has use of a separate guest bathroom. A generous terrace spans the length of the flat and offers spectacular uninterrupted views across London, including the river Thames, Battersea Power Station and the iconic City skyline. Residents of Lombard Wharf benefit from excellent 24 hour security and concierge service and a private gym.



Gross Internal Area (Approx.)  
81.71 Sq M - 880 Sq Ft

Lombard Wharf is one of the newest additions to the Battersea riverside, located close to the charming cafes and restaurants of Battersea Square. Clapham Junction (0.7miles) offers regular services into London Victoria and Waterloo, as well as out to Gatwick airport. There are numerous bus routes into Central London and the Riverbus also runs into the City from the nearby Plantation Wharf pier.



Twenty Third Floor

#### Accommodation and Amenities

- ◆ Reception room/kitchen
- ◆ 2 bedroom
- ◆ 2 bath/shower room
- ◆ Terrace
- ◆ Spectacular views
- ◆ 24 hour concierge
- ◆ Residents' gym
- ◆ EPC=B
- ◆ Leasehold
- ◆ London Borough of Wandsworth



Viewing: Strictly by appointment with Savills.

#### Important notice

Savills, their clients and any joint agents give notice that: 1: They are not authorised to make or give any representations or warranties in relation to the property either here or elsewhere, either on their own behalf or on behalf of their client or otherwise. They assume no responsibility for any statement that may be made in these particulars. These particulars do not form part of any offer or contract and must not be relied upon as statements or representations of fact. 2: Any areas, measurements or distances are approximate. The text, photographs and plans are for guidance only and are not necessarily comprehensive. It should not be assumed that the property has all necessary planning, building regulation or other consents and Savills have not tested any services, equipment or facilities. Purchasers must satisfy themselves by inspection or otherwise. 20/06/11 GC

Savills Waterfront  
62-64 Battersea Bridge Road  
London SW11 3AG  
020 8877 4823  
[www.savills.co.uk/waterfront](http://www.savills.co.uk/waterfront)

