



# Beautiful and bright 2 bedroom apartment

Carlyle Court, Chelsea Harbour, SW10

Leasehold



2 bedrooms • 2  
 bathrooms • 24 Hour  
 Concierge & Security •  
 Private Balcony •  
 Underground Parking •  
 Exclusive Riverside  
 Development • Residents  
 Gardens • Raised Ground  
 Floor

**Local information**

Chelsea Harbour is an iconic development arranged around a picturesque marina on the River Thames in Chelsea. Residents benefit from excellent on site porter service and secure underground parking, in which this flat has two designated spaces, as well as proximity to the spa facilities at the Chelsea Harbour hotel. The shops, bars and restaurants of the Kings Road are all within easy reach, whilst overground trains run from Imperial Wharf station. The Riverbus also stops at Chelsea Harbour Pier and provides a pleasant commute into the City.

**About this property**

This exceptional, bright, two bedroom, two bathroom apartment is located in the prestigious Chelsea Harbour development. The substantial reception room has access to a long balcony married with a modern semi open-plan kitchen, it makes for a great living space. The principal bedroom has built in storage, a changing area and en suite bathroom, whilst the second double bedroom also has built in wardrobes and has use of a separate guest bathroom.

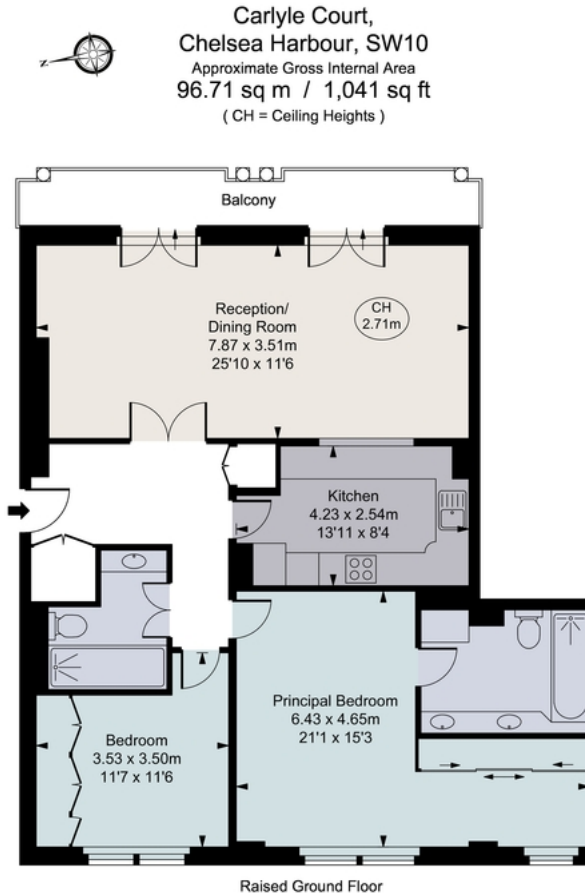
**Carlyle Court, Chelsea Harbour, SW10**



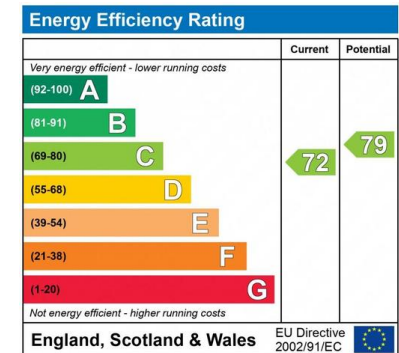
savills.co.uk

**Sales Team**

Savills Waterfront  
 020 8877 4823  
 waterfrontlondon@savills.com



This plan is not to scale. It is for guidance and not for valuation purposes. All measurements and areas are approximate only, and have been prepared in accordance with the current edition of the RICS Code of Measuring Practice. © Fulham Performance



**Important notice:** Savills, their clients and any joint agents give notice that 1: They are not authorised to make or give any representations or warranties in relation to the property either here or elsewhere, either on their own behalf or on behalf of their client or otherwise. They assume no responsibility for any statement that may be made in these particulars. These particulars do not form part of any offer or contract and must not be relied upon as statements or representations of fact. 2: Any areas, measurements or distances are approximate. The text, photographs and plans are for guidance only and are not necessarily comprehensive. It should not be assumed that the property has all necessary planning, building regulation or other consents and Savills have not tested any services, equipment or facilities. Purchasers must satisfy themselves by inspection or otherwise. 12021092 Job ID: 148375 User Initials: TO

