



A superb three bedroom split-level flat.

Herndon Road, London, SW18

Share of Freehold





Local Information

Herndon Road is ideally located close to the open space of Wandsworth Common and the amenities of the Southside Centre. There are many shops, bars and restaurants in the surrounding area. Wandsworth Town Mainline is only a few minutes walk away, with the station providing direct services to Waterloo and Clapham Junction. There are also numerous bus services. The area is well known for its selection of schools, with a great reputation locally.

About this property

Situated on the first and second floors of a Victorian terraced home is this beautifully presented three bedroom, split-level flat offering over 1000sqft of living and entertaining space.

The first floor is comprised of a spacious reception/dining room, a double bedroom, kitchen and the family bathroom. The reception/dining room is situated towards the front of the property and benefits from a pretty bay window and a sash window letting light flood in. The gas fireplace is flanked by built-in cabinetry and naturally high ceilings add to the feeling of space. The kitchen is located to the rear of the first floor and provides plenty of room for white goods and pantry space.

The second floor completes the property, holding the principal bedroom alongside a third double bedroom. All three bedrooms have built-in storage and are served by a family bathroom on the first floor fitted with a bath and overhead shower. It is of note that there is a sizable storage

cupboard on the second floor with access to eaves storage.

Tenure

Share of Freehold

Local Authority

Wandsworth

Council Tax

Band = D

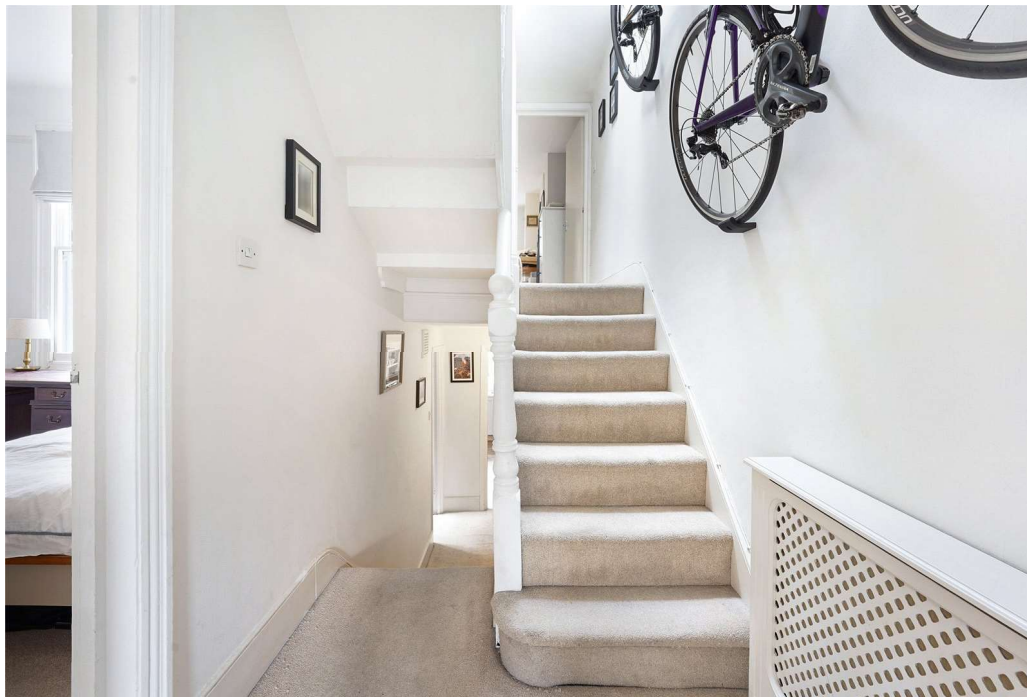
Energy Performance

EPC Rating = E

Viewing

All viewings will be accompanied and are strictly by prior arrangement through Savills Wandsworth Office.
Telephone:
+44 (0) 20 8877 1222.

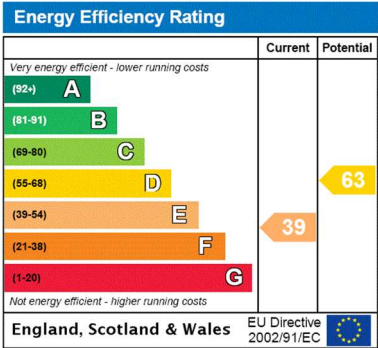
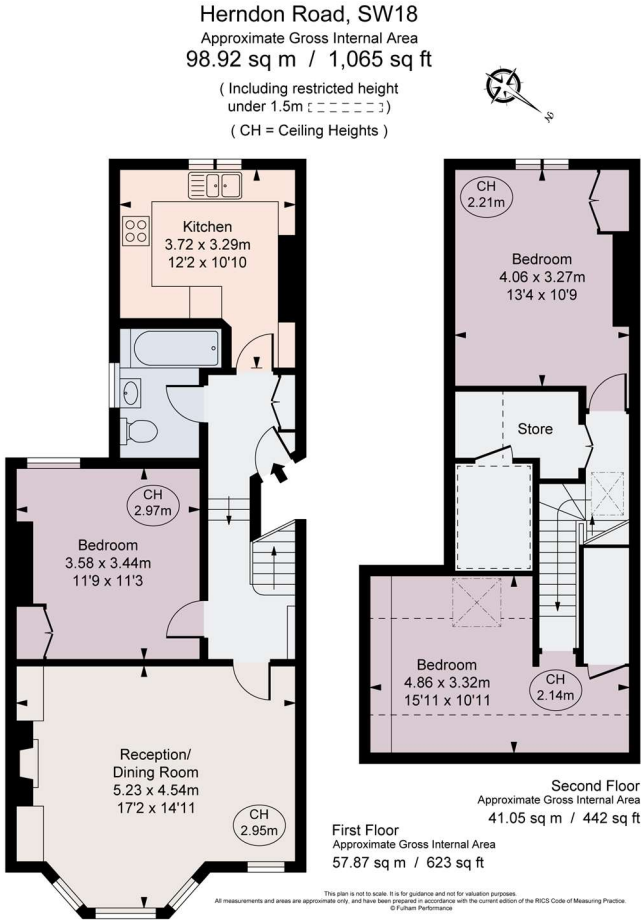




Herndon Road, London, SW18
Gross Internal Area 1065 sq ft, 98.9 m²

 savills | savills.co.uk

Sophie Barton
Wandsworth
+44 (0) 20 8877 1222
sophie.barton@savills.com



Important Notice Savills, its clients and any joint agents give notice that 1: They are not authorised to make or give any representations or warranties in relation to the property either here or elsewhere, either on their own behalf or on behalf of their client or otherwise. They assume no responsibility for any statement that may be made in these particulars. These particulars do not form part of any offer or contract and must not be relied upon as statements or representations of fact. 2: Any areas, measurements or distances are approximate. The text, photographs and plans are for guidance only and are not necessarily comprehensive. It should not be assumed that the property has all necessary planning, building regulation or other consents and Savills have not tested any services, equipment or facilities. Purchasers must satisfy themselves by inspection or otherwise. 20220614AHAL

