



A fantastic two bedroom garden flat

Magdalen Road, Wandsworth, London, SW18

Leasehold





Reception room • Open plan kitchen • Two double bedrooms • Bathroom • Cloakroom • Garden

Local Information

Magdalen Road runs off Trinity Road and close to the popular Magdalen Park Lawn Tennis Club. Transport connections from either Earlsfield and Wandsworth Common mainline stations provide easy transport links into central London. The green open spaces of Wandsworth Common are close by and there are many good schools in the area, including the popular Beatrix Potter. There are excellent shops, wine bars and restaurants on both the Bellevue and Northcote Roads with larger supermarkets at the Southside Centre in Wandsworth.

About this property

This is a wonderful two bedroom flat which is located on the corner of Ellerton Road and Magdalen Road. Upon entrance there is a spacious hallway from which all the rooms lead off. The open plan reception room and kitchen has a modern kitchen with wooden units and appliances fitted in. Bi-folding door lead out into the garden which has a grass lawn. There are two evenly sized double bedrooms and a family bathroom with an overhead shower and a separate cloakroom.

Please note the photos were taken over six months ago.

Tenure

Leasehold

Local Authority

London Borough of Wandsworth

Energy Performance

EPC Rating = C

Viewing

All viewings will be accompanied and are strictly by prior arrangement through Savills Wandsworth Office.

Telephone:

+44 (0) 20 8877 1222.

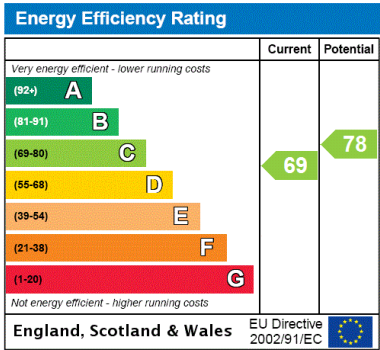
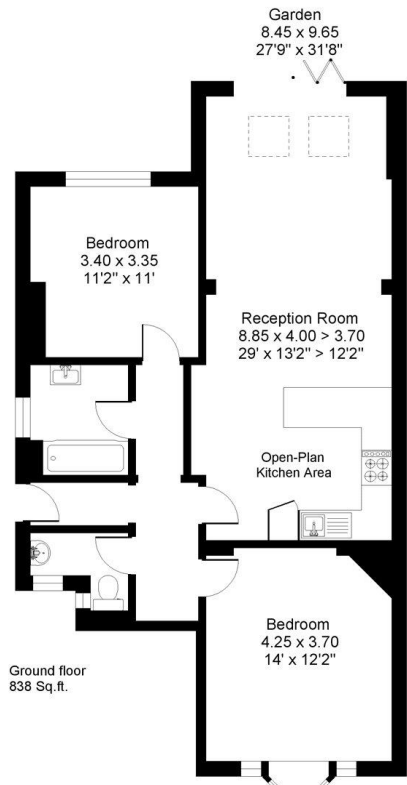


Magdalen Road, Wandsworth, London, SW18
Gross Internal Area 838 sq ft, 77.9 m²

Verity Wakley
Wandsworth
+44 (0) 20 8877 1222
verity.wakley@savills.com

 onTheMarket.com |  savills | savills.co.uk

Magdalen Road, SW18
Gross internal area (approx.):
77.9 sq.m. (838 sq.ft.)
For identification purposes only. Not to scale.
Floorplanners ©



Important Notice Savills, its clients and any joint agents give notice that 1: They are not authorised to make or give any representations or warranties in relation to the property either here or elsewhere, either on their own behalf or on behalf of their client or otherwise. They assume no responsibility for any statement that may be made in these particulars. These particulars do not form part of any offer or contract and must not be relied upon as statements or representations of fact. 2: Any areas, measurements or distances are approximate. The text, photographs and plans are for guidance only and are not necessarily comprehensive. It should not be assumed that the property has all necessary planning, building regulation or other consents and Savills have not tested any services, equipment or facilities. Purchasers must satisfy themselves by inspection or otherwise. 20200914TACB

