



A stunning semi-detached family house, over looking Wandsworth Common

Heathfield Gardens, Wandsworth, London, SW18

Freehold

savills



- Large open plan kitchen/dining room • Reception Room
- Media Room • Master Bedroom with an en suite bathroom
- Four Further Double Bedrooms all with en suite bathrooms
- Cloakroom • Eaves Storage on the second floor • Utility room
- Store room • South Facing Garden • Garden Studio/ Office to the rear of the garden

About this property

Situated in a unique setting on Wandsworth Common with open views across the Common from both the front and the rear of the house. This house sits on a quiet residential road, with easy parking for the residents and is an exceptional family home offering over 3900 sq ft of flexible living and entertaining space. Set back from the road, behind a beautifully landscaped garden this house has been completely rebuilt by the current owners to a high standard and has a fantastic feeling of light and space throughout. The house is ideal for both a young family or for a family with grown up children and it is coming to the open market for the first time since it was originally built.

The attractive hallway leads into the spacious and bright reception room, featuring large panelled sash windows and a pretty log fire. Double doors lead into the vast open plan kitchen/dining room, boasting copious amounts of natural light, due to the glass ceiling to the rear of the property and windows covering the entirety of the wall backing onto the garden. The custom built kitchen boasts fully integrated appliances, hand painted units, marble work surfaces and a large island.

French doors lead out on to the South facing walled garden with uninterrupted views over the Common. It has been cleverly landscaped with a large patio area leading onto the lawn with surrounding flower borders. The garden also features a studio, ideal as a home office. There is also side access into the garden, which is perfect for dogs and bicycles.

An illuminated staircase leads down to the lower ground floor where there is a substantial media / play room with ample amounts of built in storage. To the right of the staircase is a large double bedroom, featuring an integrated vanity, as well as sash windows and an en suite bathroom. There is also a Utility room, which follows through into a large storage room. The first floor features the charming principal Bedroom, featuring large sash windows, substantial amounts of storage space, a walk through shoe cupboard/dressing area, as well as a twin sink en suite bathroom. There is also an additional double bedroom with an en suite bathroom on the first floor. Completing the property is the second floor with a further two double bedrooms, both with en suite bathrooms.



Local Information

Heathfield Gardens is ideally located for the recreational facilities of Wandsworth Common together with the wonderful shops and restaurants around the Common on Bellevue Road and Northcote Road. The area is renowned for its choice of schools, both state and private. Transport is excellent with trains from Wandsworth Town and Clapham Junction mainline station, as well as a variety of bus routes close at hand.

Tenure

Freehold

Local Authority

Wandsworth

Energy Performance

EPC Rating = D

Viewing

All viewings will be accompanied and are strictly by prior arrangement through Savills Wandsworth Office.

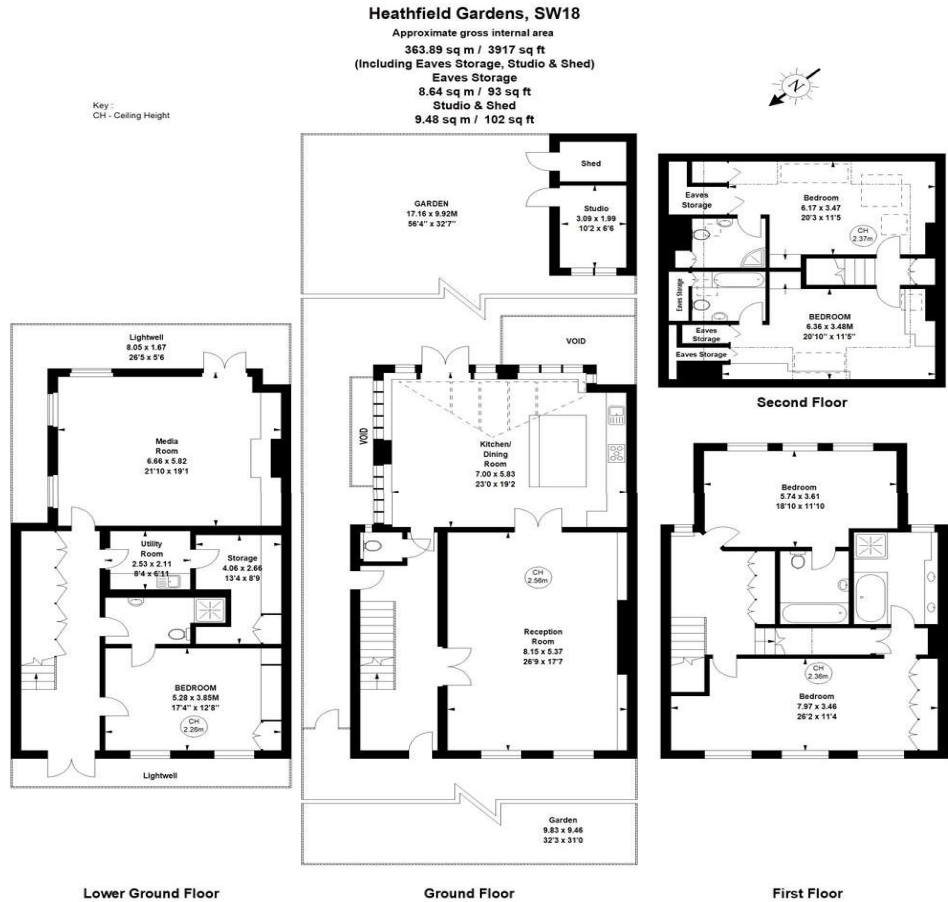
Telephone:

+44 (0) 20 8877 1222.

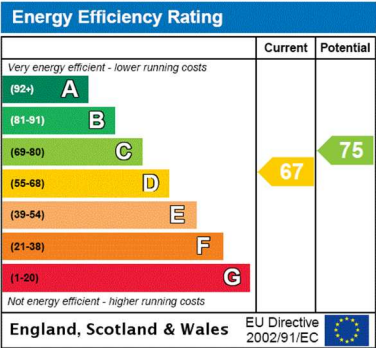




Heathfield Gardens, Wandsworth, London, SW18
Gross Internal Area 3917 sq ft, 363.9 m²



The floor plan is not to scale and measurements and areas shown are approximate and therefore should be used for illustrative purposes only. The plan has been prepared in accordance with the RICS code of Measuring Practice and whilst we have confidence in the information produced, it must not be relied on. If there is any aspect of particular importance, you should carry out or commission your own inspection of the property. Copyright of FeaturePRO.



Important Notice Savills, its clients and any joint agents give notice that 1: They are not authorised to make or give any representations or warranties in relation to the property either here or elsewhere, either on their own behalf or on behalf of their client or otherwise. They assume no responsibility for any statement that may be made in these particulars. These particulars do not form part of any offer or contract and must not be relied upon as statements or representations of fact. 2: Any areas, measurements or distances are approximate. The text, photographs and plans are for guidance only and are not necessarily comprehensive. It should not be assumed that the property has all necessary planning, building regulation or other consents and Savills have not tested any services, equipment or facilities. Purchasers must satisfy themselves by inspection or otherwise. 20210216TACB

