



A spacious modern semi-detached townhouse situated within a sought after and secure development

Wycombe Place, Wandsworth, London, SW18

£3,358.33 pcm plus fees apply, Unfurnished
Available from 28.08.2020



Four bedrooms • Reception room • Two bathrooms •
Private garden • End of Terrace

Local Information

Wycombe Place is situated in the heart of Wandsworth, 0.6 miles from the cinema, shops and restaurants at Southside Shopping Centre. Transport links include Wandsworth Town mainline station 0.8 miles away together with numerous bus services. The area is well known for its many schools, both private and state.

About this property

A spacious, modern four double bedroom townhouse situated within a gated development. The house comprises of a large eat in newly fitted kitchen and French doors leading out onto a private garden to the rear of the house.

The reception room and four double bedrooms are arranged over the two upper floors with two bathrooms and a further cloakroom on the ground floor. The house also benefits from secure off street parking.

Furnishing

Unfurnished

Local Authority

Wandsworth
Council Tax Band = G

Energy Performance

EPC Rating = C

Viewing

All viewings will be accompanied and are strictly by prior arrangement through Savills Wandsworth Lettings Office.

Telephone: +44 (0) 20 8877 4820.



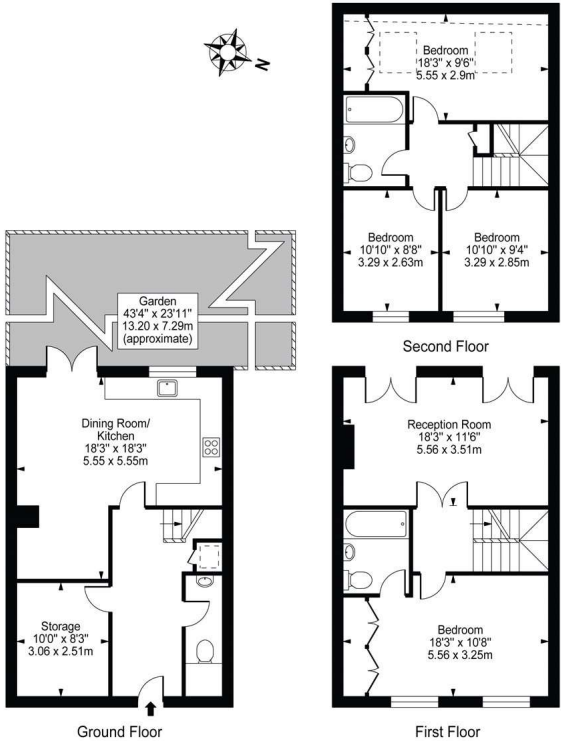


Wycombe Place, Wandsworth, London, SW18
Gross Internal Area 1537 sq ft, 142.8 m²

 onTheMarket.com |  savills | savills.co.uk

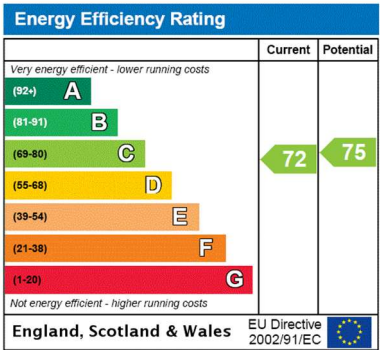
Eve Blackett
Wandsworth Lettings
+44 (0) 20 8877 4820
eblackett@savills.com

Wycombe Place
Approx. Gross Internal Area 1537 Sq Ft - 142.80 Sq M
(Including Restricted Height)



For Illustration Purposes Only - Not To Scale

This floor plan should be used as a general outline for guidance only and does not constitute in whole or in part an offer or contract.
Any intending purchaser or lessee should satisfy themselves by inspection, searches, enquiries and full survey as to the correctness of each statement.
Any areas, measurements or distances quoted are approximate and should not be used to value a property or be the basis of any sale or let.



Important notice Savills, their clients and any joint agents give notice that: 1. They are not authorised to make or give any representations or warranties in relation to the property either here or elsewhere, either on their own behalf or on behalf of their client or otherwise. They assume no responsibility for any statement that may be made in these particulars. These particulars do not form part of any offer or contract and must not be relied upon as statements or representations of fact. 2. Any areas, measurements or distances are approximate. The text, images and plans are for guidance only and are not necessarily comprehensive. It should not be assumed that the property has all necessary planning, building regulation or other consents and Savills have not tested any services, equipment or facilities. Prospective tenants must satisfy themselves by inspection or otherwise. Please note that the local area may be affected by aircraft noise, you should make your own enquiries regarding any noise within the area before you make any offer.

*There are different rules and fees for different tenancy types. For details of our fees and charges please go to Savills.co.uk/tenant-fees. For more detailed information read our applicant guide at savills.co.uk/applicant-guide.
Hard copy available on request. . 20200714KTMS

