



Beautiful one bedroom apartment with a balcony & roof terrace

Fairfield Road, London, E3

£1,600 pcm plus fees apply, Furnished
Available from 07.06.2022

savills

- High Spec Finish
- Balcony
- Communal Roof Terrace
- Close to Olympic Park
- Good Transport Links

Local Information

Minton Court is ideally located on Fairfield Road, providing easy access to Bow Road and Bow Church allowing for a quick commute to Canary Wharf and the City.

About this property

Accommodation comprises of a spacious living room with open plan kitchen, a large bedroom, bathroom and a balcony. Finished to very high specification, with fully integrated kitchen. Further benefits of the development include secure bicycle storage and a roof terrace with stunning views across London.

Furnishing

Furnished

Local Authority

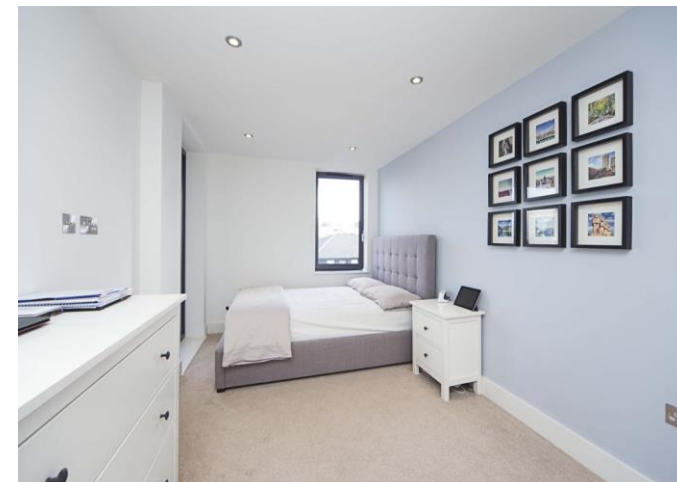
London Borough of Tower Hamlets
Council Tax Band = C

Energy Performance

EPC Rating = B

Viewing

All viewings will be accompanied and are strictly by prior arrangement through Savills Victoria Park Lettings Office.
Telephone: +44 (0) 20 3222 5555.





Fairfield Road, London, E3
 Gross Internal Area 524 sq ft, 48.7 m²



savills.co.uk

Nikita Davis
 Victoria Park Lettings
 +44 (0) 20 3222 5555
 nikita.davis@savills.com

Minton Court

Approximate Gross Internal Area
 48.7 sq m / 524 sq ft

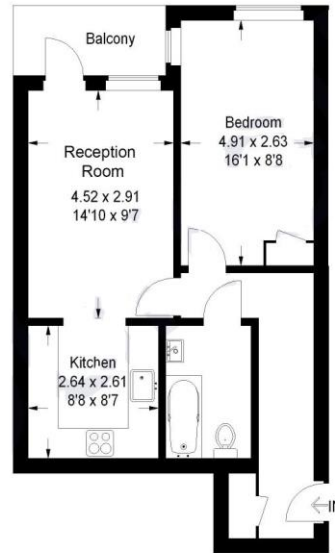


Illustration for identification purposes only, measurements are approximate, not to scale.
 FloorplansUsketch.com © 2014 (ID129561)

Energy Efficiency Rating		Current	Potential
Very energy efficient - lower running costs			
(92-)	A		
(81-91)	B	83	83
(69-80)	C		
(55-68)	D		
(39-54)	E		
(21-38)	F		
(1-20)	G		
Not energy efficient - higher running costs			
England, Scotland & Wales		EU Directive 2002/91/EC	

Important notice Savills, their clients and any joint agents give notice that: 1. They are not authorised to make or give any representations or warranties in relation to the property either here or elsewhere, either on their own behalf or on behalf of their client or otherwise. They assume no responsibility for any statement that may be made in these particulars. These particulars do not form part of any offer or contract and must not be relied upon as statements or representations of fact. 2. Any areas, measurements or distances are approximate. The text, images and plans are for guidance only and are not necessarily comprehensive. It should not be assumed that the property has all necessary planning, building regulation or other consents and Savills have not tested any services, equipment or facilities. Prospective tenants must satisfy themselves by inspection or otherwise. Please note that the local area may be affected by aircraft noise, you should make your own enquiries regarding any noise within the area before you make any offer.

*There are different rules and fees for different tenancy types. For details of our fees and charges please go to Savills.co.uk/tenant-fees. For more detailed information read our applicant guide at savills.co.uk/applicant-guide.
 Hard copy available on request. . 20220330KAW

