



Delightful one bedroom Victorian flat, situated in the centre of Victoria Park Village

Victoria Park Road, London, E9

£300 pw (£1,300 pcm) plus fees apply, Unfurnished
Available from 10.03.2021



- Sash Windows
- High Ceilings
- Village Location
- Close To Victoria Park
- Excellent Transport Links

Local Information

The property is moments from Victoria Park and all local trendy bars, restaurants, boutiques, bistro pubs and cafes. Transport links in to Canary Wharf, Bethnal Green, Highbury & Islington and Liverpool Street.

About this property

Located only moments away from the popular bars and restaurants of Lauriston Road and the open spaces of Victoria Park, is this bright one bedroom apartment. The property offers one good size bedroom with a separate bathroom and an open plan lounge and kitchen.

Furnishing

Unfurnished

Local Authority

London Borough of Hackney
Council Tax Band = C

Energy Performance

EPC Rating = D

Viewing

All viewings will be accompanied and are strictly by prior arrangement through Savills Victoria Park Lettings Office. Telephone: +44 (0) 20 3222 5555.



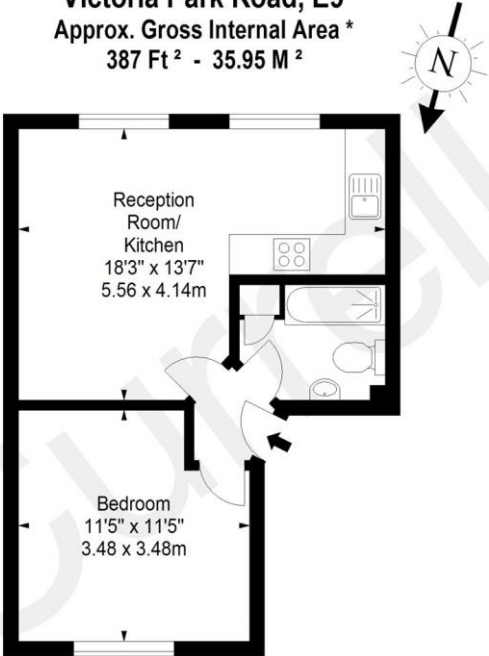


Victoria Park Road, London, E9
Gross Internal Area 387 sq ft, 36 m²

 OnTheMarket.com |  savills | savills.co.uk

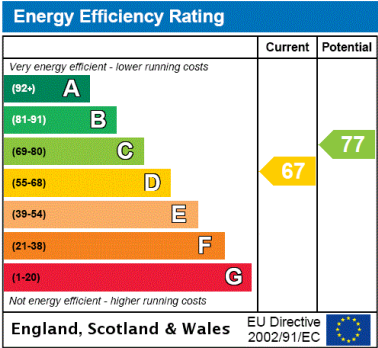
Jasmine Lawrence
Victoria Park Lettings
+44 (0) 20 3222 5555
jasmine.lawrence@savills.com

Victoria Park Road, E9
Approx. Gross Internal Area *
387 Ft² - 35.95 M²



First Floor

Every attempt has been made to ensure the accuracy of this floor plan however, measurements are approximate and for illustration purposes only. Measured in accordance with the RICS code of measuring practice. Not to scale
© Inside Photography Ltd.
Tel 07850 620 122 , 0207 263 2188
www.ipinteriors.co.uk



Important notice Savills, their clients and any joint agents give notice that: 1. They are not authorised to make or give any representations or warranties in relation to the property either here or elsewhere, either on their own behalf or on behalf of their client or otherwise. They assume no responsibility for any statement that may be made in these particulars. These particulars do not form part of any offer or contract and must not be relied upon as statements or representations of fact. 2. Any areas, measurements or distances are approximate. The text, images and plans are for guidance only and are not necessarily comprehensive. It should not be assumed that the property has all necessary planning, building regulation or other consents and Savills have not tested any services, equipment or facilities. Prospective tenants must satisfy themselves by inspection or otherwise. Please note that the local area may be affected by aircraft noise, you should make your own enquiries regarding any noise within the area before you make any offer.

*There are different rules and fees for different tenancy types. For details of our fees and charges please go to Savills.co.uk/tenant-fees. For more detailed information read our applicant guide at savills.co.uk/applicant-guide.
Hard copy available on request. . 20210303JSLW

