



Stunning gated mews house.

Brickfield Close, Brenthouse Road, London, E9

£750,000 Freehold



Gated mews • Two bedrooms • Two bathrooms • Enclosed terrace • Excellent condition

Local Information

Brickfield Close is located on Brenthouse Road with Mare Street on your doorstep and Well Street 0.3 miles away with its array of shops, cafes and restaurants.

The green open spaces of London Fields is 0.4 miles away, along with London Fields Overground station. There are many bus links nearby which provide easy access down into the City.

About this property

Savills are delighted to offer on to the market this stunning modern house set within an impressive gated mews. The house has been refurbished to a high standard by the current owners and is arranged over three floors.

Accommodation comprises: entrance hallway with access into the second bedroom with built-in wardrobes, en-suite and double doors onto the front communal area. This room is currently being used as an additional reception area and can be adapted to suit the owner's requirements.

On the first floor, there is a beautiful reception/kitchen with all modern appliances and floor to ceiling feature window which pours the room with natural light. On the top floor are the principal bedroom, family bathroom and enclosed terrace.

Tenure

Freehold

Local Authority

Hackney Council

Energy Performance

EPC Rating = To be confirmed

Viewing

All viewings will be accompanied and are strictly by prior arrangement through Savills Victoria Park Office.

Telephone: +44 (0) 20 3222 5555.





Brickfield Close, Brenthouse Road, London, E9
Gross Internal Area 989 sq ft, 91.9 m²



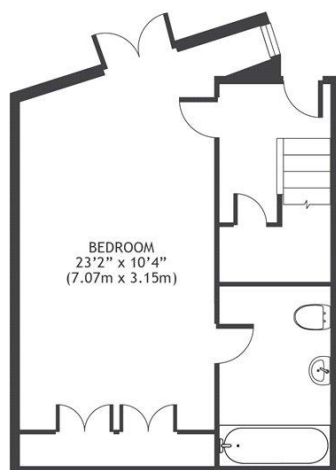
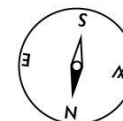
savills

savills.co.uk

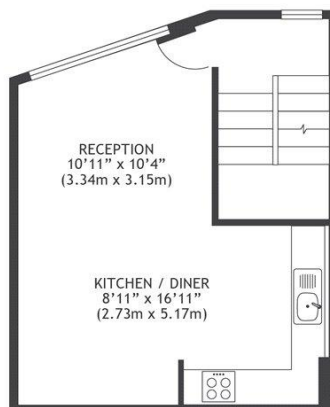
James Marshall
Victoria Park
+44 (0) 20 3222 5555
james.marshall@savills.com

BRICKFIELD CLOSE E9

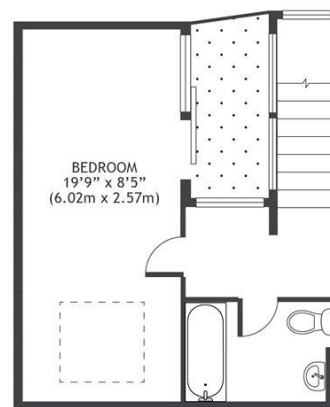
Approximate Gross Internal Area
91.9 m² / 989.20 sq^{ft}



GROUND FLOOR



FIRST FLOOR



SECOND FLOOR

Important Notice Savills, its clients and any joint agents give notice that 1: They are not authorised to make or give any representations or warranties in relation to the property either here or elsewhere, either on their own behalf or on behalf of their client or otherwise. They assume no responsibility for any statement that may be made in these particulars. These particulars do not form part of any offer or contract and must not be relied upon as statements or representations of fact. 2: Any areas, measurements or distances are approximate. The text, photographs and plans are for guidance only and are not necessarily comprehensive. It should not be assumed that the property has all necessary planning, building regulation or other consents and Savills have not tested any services, equipment or facilities. Purchasers must satisfy themselves by inspection or otherwise. 20220114MEHT

