



## Stylish cottage close to the town's amenities

**Little Acorn, 12 Park Street, Sheep Street, Stow-on-the-Wold, Gloucestershire**

Freehold with vacant possession upon completion



Sitting/dining room • Kitchen • Two double bedrooms  
• Bathroom • Roof terrace

### Situation and Communications

Situated in a charming market town which enjoys an elevated situation.

Within the Cotswold Area of Outstanding Natural Beauty.

Just 5 miles from Daylesford Organic Farm Shop and 18 miles from Soho Farmhouse founded as a home from home for people working in the creative industries.

Strategically located just off the north/south Fosse Way and near to the A40/M40 to London and the A44 Oxford to Worcester east/west trunk road.

The area is well served by excellent hotels and restaurants.

Oxford and Cheltenham are very accessible and provide more extensive leisure and shopping amenities.

Mainline railway stations at Moreton-in-Marsh and Kingham which service London Paddington, Oxford, Worcester and Hereford.

### Little Acorn

Little Acorn is a charming town cottage situated within easy access of the Market Square. Constructed of Cotswold stone, the property has recently been refurbished. The beautifully presented and very stylish accommodation is laid out over three floors and comprises:

Open to dining area with oak floorboards and handsome stone fireplace.

Fitted kitchen with a range of appliances and Belfast sink

Principal bedroom with ample fitted wardrobes and two charming window seats

Further double bedroom with beams.

Good sized and well appointed bathroom.

Roof terrace with views over the surrounding rooftops.

The property will appeal to a broad audience of buyers including owner-occupiers but particularly investors and those looking for a second home.

### Local Authority

Cotswold District Council.  
Telephone 01285 623000.  
Council tax band D.

### Services

Mains electricity, gas, water and drainage are connected. Gas central heating. Telephone line subject to BT transfer regulations.

### Directions GL54 1AQ

From Burford/Cirencester (A424/A429), proceed up South Hill until reaching the traffic lights. Turn right into Sheep Street (A436). Proceed down the hill for about 300m where the property will be found on the left hand side.

### Date of Information

Particulars prepared: June 2019. Photographs taken: June 2019.

### Viewing

Strictly by appointment with Savills.





**Little Acorn, 12 Park Street, Stow-on-the-Wold, Cheltenham, GL54 1AQ**

**Approximate Area** 84.8 sq m / 913 sq ft

**Including Limited Use Area** (9.6 sq m / 103 sq ft)



savills

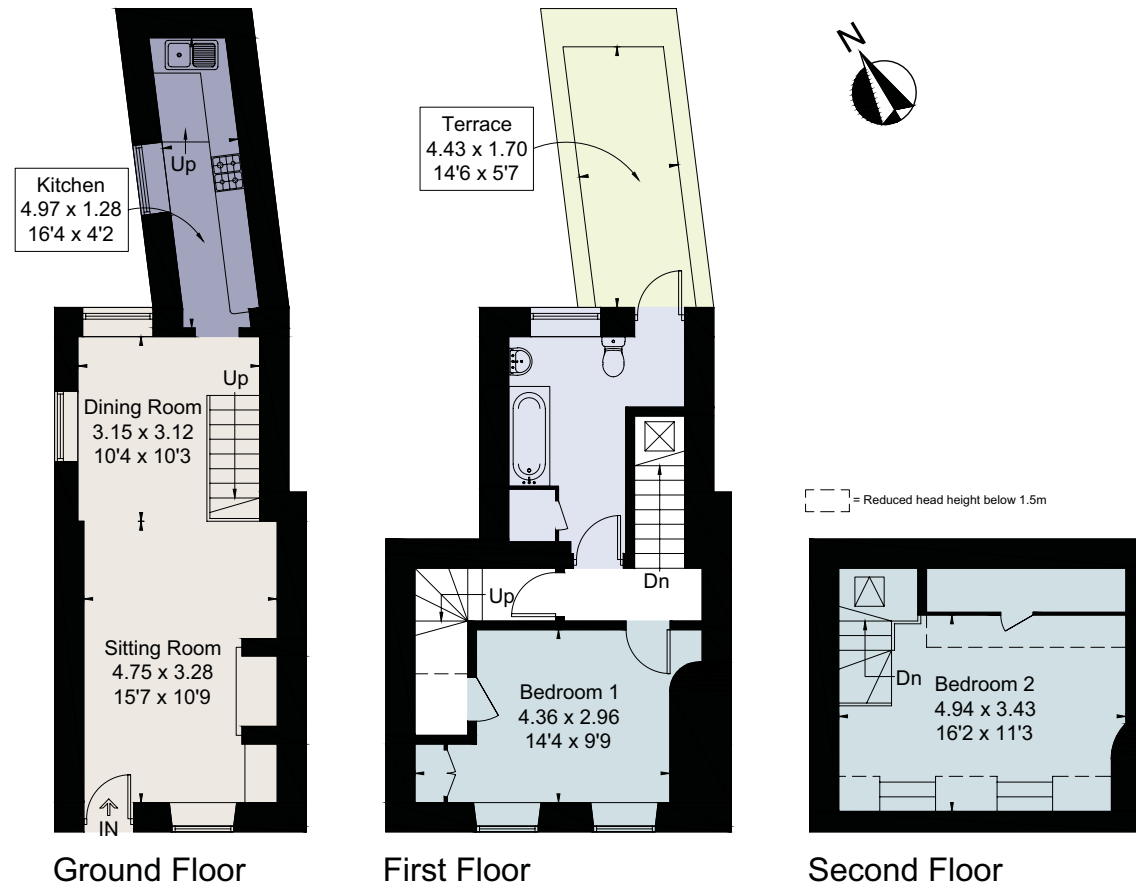
savills.co.uk

**Clemmy Jones**

Savills Stow-on-the-Wold

**01451 832 836**

stow@savills.com



For identification only. Not to scale. © 190701CJ

**Important notice** Savills, its clients and any joint agents give notice that 1: They are not authorised to make or give any representations or warranties in relation to the property either here or elsewhere, either on their own behalf or on behalf of their client or otherwise. They assume no responsibility for any statement that may be made in these particulars. These particulars do not form part of any offer or contract and must not be relied upon as statements or representations of fact. 2: Any areas, measurements or distances are approximate. The text, photographs and plans are for guidance only and are not necessarily comprehensive. It should not be assumed that the property has all necessary planning, building regulation or other consents and Savills have not tested any services, equipment or facilities. Purchasers must satisfy themselves by inspection or otherwise. Brochure by fourwalls-group.com

