



## **A GRADE II LISTED APARTMENT WITH SPACIOUS ACCOMMODATION.**

**GISLEBERTUS HOUSE, HUNTINGTON COURTYARD, SHEEP STREET, STOW-ON-THE-WOLD,  
GLOUCESTERSHIRE GL54 1AA**

**Guide Price £565,000, Leasehold**



## A RECENTLY CONVERTED GRADE II LISTED APARTMENT WITH SPACIOUS ACCOMMODATION.

GISLEBERTUS HOUSE, HUNTINGTON COURTYARD,  
SHEEP STREET, STOW-ON-THE-WOLD,  
GLOUCESTERSHIRE GL54 1AA

**Guide Price £575,000, Leasehold**

Superbly renovated apartment • Period features •  
Modern fixtures & fittings • Courtyard setting •  
Designated parking

Kitchen/dining room, sitting room, cloakroom,  
two en suite bedrooms.

- EPC Rating = Exempt
- Council Tax = D

### Situation

The town of Stow-on-the-Wold is well served with a wide variety of restaurants and shops as well as bars and of course antique shops. Cheltenham and Oxford provide more extensive shopping, leisure and educational facilities. There is a regular train service from Kingham Station to Oxford and London.

### Description

Approached via a flight of stairs, this first floor two bedroom apartment has a wealth of period features and has been renovated to the highest standard. The exposed stonework and historical wood panelling complements the modern fixtures and fittings and the kitchen to create a modern masterpiece. This unique apartment has high vaulted ceilings and many period touches throughout.

### Tenure

Leasehold.

### Services

Mains water, electricity, gas and drainage.

### Local Authority

Cotswold District Council, t: 01285 623000. Band D.



### Directions

From the Fosse Way (A429) turn west into Sheep Street. Huntington Courtyard will be found on the left hand side identified by the agents' sale boards. Drive into the courtyard where there is ample parking.

### Viewing

Strictly by appointment with Savills.

### Wayleaves, Easements and Rights of Way

The property is sold subject to the benefit of all rights including rights of way, whether public or private, light, support, drainage, water and electricity supplies and any other rights and obligations, easements and proposed wayleaves for masts, pylons, stays, cables, drains and water, gas and other pipes, whether referred to in the Conditions of Sale, or not.

Details prepared: April 2022

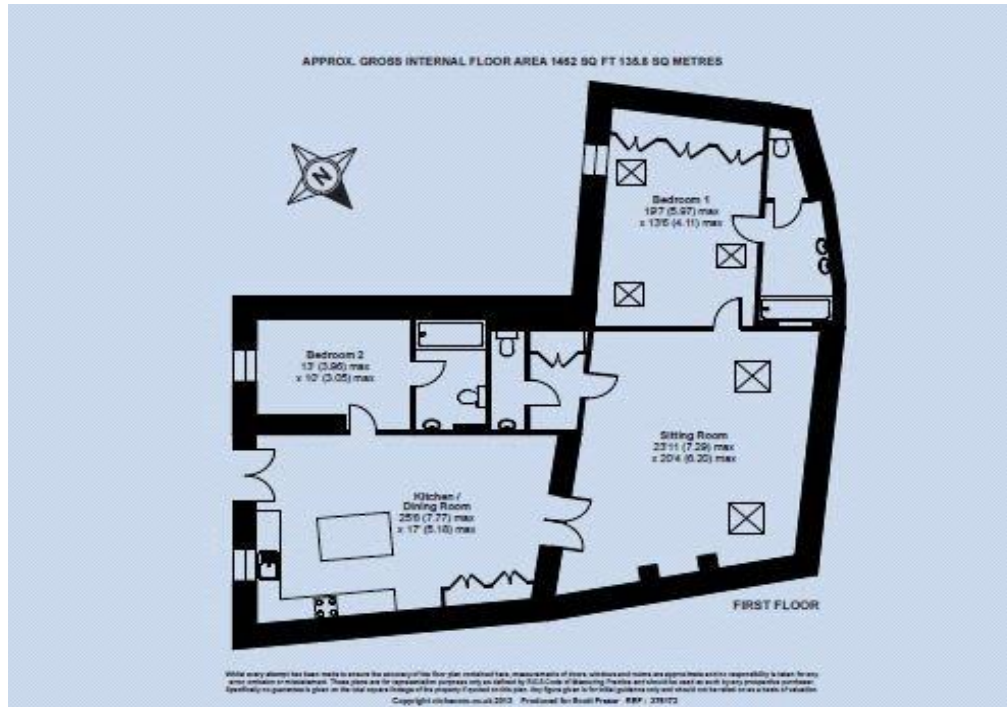
Photographs taken: April 2022

DBH19042022



## FLOORPLANS

Gross internal area: 1462 sq ft, 135.8 m<sup>2</sup>



### Stow-on-the-Wold

David Henderson

david.henderson@savills.com

+44 (0) 1451 832 832

[savills.co.uk](http://savills.co.uk)

Savills, their clients and any joint agents give notice that: 1. They are not authorised to make or give any representations or warranties in relation to the property either here or elsewhere, either on their own behalf or on behalf of their client or otherwise. They assume no responsibility for any statement that may be made in these particulars. These particulars do not form part of any offer or contract and must not be relied upon as statements or representations of fact. 2. Any areas, measurements or distances are approximate. The text, images and plans are for guidance only and are not necessarily comprehensive. It should not be assumed that the property has all necessary planning, building regulation or other consents and Savills have not tested any services, equipment or facilities. Purchasers must satisfy themselves by inspection or otherwise. 19042022DBH