



Impressive Victorian 3 bedroom luxury apartment

Calverley Mansions, 16 Calverley Park Gardens, Tunbridge Wells, Kent, TN1

£2,750 pcm plus fees apply, Unfurnished
Available from 22.11.2019



Period apartment • 3 bedrooms • Kitchen/breakfast room • 2 bathrooms • Allocated parking space • Convenient for the town centre

Local Information

Calverley Mansions is located within around half a mile of Tunbridge Wells town centre and close to the mainline station.

About this property

This beautifully presented 3 bedroom apartment offers flexible accommodation and benefits from many original features throughout.

INTERNALLY

The entrance hall leads to the family bathroom with a large stained glass window and walnut flooring. Bedroom 1 is a double room which is neutrally decorated and has a window to the front of the property. The bespoke kitchen/breakfast room is large enough to fit a generous table & chairs. The kitchen is fitted with a range of base and wall mounted units, granite work surfaces, walnut flooring and integrated appliances.

The spacious sitting room has neutral carpets, high ceilings and a period fireplace with cast iron grate. The sash windows are fitted with wooden shutters. Bedroom 2 is a double room with a period feature fireplace and window to the rear.

The master bedroom has a large sash window to the front and 2 built in cupboards. The well appointed en suite shower room

has walnut flooring, double basins, a walk in power shower with multi jets and double heated towel rail.

There are 2 allocated parking spaces.

Furnishing

Unfurnished

Local Authority

Tunbridge Wells Borough Council

Energy Performance

EPC Rating = C

Viewing

All viewings will be accompanied and are strictly by prior arrangement through Savills Tunbridge Wells Lettings Office. Telephone: +44 (0) 1892 507 050.





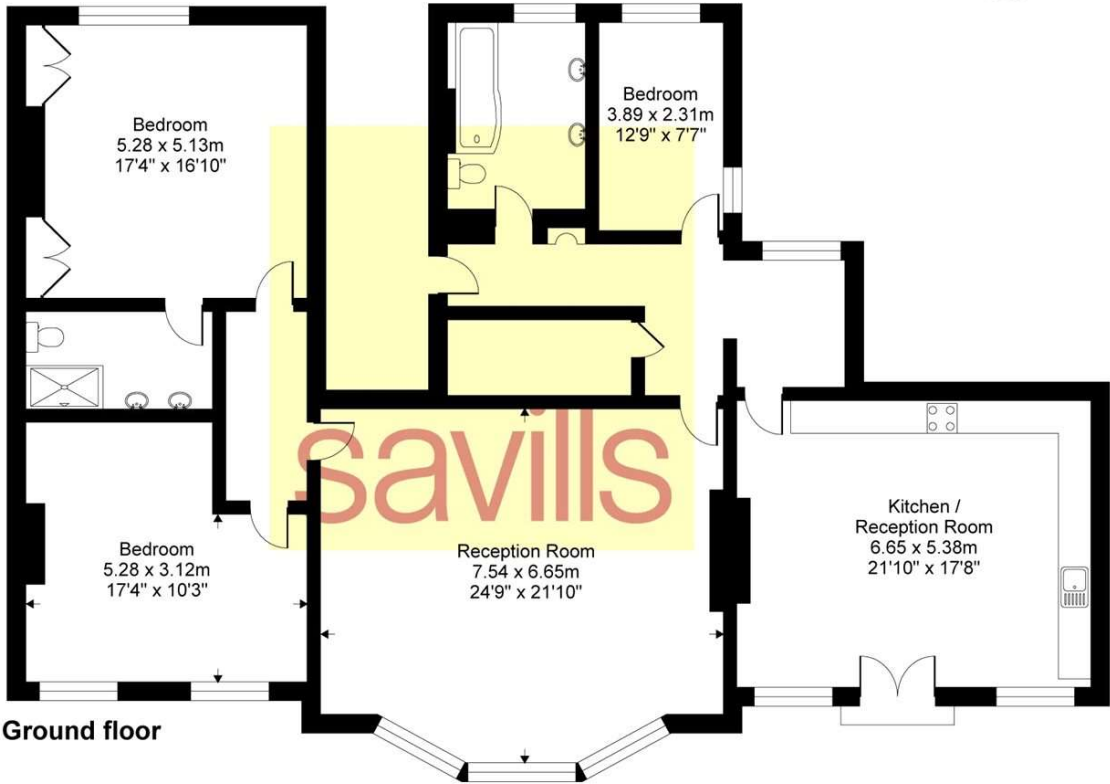
Calverley Mansions, 16 Calverley Park Gardens, Tunbridge Wells, Kent, TN1
Gross Internal Area 2091 sq ft, 194.3 m²


Michael Churchill
Tunbridge Wells Lettings
+44 (0) 1892 507 050
michael.churchill@savills.com

 |  savills | savills.co.uk

Calverley Park Gardens, TN1

Gross internal floor area (approx):
194.2 sq m / 2091 sq ft
For Identification only - Not to scale
Niche Communications



Energy Efficiency Rating		
	Current	Potential
Very energy efficient - lower running costs		
(92+) A		
(81-91) B		
(69-80) C		
(55-68) D		
(39-54) E		
(21-38) F		
(1-20) G		
Not energy efficient - higher running costs		
England, Scotland & Wales	EU Directive 2002/91/EC	

Important notice Savills, their clients and any joint agents give notice that: 1. They are not authorised to make or give any representations or warranties in relation to the property either here or elsewhere, either on their own behalf or on behalf of their client or otherwise. They assume no responsibility for any statement that may be made in these particulars. These particulars do not form part of any offer or contract and must not be relied upon as statements or representations of fact. 2. Any areas, measurements or distances are approximate. The text, images and plans are for guidance only and are not necessarily comprehensive. It should not be assumed that the property has all necessary planning, building regulation or other consents and Savills have not tested any services, equipment or facilities. Prospective tenants must satisfy themselves by inspection or otherwise. Please note that the local area may be affected by aircraft noise, you should make your own enquiries regarding any noise within the area before you make any offer.

*There are different rules and fees for different tenancy types. For details of our fees and charges to go to Savills.co.uk/tenant-fees. For more detailed information read our applicant guide at savills.co.uk/applicant-guide. Hard copy available on request. . 20191017JDCA

