



A bright one bedroom apartment set in a popular

St. Johns House, 50 Vine Street, London, EC3N

£2,000 pcm plus fees apply, Part Furnished

Available from 15.07.2022 6 months minimum tenancy



- One bedroom
- Open plan layout
- Recently refurbished
- Popular development
- Great location

Local Information

On the edge of the square mile, St. Johns House is located on Vine Street in Tower Hill only a 4 minutes walk from Tower Hill Station with connections into the City, West End and Canary Wharf and a 4 minute walk to Fenchurch Street station with it's various overland services. The property is located an 8 minute walk from the Thames footpath, Tower Bridge and Tower Hill Millennium Pier and 8 minutes from St Katharine Docks with it's numerous waterfront bars, restaurants and shops.

About this property

A well proportioned one bedroom apartment set in a popular development in a convenient location. This bright apartment benefits from an open plan kitchen reception room, large windows, built in storage and it's been newly refurbished and furnished to a good standard.

Minimum tenancy term is 6 months.

Furnishing

Part Furnished

Additional Fees

Deposit: £2307.69

Holding Deposit: £461.53

Local Authority

City Of London

Council Tax

Band = E

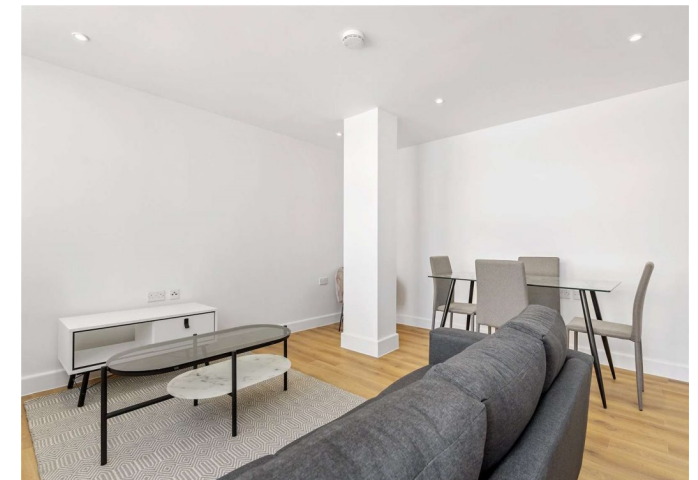
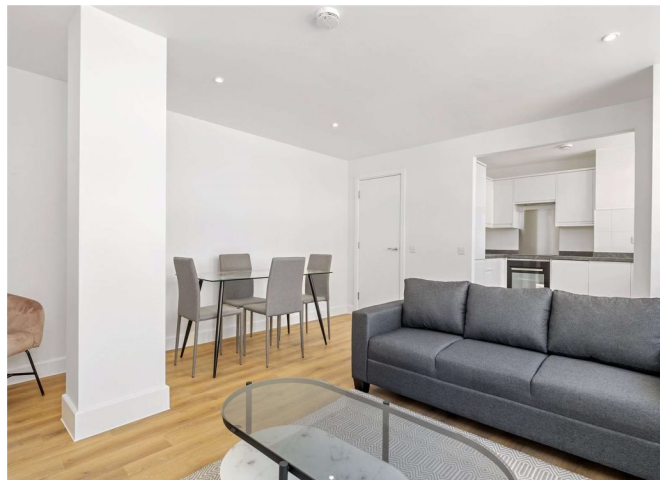
Energy Performance

EPC Rating = D

Viewing

All viewings will be accompanied and are strictly by prior arrangement through Savills Shoreditch Lettings Office.

Telephone: +44 (0) 207 578 6222.





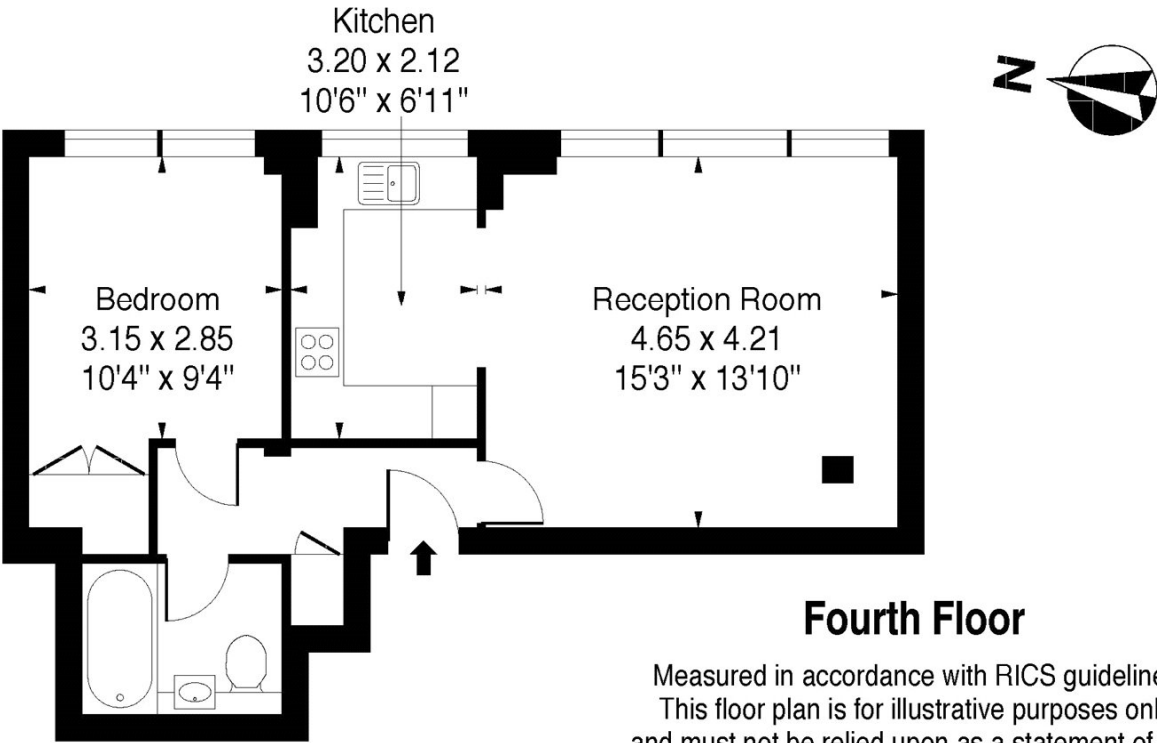
St. Johns House, 50 Vine Street, London, EC3N
Gross Internal Area 502 sq ft, 46.6 m²



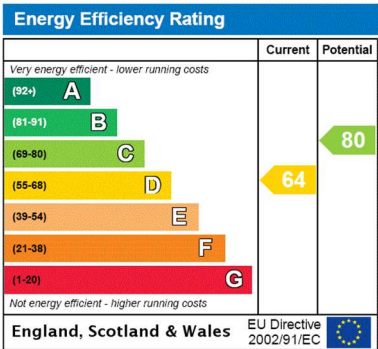
Leon Murray
Shoreditch Lettings
+44 (0) 207 578 6222
leon.murray@savills.com

St Johns House,
Vine Street EC3N

Approximate Gross Internal Area = 502 sq ft / 46.64 sqm



Measured in accordance with RICS guidelines.
This floor plan is for illustrative purposes only
and must not be relied upon as a statement of fact.
© ollyhewitt.co.uk



Important notice Savills, their clients and any joint agents give notice that: 1. They are not authorised to make or give any representations or warranties in relation to the property either here or elsewhere, either on their own behalf or on behalf of their client or otherwise. They assume no responsibility for any statement that may be made in these particulars. These particulars do not form part of any offer or contract and must not be relied upon as statements or representations of fact. 2. Any areas, measurements or distances are approximate. The text, images and plans are for guidance only and are not necessarily comprehensive. It should not be assumed that the property has all necessary planning, building regulation or other consents and Savills have not tested any services, equipment or facilities. Prospective tenants must satisfy themselves by inspection or otherwise. Please note that the local area may be affected by aircraft noise, you should make your own enquiries regarding any noise within the area before you make any offer.

*There are different rules and fees for different tenancy types. For details of our fees and charges please go to Savills.co.uk/tenant-fees. For more detailed information read our applicant guide at savills.co.uk/applicant-guide.
Hard copy available on request. . 20220525CLO

