



A striking detached home with south facing garden

2 Harefields, Oxford OX2 8NS

Freehold

savills

2 reception room • study • kitchen & breakfast room
• utility & cloakroom • 5 bedrooms • bathroom & shower
room • parking • gardens

Local information

The property lies on a corner position in a side road in this popular North Oxford suburb. It is within a two mile radius of the city centre and, just to the north, is Oxford Parkway, with a regular service to London Marylebone. It is well placed for the popular Oxford schools, and nearby Summertown has an enticing array of shops and restaurants, including a bakery, cafes and a speciality bookshop.

Directions

From Savills Summertown office, proceed north on Banbury Road. Continue straight over the roundabout and turn right into Harefields. The property will be found on the right hand side.

About this property

This is a striking 1920s detached house built by Hinkins and Frewin with an internal floor area of around 2303 sq ft.

The well proportioned, flexible accommodation is arranged over two floors, with a wealth of period features including fireplaces, cornicing, bay windows and panelled internal doors. There are three separate reception rooms on the ground floor which, together with the kitchen and breakfast room, provide great family, living and entertaining space, and there is also a useful utility room and cloakroom.

On the first floor are five bedrooms, together with a bathroom and shower room. The neatly tended gardens which surround the property are an attractive feature. The well stocked rear garden is south facing and laid to lawn and interspersed with trees, flowers and shrubs. A useful driveway provides parking for two cars.

Services

Mains services connected.
Gas heating.

Photographs taken 2015
brochure prepared September
2020.

Tenure

Freehold

Energy Performance

A copy of the full Energy
Performance Certificate is
available upon request.

Viewing

Strictly by appointment with
Savills.





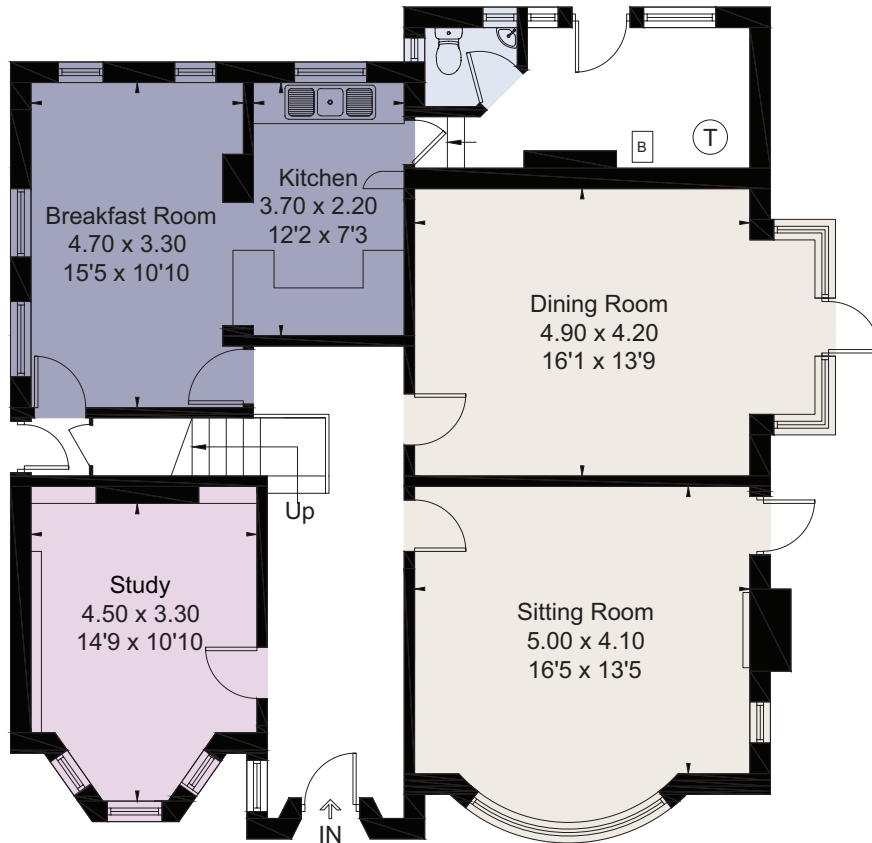
2 Harefields, Oxford OX2 8NS
Approximate Area 214.0 sq m / 2303 sq ft



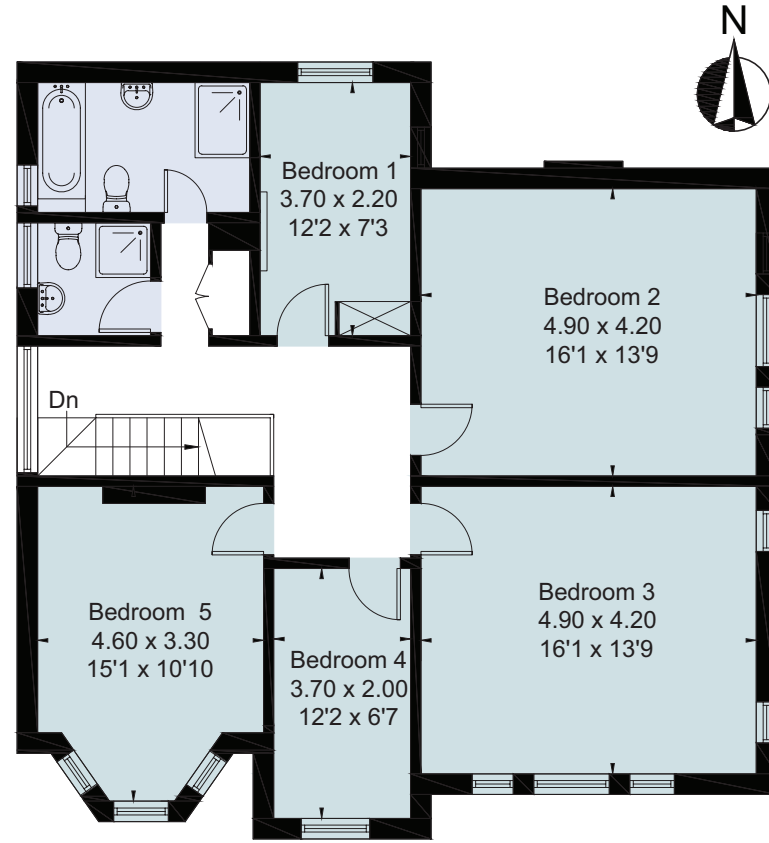
savills

savills.co.uk

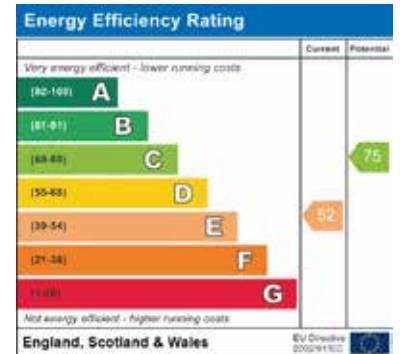
Ronnie van der Ploeg
 Savills Summertown, Oxford
01865 339 705
 summertown@savills.com



Ground Floor



First Floor



For identification only. Not to scale. © 200928RVDP

Important notice Savills, its clients and any joint agents give notice that 1: They are not authorised to make or give any representations or warranties in relation to the property either here or elsewhere, either on their own behalf or on behalf of their client or otherwise. They assume no responsibility for any statement that may be made in these particulars. These particulars do not form part of any offer or contract and must not be relied upon as statements or representations of fact. 2: Any areas, measurements or distances are approximate. The text, photographs and plans are for guidance only and are not necessarily comprehensive. It should not be assumed that the property has all necessary planning, building regulation or other consents and Savills have not tested any services, equipment or facilities. Purchasers must satisfy themselves by inspection or otherwise. Brochure by fourwalls-group.com

