



# On the doorstep of St Clements

13 Jeune Street, Oxford, OX4 1BG

Freehold



Hall • double reception room • kitchen • cloakroom  
• 4 bedrooms • two bathrooms • courtyard garden

#### **Situation**

Jeune Street is a one-way side road linking Cowley Road to St Clements. Lying in this popular location, with good access to the Oxford colleges, Brookes University, schools and hospitals, From the top of nearby South Park, there are glorious views over Oxford 'dreaming spires'. Good access to coaches to London and the airports, together with the local shops, bars and cafés in St. Clements and Cowley Road.

#### **Directions**

At The Plain roundabout at the foot of the high street, take the second exit onto Cowley Road. Turn left after a distance into Jeune Street.

#### **About this Property**

This is a bay fronted mid terraced property, refurbished in recent years, yet retaining its original character and period features, with nicely proportioned accommodation arranged over three floors. On the ground floor, the sitting room overlooks the front, has a fireplace, and opens into the dining area, also with a fire place. The well fitted kitchen has a breakfast bar, window to the side and French doors opening to the garden. There is also a cloakroom. On the first floor are three bedrooms, two of which have built in wardrobes, and the family bathroom. On the second floor is the principal bedroom with an en suite shower room. There is a paved courtyard garden to the rear.

#### **Services**

Mains services connected.  
Gas heating

#### **Local Authority**

Oxford City Council

#### **Tenure**

Freehold

#### **Energy Performance**

A copy of the full Energy Performance Certificate is available upon request.

#### **Viewing**

Strictly by appointment with Savills.





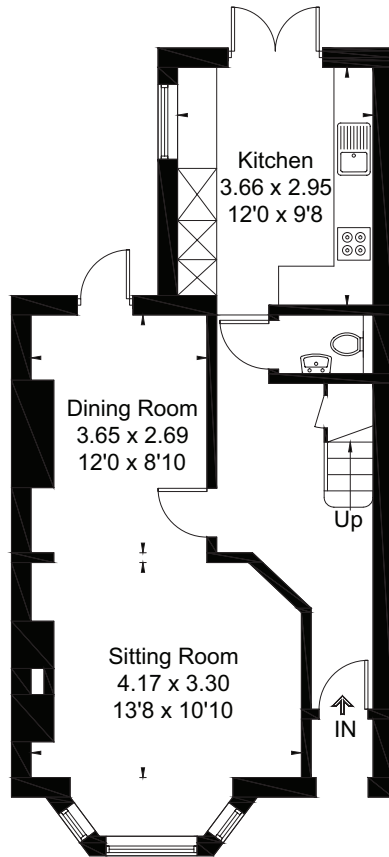
**13 Jeune Street, Oxford, OX4 1BG**  
**Gross Internal Area (approx)** 117 sq m / 1259 sq ft (Excluding Void)



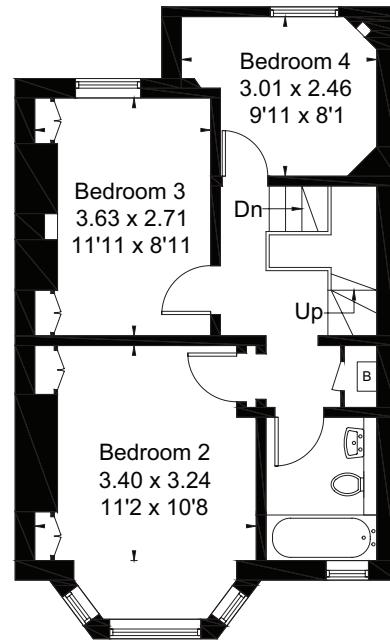
savills

savills.co.uk

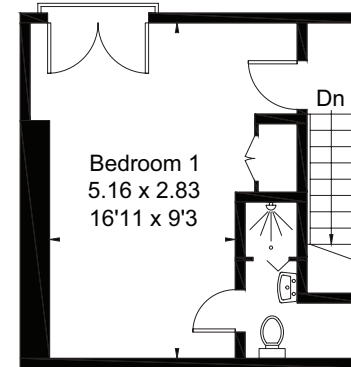
**Ronnie van der Ploeg**  
 Savills Summertown, Oxford  
**01865 339 705**  
 summertown@savills.com



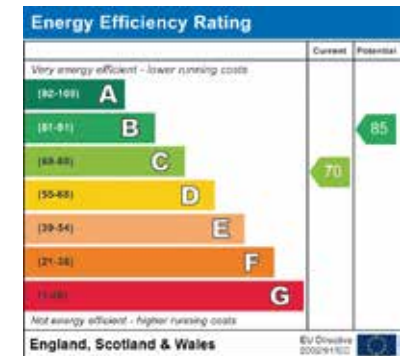
Ground Floor



First Floor



Second Floor



For identification only. Not to scale. © 200915RVDP

**Important notice** Savills, its clients and any joint agents give notice that 1: They are not authorised to make or give any representations or warranties in relation to the property either here or elsewhere, either on their own behalf or on behalf of their client or otherwise. They assume no responsibility for any statement that may be made in these particulars. These particulars do not form part of any offer or contract and must not be relied upon as statements or representations of fact. 2: Any areas, measurements or distances are approximate. The text, photographs and plans are for guidance only and are not necessarily comprehensive. It should not be assumed that the property has all necessary planning, building regulation or other consents and Savills have not tested any services, equipment or facilities. Purchasers must satisfy themselves by inspection or otherwise. Brochure by fourwalls-group.com. Brochure prepared and photographs taken September 2020.

