



Imposing Victorian semi detached house

2 Polstead Road, Central North Oxford, OX2 6TN

Freehold



4 reception rooms • kitchen • study • 9 bedrooms • 2 bath/shower rooms & cloakroom • detached annexe • parking • garden

Local information

2 Polstead Road lies in a sought after side road with good access to the city centre and the amenities of North Oxford and Summertown. Oxford mainline train station provides a regular service to London Paddington. Oxford Parkway provides a regular train service to London Marylebone. It is well located for the Oxford schools, and the open spaces of Port Meadow are also close by.

About this property

This imposing family house was built originally in the 1890's, and later significantly extended. It has been a comfortable family house for many years and now is ready for updating. With around 3573 sq ft in the main house, and with the addition of a detached annexe of 453 sq ft, the property provides a substantial home of generous proportions. The entrance hall leads to the two principal reception rooms, together with the kitchen and dining room. On the lower ground floor, the hallway leads to a family room, study, utility and cloakroom. With its own independent access at the side, it could be used as a self-contained annexe, subject to the necessary consents. There are three double bedrooms and a cloakroom on the first floor and, on the second floor, there are five further bedrooms, and a bathroom. The driveway provides parking, and there is side access to the rear. The mature walled rear garden is laid to lawn and interspersed with trees, flowers and shrubs. The detached annexe with sitting

room, kitchen, bedroom, shower room and cloakroom, lies to the rear and could be used as guest or ancillary accommodation or could also suit those wishing to work from home.

Historical Notes

2 Polstead Road was the family home of T E Lawrence ("Lawrence of Arabia"), the noted British archaeologist, military officer, diplomat, and writer, whose life was immortalised in the classic 1962 film 'Lawrence of Arabia' starring Peter O'Toole. The Lawrence family lived at 2 Polstead Road from 1896, and T E Lawrence himself lived there until 1921, and the bungalow built for him as an extrovert teenager still sits in the garden behind the house. Lawrence and his five brothers attended local schools and, from 1907-1910, he studied history at Jesus College. In 1918, after returning from war, Lawrence was elected a Fellow of All Souls College.

Photographs taken and details prepared August 2017.

Services

Mains services connected. Gas heating.

Tenure

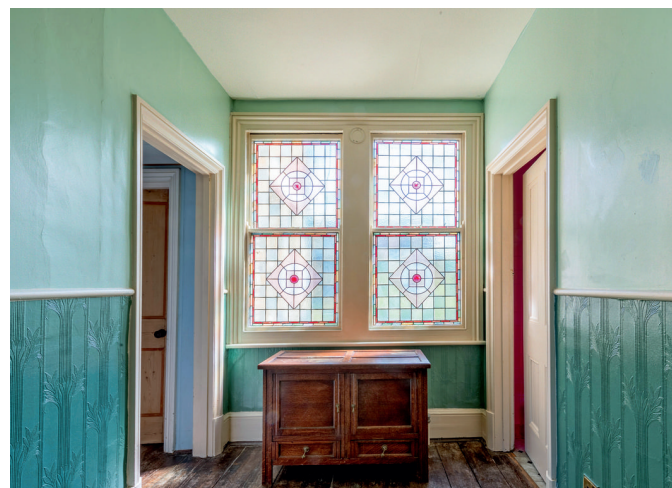
Freehold

Local Authority

Oxford City Council

Viewing

Strictly by appointment with Savills





2 Polstead Road, Central North Oxford, OX2 6TN

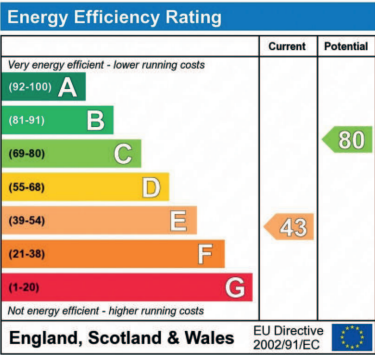
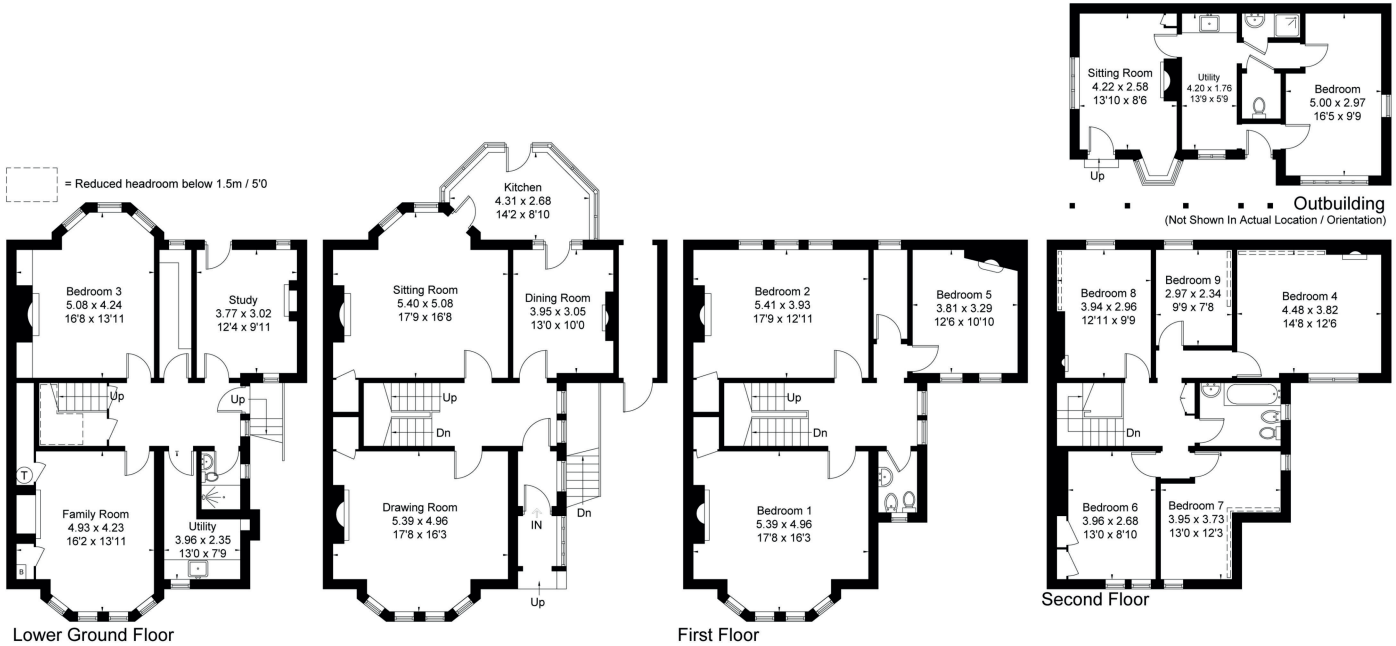


savills.co.uk

Savills Summertown, Oxford
01865 339700
summertown@savills.com

2 Polstead Road Oxford OX2 6TN

Gross Internal Area (approx) = 332.0 sq m / 3573 sq ft
Outbuilding = 42.1 sq m / 453 sq ft
Total = 374.1 sq m / 4026 sq ft
For identification only. Not to scale.
© Floorplanz Ltd



Important notice: Savills, their clients and any joint agents give notice that 1: They are not authorised to make or give any representations or warranties in relation to the property either here or elsewhere, either on their own behalf or on behalf of their client or otherwise. They assume no responsibility for any statement that may be made in these particulars. These particulars do not form part of any offer or contract and must not be relied upon as statements or representations of fact. 2: Any areas, measurements or distances are approximate. The text, photographs and plans are for guidance only and are not necessarily comprehensive. It should not be assumed that the property has all necessary planning, building regulation or other consents and Savills have not tested any services, equipment or facilities. Purchasers must satisfy themselves by inspection or otherwise. 02022040 Job ID: 140424 User initials: RVD/P

