



An elegant apartment of generous proportions set within this imposing Grade I listed Georgian mansion

The Waterhouse Suite, Brasted Place, High Street, Westerham, Kent, TN16 1JE

Guide price £900,000 - Share of Freehold



- Impressive first floor apartment
- Character features
- Balconies
- Far reaching views
- Communal gardens
- Garage

Local Information

Brasted Place occupies a delightful setting situated at the eastern end of the village of Brasted, with the White Hart Inn, many antique shops, a cafe and a general store.

Comprehensive Shopping:

Sevenoaks (4 miles) and

Westerham (1.5 miles).

Mainline Rail Services: Sevenoaks (3.7 miles) to London Bridge/Cannon Street/ Charing Cross.

Schools: There are many high regarded schools in the area both state and private.

Leisure Facilities: There are numerous public and private golf courses in the local area, and health centre and leisure pool complexes in both Oxted and Sevenoaks.

All distance are approximate.

About this property

The Waterhouse Suite is an impressive first floor apartment with elegant and well-proportioned accommodation. Features include attractive fireplaces, herringbone flooring, ceiling frieze, picture rails, and column radiators. Of particular note are the two balconies offering superb far reaching southerly views. There is also the benefit of about 6 acres of communal grounds.

- The apartment is approached via the grand communal entrance hall and stairway.
- The impressive drawing room has a fireplace and double doors to the balcony with wrought iron balustrade.
- The kitchen/dining room has an interesting mansard ceiling with

some exposed timbers, and panelling. There are full height windows incorporating double doors to the second balcony with a stone balustrade. The kitchen comprises a range of base and wall cupboards and matching island units together with a range of appliances.

- The bedroom accommodation comprises the principal bedroom with en suite bathroom, and two further bedrooms served by a further bathroom.

- Brasted Place is approached through electronically operated wrought iron gates which lead via a shared gravel driveway to two separate parking areas and a designated single garage.

- The delightful communal grounds are a superb feature comprising formal gardens and woodland, totalling approximately 6 acres.

History

The present Brasted Place mansion dates from 1784-5, having been designed by the celebrated architect Robert Adam for John Turton, physician to Queen Elizabeth I and later George III. Subsequent alterations and additions include notably the 1871 west-wing extension, designed by Alfred Waterhouse from whom this apartment gets its name. Brasted Place was Grade I listed in 1954. An award winning restoration and conversion was undertaken in the mid 1990s under the auspices of the English Heritage. This removed the 20th Century additions and created seven individual residential apartments.





The Waterhouse Suite, Brasted Place, High Street, Westerham, Kent, TN16 1JE
Gross Internal Area 1910 sq ft, 177.4 m²



savills

savills.co.uk

James Stacey-Clear

Sevenoaks

+44 (0) 1732 789 700

james.staceyclear@savills.com

Lease

Remainder of a 999 year lease from 1997 with a share of the freehold.

Maintenance charges - £3,391 paid in 2020 including maintenance of communal grounds and the Estate road, regular exterior redecoration and upkeep of common parts. Peppercorn ground rent.

Directions

From junction 5 of the M25 take the A21 and head west at the second turn off onto the A25 towards Westerham. Upon reaching the village of Brasted turn left before the White Hart Public House to the driveway marked Brasted Place. Continue through the electronic gates leading to Brasted Place.

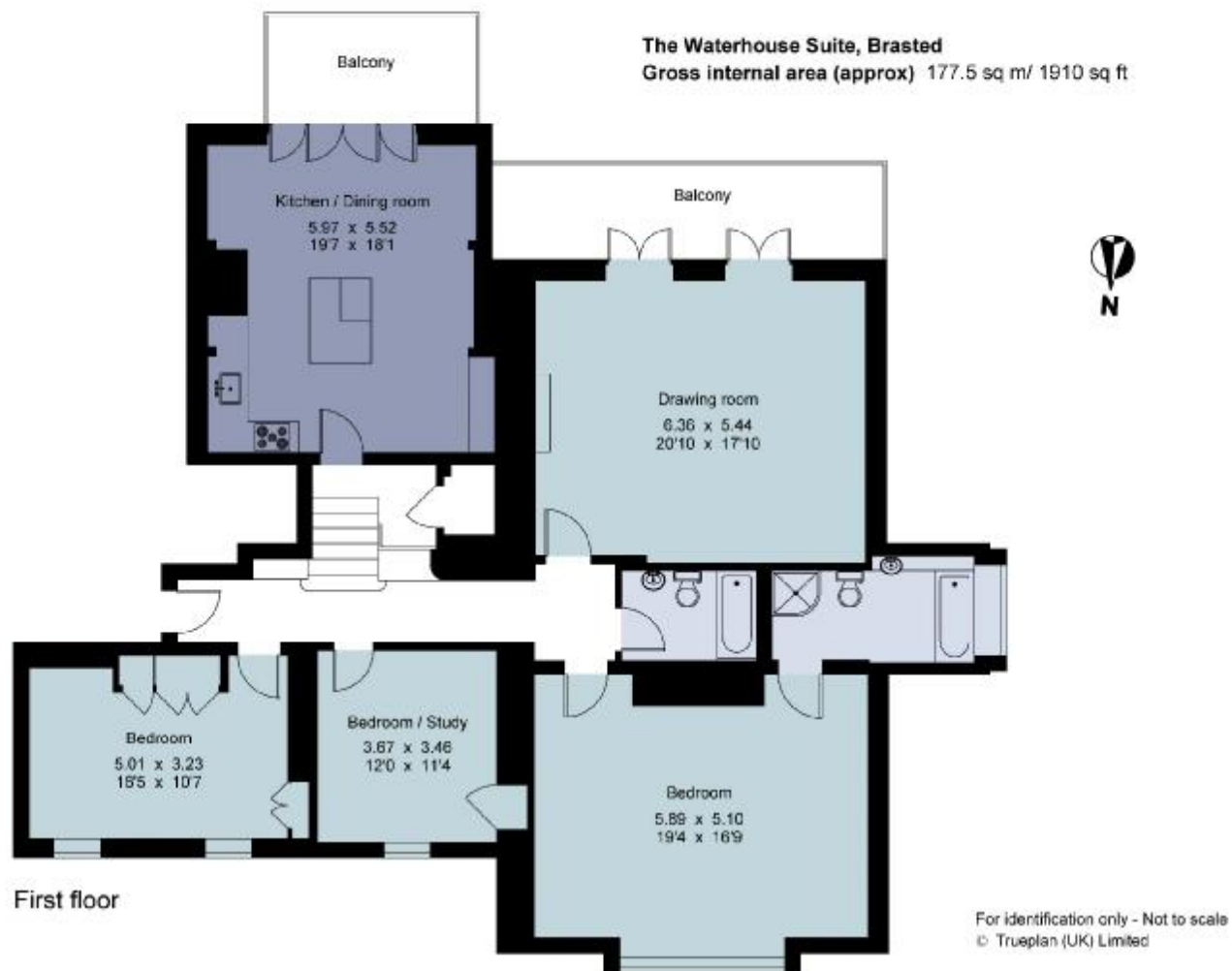
Local Authority

Sevenoaks District Council

Viewing

All viewings will be accompanied and are strictly by prior arrangement through Savills Sevenoaks Office.

Telephone: +44 (0) 1732 789 700.



Important Notice Savills, its clients and any joint agents give notice that 1: They are not authorised to make or give any representations or warranties in relation to the property either here or elsewhere, either on their own behalf or on behalf of their client or otherwise. They assume no responsibility for any statement that may be made in these particulars. These particulars do not form part of any offer or contract and must not be relied upon as statements or representations of fact. 2: Any areas, measurements or distances are approximate. The text, photographs and plans are for guidance only and are not necessarily comprehensive. It should not be assumed that the property has all necessary planning, building regulation or other consents and Savills have not tested any services, equipment or facilities. Purchasers must satisfy themselves by inspection or otherwise. 20200727ALBU

